



Universal Off-Line LED String Driver with PFC

ON Semiconductor

Device	Application	Input Voltage	Output Power	Topology	I/O Isolation
NCP1014 NSI45025	Off-line LED Driver With PFC	90 to 265 Vac	10 Watts (14W max)	Boost PFC + Constant Current Source	None

	Output 1
Output Voltage	400 Vdc
Ripple	< 10%
Nominal Current	25 mA
Max Current	35 mA
Min Current	10 mA

PFC (Yes/No)	Yes
Minimum Efficiency	80%
Inrush Limiting / Fuse	Yes
Operating Temp. Range	0 to +50°C
Cooling Method / Supply Orientation	Convection NA
Signal Level Control	No

Circuit Description

This Design Note describes an up to 10 watt, off-line universal input, LED string driver with power factor correction (PFC). It incorporates the NCP1014 “mini” boost power factor corrector circuit described in ON Semiconductor Design Note DN06064 in conjunction with ON Semiconductor’s new NSI45025 series constant current regulator. This latter device is a 2-pin part which can be inserted in series with a string of LEDs and provide a highly stable constant current and withstand a compliance voltage from 2 to 45 volts.

Assuming a typical output from the PFC of 400 Vdc, a string of 25 mA rated LEDs with a total series Vf of 375 volts can be powered with this circuit, and currents from 10 to 35 mA are possible with the use of other versions of this constant current regulator family. The 45 Vdc compliance voltage of the NSI45025 will easily compensate for LED Vf variations (binning differences) and temperature variation effects.

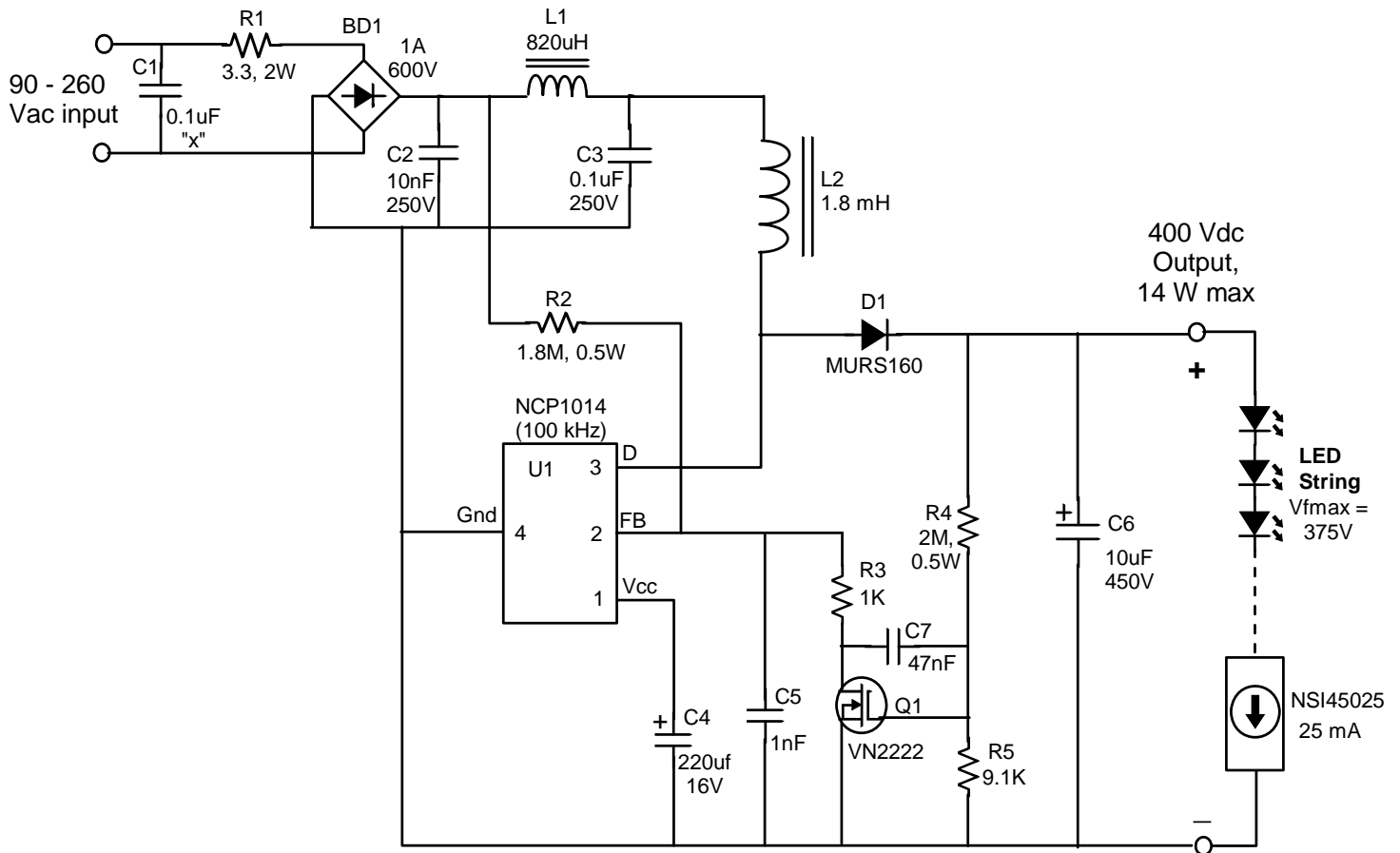
This LED driver design is ideal for new LED based replacement lamps for linear fluorescent lamps and other linear lighting application where a multitude of small LEDs are used to generate an area lighting source.

Key Features

- Power Factor (PF) better than 0.9 for agency compliance.
- Supports universal input range with a single design while achieving power factor correction.
- High tolerance to LED binning variations and temperature effects.
- Input EMI filter and in-rush limiting

DN06065/D

Schematic



Notes:

1. Crossed lines on schematic are not connected.
2. L1 is Coilcraft RFB0807-821L (820 uH, 320 mA)
3. L2 is Coilcraft RFB1010-182L (1.8 mH, 450 mA)
4. R5 sets Vout nominal

References:

- ON Semiconductor Design Note [DN06064](#): 12 Watt "Mini" Boost Power Factor Corrector for LED applications
- ON Semiconductor Design Note [DN06051](#): Improving the Power Factor of Isolated Flyback Converters for Residential ENERGY STAR® LED Luminaire Power Supplies
- Data sheet [NCP1014](#)
- Data sheet [NSI45025](#)

© 2009 ON Semiconductor.

Disclaimer: ON Semiconductor is providing this design note "AS IS" and does not assume any liability arising from its use; nor does ON Semiconductor convey any license to its or any third party's intellectual property rights. This document is provided only to assist customers in evaluation of the referenced circuit implementation and the recipient assumes all liability and risk associated with its use, including, but not limited to, compliance with all regulatory standards. ON Semiconductor may change any of its products at any time, without notice.

Design note created by Frank Cathell, e-mail: fcathell@onsemi.com