



ON Semiconductor

# Three LED 300 mA MR16 Driver

Device	Application	Input Voltage	Output Power	Topology	I/O Isolation
CAT4201	MR-16 LED Lamp	12 Vac	2.7 W	Step-down	No

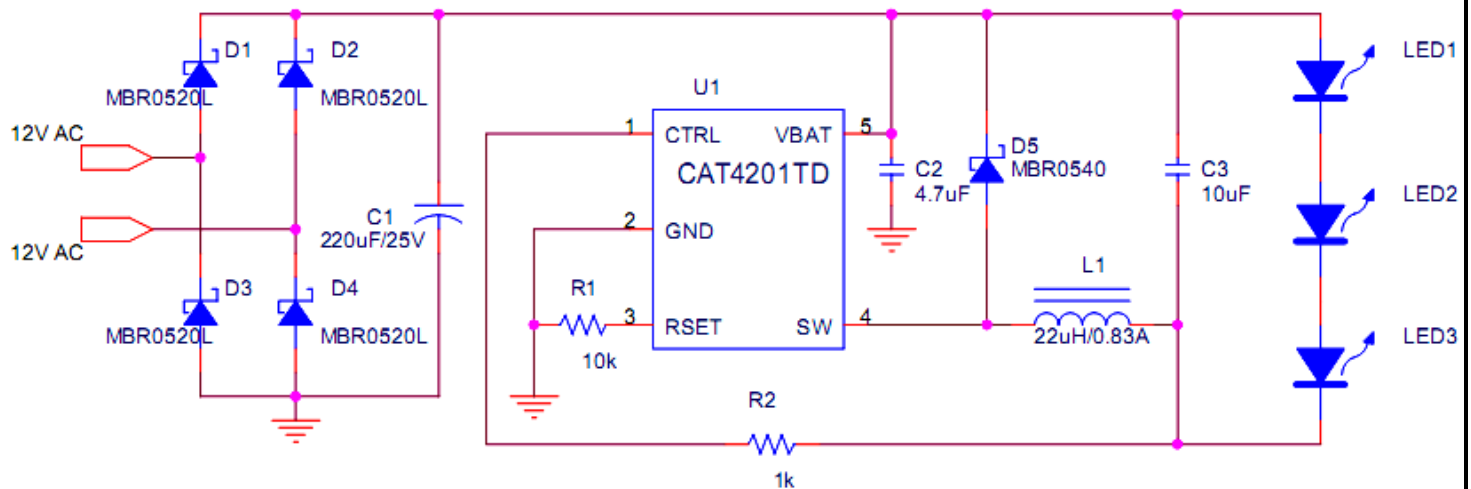
## Other Specification

	Output
Output Voltage	9.1V
Nominal Input Power	3.4 W
Nominal Average Current	300 mA
Max Average Current	310 mA
Min Average Current	295 mA
Typical Efficiency	83%

## LED Key Specifications

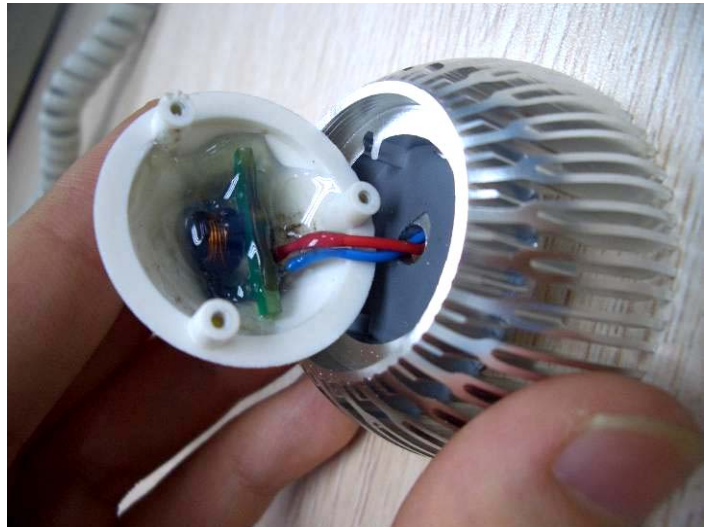
LED	Maximum Rating	Forward Voltage @ 350 mA	Typical Color	Typical Luminous Flux @ 350 mA
CREE Xlamp® XR-E	1 A / 3.7 W	3.3 V	Cool white	107 lm

## Circuit Description



The CAT4201 is a step-down, easy-to-configure, dimmable LED driver. The package is a 5-pin SOT-23; with fewer than 10 discrete components (most of them surface mount), the whole PCB can be small enough to fit into the base of an MR16 bulb. The voltage ratings on pins VBAT, CTRL and SW are 40 V, so driving 12 LEDs is possible with adequate voltage. The RSET pin determines the output DC current; CTRL is for dimming signal input. SW is the output of internal MOSFET. The CAT4201 driver is strongly recommended for its compact circuitry and high efficiency making it ideally suited for the replacement of filament-based bulb, in applications such as spot light.

## DN06067/D



**Figure 1: MR16 LED cases. Miniature LED driver board can be embedded into the base.**

### Theory of operation

The application circuit is a simple buck converter. In the case of AC applications, the input is rectified through a bridge rectifier. VBAT and GND are directly connected to the two terminals of the bulk capacitor C1 which reduces the current ripple. During the first switching phase, the internal MOSFET will charge the inductor with linearly rising current until the switching-off of MOSFET; during the second phase, the MOSFET is cut off, and the current stored in the inductor will discharge through the Schottky diode (D5), and the current decays till next period of switching. The output capacitor is used to reduce the current ripple in the LED. RSET is voltage regulated at 1.2 V, thus resistor connected to RSET determines the RSET current. The RSET current is approximately proportional to the output constant current of CAT4201.

### Circuit Configuration

VBAT has a voltage rating of -0.3 to +40 V, therefore an input voltage up to 24 Vac at the bridge is safe. A large C1 is necessary to keep a higher level of input voltage. Large fluctuation of rectified AC current will pull the output current to zero at double line frequency, thus reducing the output current. 220  $\mu$ F is adequate in this design. Voltage rating of C1 should be 25 V for 12 Vac input. MBR0520L was selected for the bridge rectifier because of its low forward voltage.

It is recommended to use at least 4.7  $\mu$ F for C2 as output capacitor to reduce output ripple. Larger C2 will effectively suppress the output ripple, and raise the output current by several milliamperes. However since its contribution to total efficiency is insignificant and that human eye cannot sense high-frequency fluctuation, capacitance larger than 10  $\mu$ F is not necessary. The value of L is recommended to be 22  $\mu$ H in order to set a proper switching frequency about 150 kHz. The LED current range is 0~350 mA, so the rms current rating of inductor around 800 mA is adequate.

The total continuous current though the rectifiers are always below 400 mA even though 350mA output current is supplied. Therefore a 0.5A continuous current rating is enough for rectifiers. Careful observation of voltage across the freewheeling D5 diode shows that voltage spikes over 20 V can be found even with 12 Vac input. A higher input voltage (such as 15 V) further stresses the diode, increasing the risk of failure. So the voltage rating on D5 should be 30 V or 40 V. ON semiconductor's Schottky rectifier MBR0540 was selected for D5.

## DN06067/D

RSET pin configures the value of the output current. RSET voltage is regulated at 1.2 V. Adding a resistor between RSET and GND determines the RSET current, which has an approximately linear relationship with output constant voltage:

$$I_{LED} = 2500 \cdot I_{RSET}$$

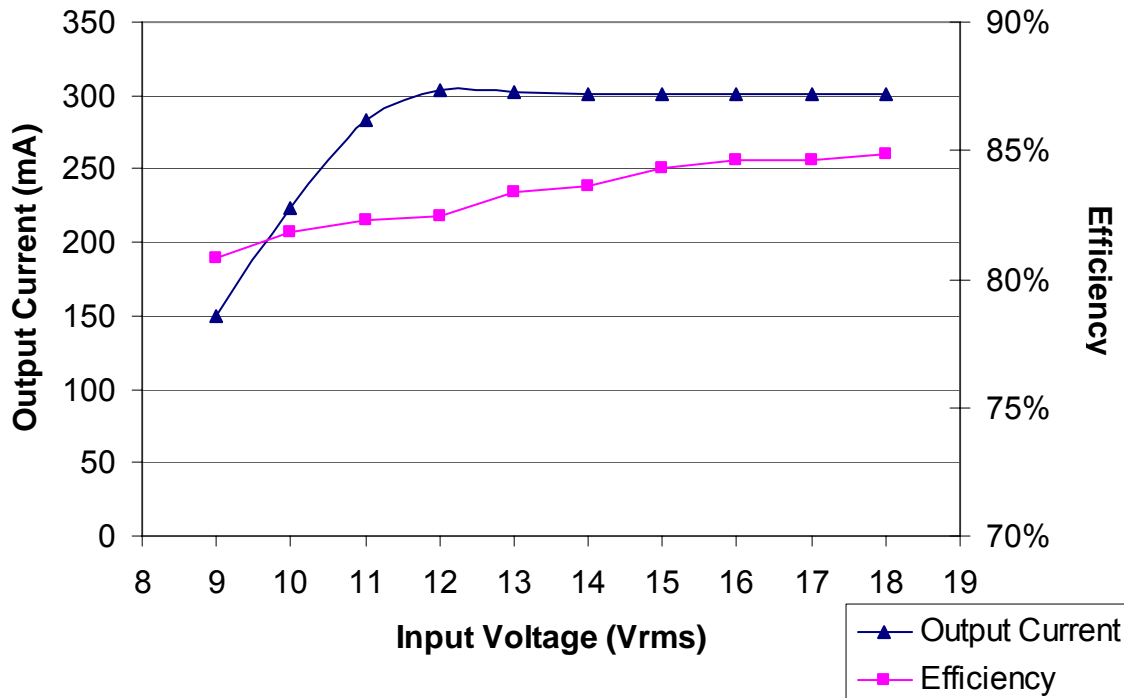
It can be calculated that for 300 mA output,  $I_{RSET}=0.12$  mA. The RSET resistor value should be 10 k $\Omega$ .

A smaller RSET resistance will possibly increase the output current, but it is recommended to use at least 8.0 k $\Omega$  for stable operation. If the input voltage is high enough (e.g. 15Vac), one can set  $R_{SET}$  to be 8.2k, which guarantees at least 350mA output.

CTRL derives voltage from the cathode of LED through R2. Value of R2 is not critical.

### Performance and Characteristics

#### 1. Input voltage - output current - efficiency relationship\*

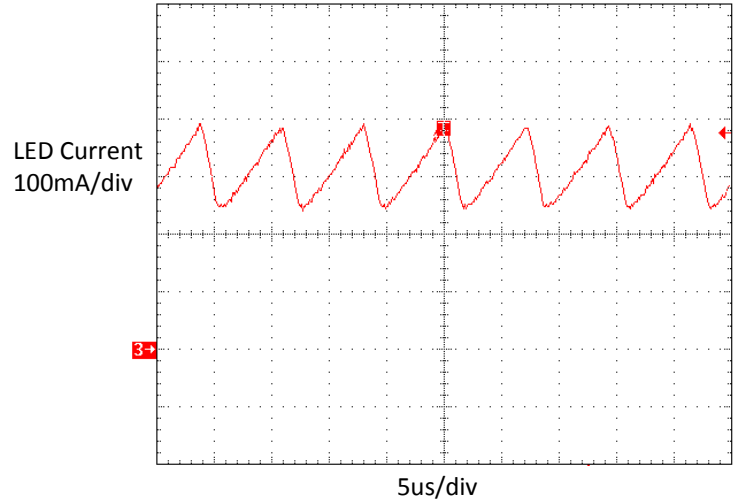
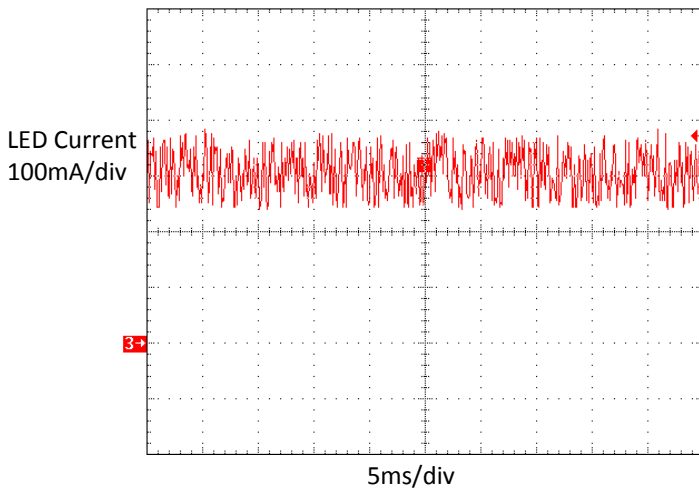


\* Equipment: Global Specialties 1506 AC isolated variable AC line supply; Voltech PM1000 AC Power analyzer; Tektronix TDS754D digital phosphor oscilloscope; Tektronix TCP202 current probe; Agilent 34401A multimeter.

# DN06067/D

## 2. LED Current waveforms\*

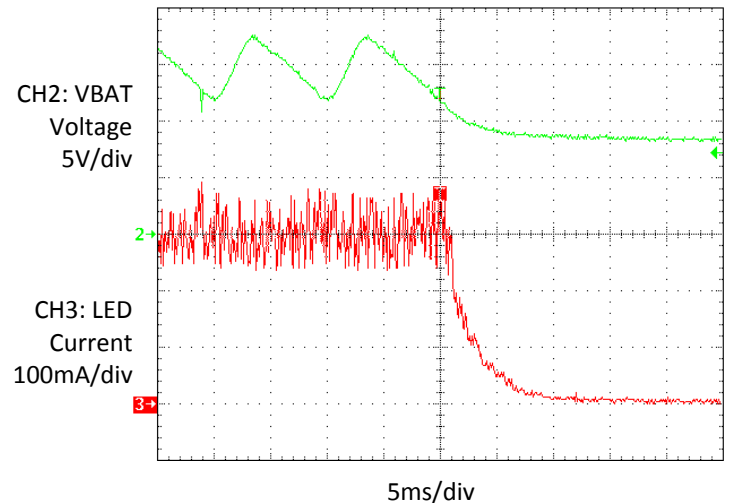
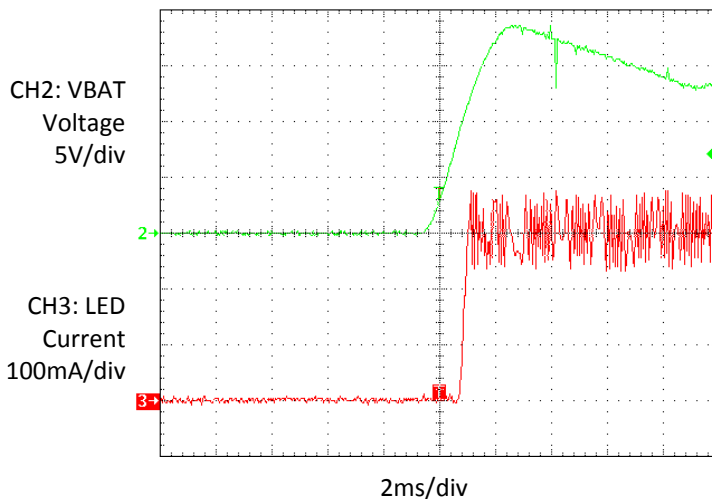
$V_{in}$ =12 Vac 50Hz, circuit is configured according to the schematic in page 1 of this document.



The LED current has got very slight low frequency (at twice the AC frequency, 2 x 50Hz here) fluctuation due to the AC line input. Using larger C1 or higher  $V_{in}$  will further flatten the AC related ripple current.

## 3. Startup and power down transient\*

$V_{in}$ =12 Vac 50Hz, circuit is configured according to the schematic in page 1 of this document.



\* Equipment: Global Specialties 1506 AC isolated variable AC line supply; Voltech PM1000 AC Power analyzer; Tektronix TDS754D digital phosphor oscilloscope; Tektronix TCP202 current probe.

# DN06067/D

## Bill of Material

Part	Specifications and Ratings	Manufacturer
CAT4201TD	SOT-23; 40V; 350mA;	ON Semiconductor
MBR0520L	0.5 A, 20 V SMT Schottky Rectifier; Vf=0.38 V	ON Semiconductor
MBR0540	0.5 A, 40 V SMT Schottky Rectifier; Vf=0.51 V	ON Semiconductor
LEDs	CREE Xlamp 7090 XR-E, cool white, group Q5	CREE
L1	22 $\mu$ H, 0.9 A, 0.83 A ( $I_{sat.}$ ) shielded 4x4x1.8mm (LPS4018-223)	Coilcraft
C1	220 $\mu$ F, 25 V	Panasonic
C2	4.7 $\mu$ F, 25 V 1206 Ceramic	TDK
C3	10 $\mu$ ,F 16 V Ceramic	TDK
R1	10k 1/8 W SMT-0805, 1%	-
R2	1k 1/8 W SMT-0805, 5%	-

## References

- Data sheet [CAT4201](#): 350 mA High Efficiency Step Down LED Driver
- Data sheet [MBR0520L](#): 0.5 A, 20 V Schottky Rectifier
- Data sheet [MBR0540](#): 0.5 A, 40 V Schottky Rectifier

## Conclusion

The information presented in this design note covers the various factors required about designing a three-LED MR-16 lamp using the CAT4201. The CAT4201 allows smaller footprint, fewer components for a MR-16 compatible adapter.

Reducing capacitor and inductor values, or removing the CTRL resistor is possible for further reduction of the cost and PCB size. Using a small bulk capacitor will lead to large drop of average output current, which is not recommended, but suitable for applications with less brightness (200~250mA). Selecting high-quality LEDs with smaller forward voltage is very important in this design to achieve a higher output current.

© 2009 ON Semiconductor.

**Disclaimer:** ON Semiconductor is providing this design note "AS IS" and does not assume any liability arising from its use; nor does ON Semiconductor convey any license to its or any third party's intellectual property rights. This document is provided only to assist customers in evaluation of the referenced circuit implementation and the recipient assumes all liability and risk associated with its use, including, but not limited to, compliance with all regulatory standards. ON Semiconductor may change any of its products at any time, without notice.

Design note created by Preston Zhu and Tim Wang, email: [preston.zhu@onsemi.com](mailto:preston.zhu@onsemi.com)