

ON

ON Semiconductor

MATRIXCAM

IoT Video Development Kit

What is it?

A **smart**, low **power**, 1080P video **streaming** device

Store data on **SD card** or the **Cloud**

Connect with

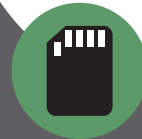
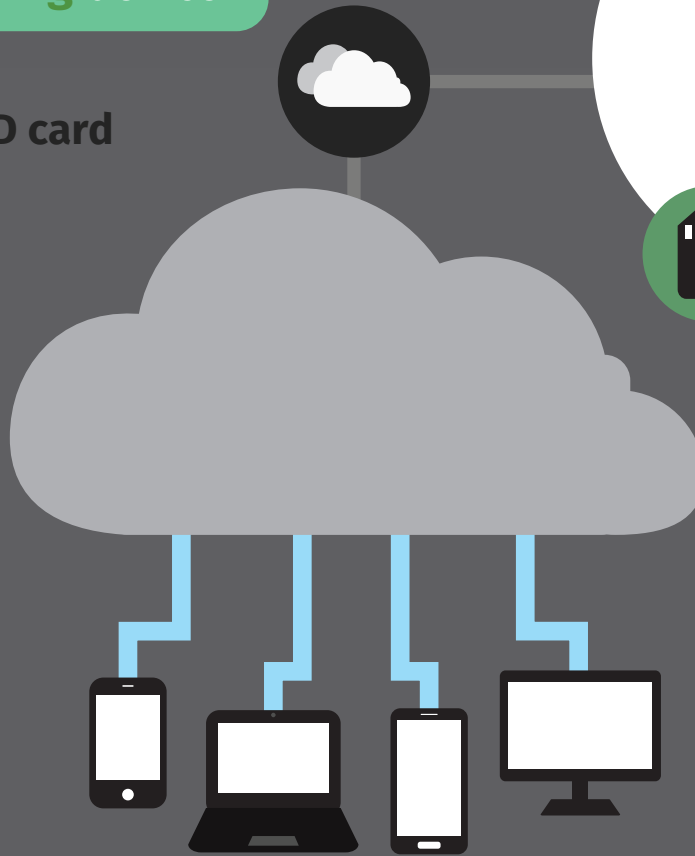
Wi-Fi



Ethernet

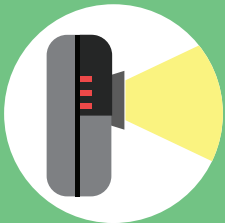


Bluetooth



Open Source code on GitHub

Stream **live** to your devices



Top Quality Sensors

- Outstanding low light performance
- Dynamic range capture
- PIR motion detection



Cloud Integration

- Cloud Recording
- Push notifications
- Take snapshots



Built-In API

- Configuration (FPS, video options)
- Embedded web and streaming server



Ease of Use

- Open source firmware
- Quick to market
- Easy to productize