



Is Now Part of



ON Semiconductor®

To learn more about ON Semiconductor, please visit our website at
www.onsemi.com

ON Semiconductor and the ON Semiconductor logo are trademarks of Semiconductor Components Industries, LLC dba ON Semiconductor or its subsidiaries in the United States and/or other countries. ON Semiconductor owns the rights to a number of patents, trademarks, copyrights, trade secrets, and other intellectual property. A listing of ON Semiconductor's product/patent coverage may be accessed at www.onsemi.com/site/pdf/Patent-Marking.pdf. ON Semiconductor reserves the right to make changes without further notice to any products herein. ON Semiconductor makes no warranty, representation or guarantee regarding the suitability of its products for any particular purpose, nor does ON Semiconductor assume any liability arising out of the application or use of any product or circuit, and specifically disclaims any and all liability, including without limitation special, consequential or incidental damages. Buyer is responsible for its products and applications using ON Semiconductor products, including compliance with all laws, regulations and safety requirements or standards, regardless of any support or applications information provided by ON Semiconductor. "Typical" parameters which may be provided in ON Semiconductor data sheets and/or specifications can and do vary in different applications and actual performance may vary over time. All operating parameters, including "Typicals" must be validated for each customer application by customer's technical experts. ON Semiconductor does not convey any license under its patent rights nor the rights of others. ON Semiconductor products are not designed, intended, or authorized for use as a critical component in life support systems or any FDA Class 3 medical devices or medical devices with a same or similar classification in a foreign jurisdiction or any devices intended for implantation in the human body. Should Buyer purchase or use ON Semiconductor products for any such unintended or unauthorized application, Buyer shall indemnify and hold ON Semiconductor and its officers, employees, subsidiaries, affiliates, and distributors harmless against all claims, costs, damages, and expenses, and reasonable attorney fees arising out of, directly or indirectly, any claim of personal injury or death associated with such unintended or unauthorized use, even if such claim alleges that ON Semiconductor was negligent regarding the design or manufacture of the part. ON Semiconductor is an Equal Opportunity/Affirmative Action Employer. This literature is subject to all applicable copyright laws and is not for resale in any manner.

AN-9759

Fairchild GreenBridge™ Solution to Replace Conventional Diode Bridge in Power Over Ethernet Applications

Summary

A Power Device (PD) in a Power over Ethernet (PoE) application requires a bridge circuit to regulate the polarity of the input power when the Power Source Equipment (PSE) supplying power to the PD is equipped with an Uninterruptible Power Supply (UPS). The simple diode bridge design has been used without major concerns at low cost. However, as PD gets hungrier for power, the conduction loss of the diode bridge caused by the forward-voltage drop becomes one of the main issues to be solved efficiently. Fairchild's GreenBridge™ solution reduces power losses in the bridge circuit and leads to an efficient and cost-effective PoE system. In this application note, the GreenBridge drive circuit is examined and test results with a typical diode bridge are presented.

Power Over Ethernet

Power over Ethernet (PoE) introduces a new facet to Ethernet networking, delivering DC power through a CAT5 network cable. Figure 1 shows a typical PoE system. It is convenient to install PDs; such as IP telephones, wireless LAN access points, and security cameras; without any wall power lines because the CAT5 cable delivers data as well as power required by those PDs. In addition, the PoE system is energy efficient because the PSE communicates to the PD first and provides regulated power PD for demands. The power management block of PD must be designed carefully to operate efficiently at limited input power from the PSE.

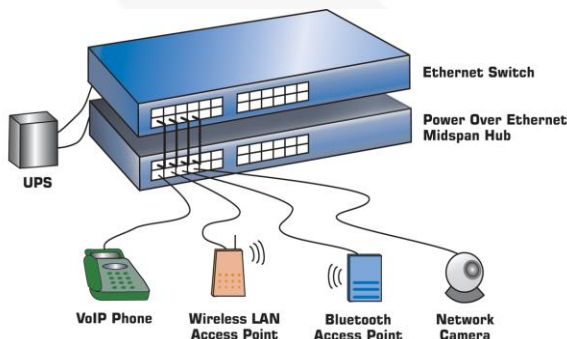


Figure 1. Typical PoE System

The IEEE802.3af/3at standard defines the power class for PD as described in Table 1.

Table 1. IEEE802.3af/3at PoE Classification

PD Class	Maximum PD Power
0	0.5 to 13 W
1	0.5 to 3.84 W
2	3.84 to 6.49 W
3	6.49 to 13 W
4	13 to 25 W

GreenBridge™ Solution

To improve the conduction loss and efficiency of the conventional diode bridge, Fairchild Semiconductor integrates dual P-channel and dual N-channel MOSFETs in a compact and thermally enhanced package. Table 2 the GreenBridge FDMQ8203 electrical parameters.

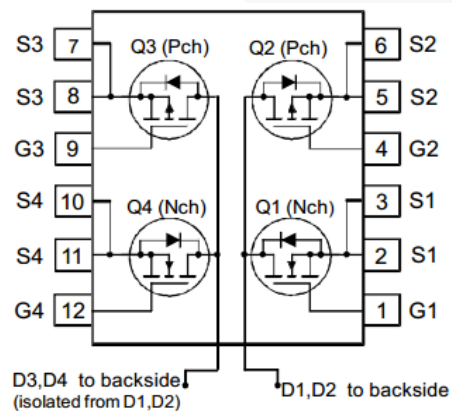


Figure 2. Configuration and Pin Map

Table 2. GreenBridge™ FDMQ8203 Parameters

Part No.	MOSFET	BV _{DSS} (V)	R _{DS(ON)} [mΩ]	Q _g [nC]	Θ _{JA} [°C/W]
			Max.	Typ.	
FSMQ8203	Q1, Q4	100	110	2.9	50
	Q2, Q3	-80	190	13	

The package plays a critical role in power supply performance. The thermally enhanced MLP 4.5 x 5 mm package shown in Figure 3 is able to increase power density and save PCB space.

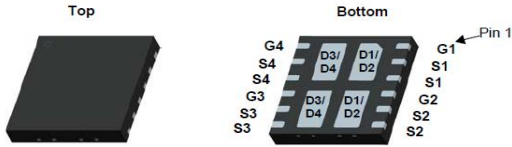


Figure 3. MLP 4.5 x 5 mm Package

A bridge circuit in the PD regulates power polarity from the PSE so all power loss is conduction loss. Replacing the diode bridge with the GreenBridge™ device, shown in Figure 4, reduces conduction loss to improve PD efficiency.

As current flow is turned on, the current flows through the corresponding P- or N-channel MOSFET of the GreenBridge device. As a result, the $R_{DS(on)}$ of GreenBridge solution reduces the conduction loss when compared to a diode bridge from the forward voltage, V_F .

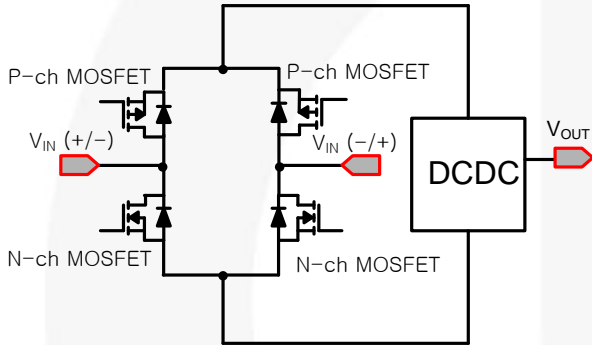


Figure 4. GreenBridge™ Solution

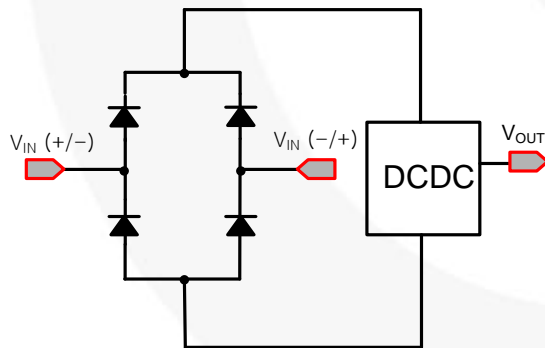


Figure 5. Conventional Diode Bridge in PD

GreenBridge power loss is calculated by:

$$=I^2 \times R_{DS(ON)} - Pch + I^2 \times R_{DS(ON)} - Nch \quad (1)$$

Diode bridge power loss is calculated by:

$$=2 \times V_F \times I \quad (2)$$

The self-driven gate circuit for GreenBridge FDMQ8203 is configured as illustrated in Figure 6, which consists of transistors, diodes, Zener diodes, and resistors.

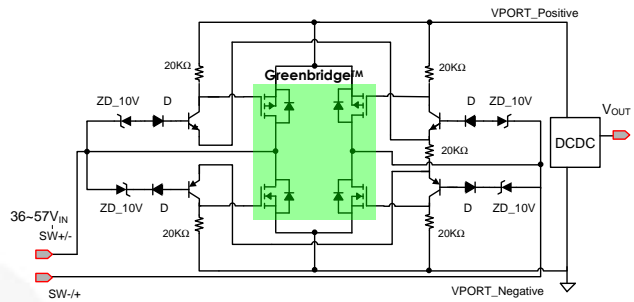


Figure 6. Self-Driven Gate Drive Circuit

Figure 6 shows the current flow from SW+ to SW-. Q1 and Q4 in the GreenBridge device turn on, while Q2 and Q3 are off. Red lines indicate the power flow path and green lines express the bias current of the self-driven gate circuit. Zener diodes limit the gate-to-source voltage of the GreenBridge device, not to exceed BV_{GSS} . The gate voltage of Q1 and Q4 are defined as:

$$V_{gs_Q1} = \text{Zener Voltage}_{10V} + V_{F_D} \quad (3)$$

$$V_{gs_Q4} = \text{Zener Voltage}_{10V} + V_{F_D} \quad (4)$$

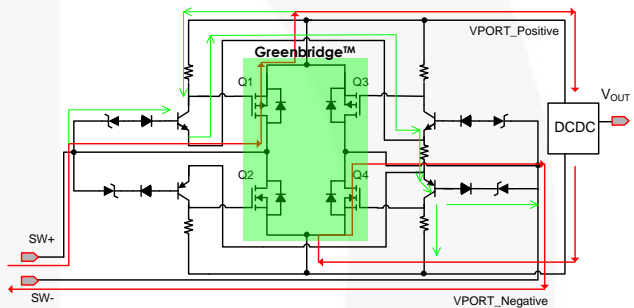


Figure 7. Current Flows of GreenBridge Device at SW+ and SW-

When PD is plugged into the PSE, the PSE recognizes the presence of the PD by checking the current through a 25 kΩ (± 1.3 kΩ) resistor on the PD. It is the resistance detection process of the PoE standard. The PSE provides two consecutive voltages, $V1=2.7$ V and $V2=10.1$ V, shown in Figure 7, to the PD for the resistance detection mode and records measured current values, $I1$ and $I2$ by $V1$ and $V2$, respectively. The computed $\Delta V / \Delta I$ by the PSE ensures the presence of a PD and the PSE moves on to identify the PD power class. During this step, the GreenBridge device should not compromise the resistance detection procedure by bypassing the current through the body diode. The recommended gate drive circuit in Figure 6 helps the GreenBridge device stay turned off and bypasses the current via body diode at 2.7 V and 10.1V from the PSE. Without the safe gate drive circuit, the GreenBridge device can turn on at the 10.1 V input given by the PSE during the resistance detection because the MOSFETs of the GreenBridge device have a 4 V maximum threshold voltage. This could cause resistance detection to fail.

Below is how the PSE calculates in this scenario:

- $I_1 = (2.7\text{ V} - 1.4\text{ V}) / 25\text{ k}\Omega = 0.052\text{ mA}$ GreenBridge device turns off at 2.7 V. Current flows through body diode, causing body diode voltage drop ($2 \times 0.7\text{ V}$).
- $I_2 = 10.1\text{ V} / 25\text{ k}\Omega = 0.404\text{ mA}$
- GreenBridge device turns on at 10.1 V. Current flows through the channel of GreenBridge device.
- Measured $\Delta V / \Delta I = (10.1\text{ V} - 2.7\text{ V}) / (0.404\text{ mA} - 0.052\text{ mA}) = 21.02\text{ k}\Omega$
- The measured $\Delta V / \Delta I$ does not meet the $25\text{ k}\Omega$ ($\pm 1.3\text{ k}\Omega$) standard.

After the resistance detection process, the input voltage from the PSE increases more than twice (Zener voltage $_{10\text{V}} + V_{F,D}$) and the GreenBridge device turns on completely. The current begins flowing through the conduction channel of the GreenBridge device.

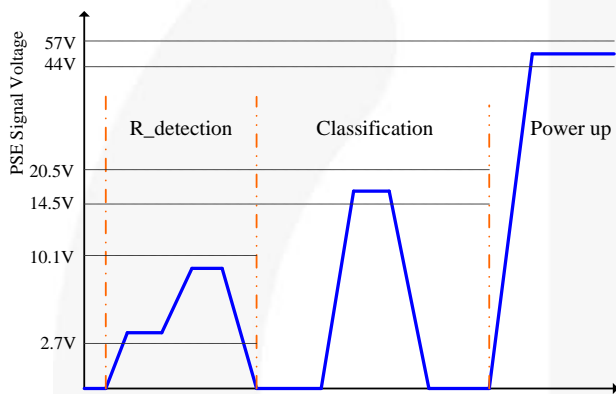


Figure 8. Signal at Initial Operation

GreenBridge™ Performance

The 25 W PD power block is designed as listed in Table 3 for the test between the GreenBridge FDMQ8203 and the conventional Schottky diode bridge with S210 (100 V/2 A).

Table 3. PD Power Design Specification

PoE Class	Class 4
IEEE Standard	IEEE802.3at
DCDC Topology	Flyback
Input Voltage	36V ~ 57V
Output Voltage	5V
Maximum Output Current	5A
Output Power	25W
Switching Frequency	250KHz

At 25 W maximum output power and 36 V minimum input voltage, the estimated input current is 0.7 A through the GreenBridge solution or diode bridge. Based on equations [1] and [2], the computed power loss gap between the GreenBridge solution and the diode bridge is 0.83 W. ($R_{DS(on)_Pch} = 190\text{ m}\Omega$, $R_{DS(on)_Nch} = 110\text{ m}\Omega$, typical diode $V_F = 0.7\text{ V}$):

- GreenBridge power loss is calculated by:
 $= 0.7\text{ A} \times 0.7\text{ A} \times 110\text{ m}\Omega + 0.7\text{ A} \times 0.7\text{ A} \times 190\text{ m}\Omega = 0.147\text{ W}$
- Diode bridge power loss is calculated by:
 $= 0.7\text{ V} \times 0.7\text{ A} \times 2 = 0.98\text{ W}$

Figure 9 shows that the GreenBridge™ FDMQ8203 improves the efficiency by 2.41% and saves the total power loss by 0.82 W compared to diode bridge at 25 W maximum output power and 36 V minimum input voltage conditions.

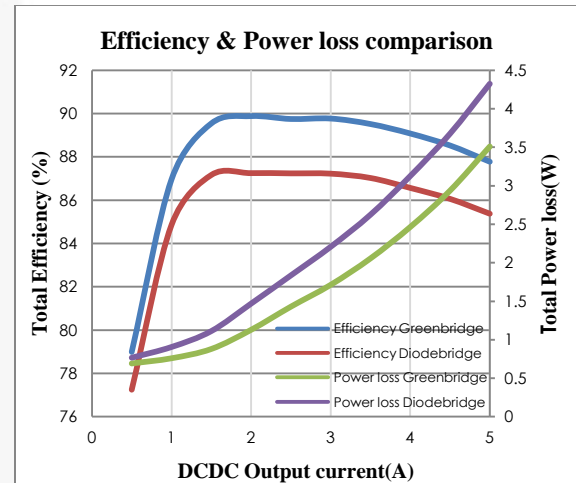
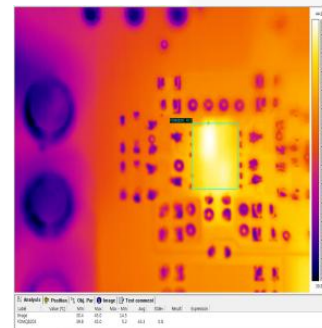
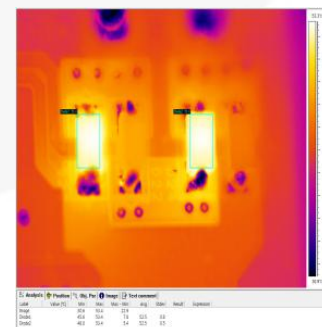


Figure 9. Efficiency & Power Loss Comparison of GreenBridge™ Solution and Diode Bridge at $V_{IN} = 36\text{ V}$, $V_{OUT} = 5\text{ V}$, $f_{SW} = 250\text{ kHz}$, $T_A = 25^\circ\text{C}$



Top View, Temperature: 45°C

Figure 10. Thermal Performance Comparison of GreenBridge™ Solution and Diode Bridge at $V_{IN} = 36\text{ V}$, $V_{OUT} = 5\text{ V}$, $f_{SW} = 250\text{ kHz}$, $T_A = 25^\circ\text{C}$



Diode Bridge Top View, Temperature: 53.4°C

Figure 11. Thermal Performance Comparison of GreenBridge™ Solution and Diode Bridge at $V_{IN} = 36\text{ V}$, $V_{OUT} = 5\text{ V}$, $f_{SW} = 250\text{ kHz}$, $T_A = 25^\circ\text{C}$

Figure 10 and Figure 11 show the thermal performance of the GreenBridge solution at lower temperature because of the lower thermal impedance of the MLP 4x4.5 mm package and lower power loss even though the GreenBridge package size is 45% smaller.

Table 4. Comparison Summary

	GreenBridge™	Diode Bridge
Power Loss	Good (0.82 W ↓)	Bad
Thermal	Good (8.4°C ↓)	Bad
Solution Size	Good (45% ↓) 48.74 mm ² (FDMQ8203: 22.5 mm ² Gate circuits: 26.24 mm ²)	Bad 88.48 mm ²
Complexity	Complex	Simple

Finally, Table 4 shows that the GreenBridge™ solution saves power loss and PCB area.

Authors

SungJin Kuen – LV Applications Engineer

Edgar Kim – LV Applications Engineer

References

[1] *GreenBridge™ Evaluation Kit for Power over Ethernet 25 W Flyback DC-DC User Guide*

Related Resources

[FDMQ8203 — GreenBridge™ Series of High-Efficiency Bridge Rectifiers Dual N-Channel and Dual P-Channel PowerTrench® MOSFET N-Channel: 100 V, 6 A, 110mΩ P-Channel: -80V, -6 A, 190mΩ](#)

DISCLAIMER

FAIRCHILD SEMICONDUCTOR RESERVES THE RIGHT TO MAKE CHANGES WITHOUT FURTHER NOTICE TO ANY PRODUCTS HEREIN TO IMPROVE RELIABILITY, FUNCTION, OR DESIGN. FAIRCHILD DOES NOT ASSUME ANY LIABILITY ARISING OUT OF THE APPLICATION OR USE OF ANY PRODUCT OR CIRCUIT DESCRIBED HEREIN; NEITHER DOES IT CONVEY ANY LICENSE UNDER ITS PATENT RIGHTS, NOR THE RIGHTS OF OTHERS.

LIFE SUPPORT POLICY

FAIRCHILD'S PRODUCTS ARE NOT AUTHORIZED FOR USE AS CRITICAL COMPONENTS IN LIFE SUPPORT DEVICES OR SYSTEMS WITHOUT THE EXPRESS WRITTEN APPROVAL OF THE PRESIDENT OF FAIRCHILD SEMICONDUCTOR CORPORATION.

As used herein:

1. Life support devices or systems are devices or systems which, (a) are intended for surgical implant into the body, or (b) support or sustain life, or (c) whose failure to perform when properly used in accordance with instructions for use provided in the labeling, can be reasonably expected to result in significant injury to the user.
2. A critical component is any component of a life support device or system whose failure to perform can be reasonably expected to cause the failure of the life support device or system, or to affect its safety or effectiveness.

Conclusion

In a PoE application, the PSE delivers the limited power defined by PoE power class. The PD should be designed carefully to maximize the efficiency. Using Fairchild's GreenBridge™ solution instead of the conventional diode bridge reduces power loss and increases the power density. This results in lower PD class rating and saved PCB area. An efficient and cost-effective PoE system can be achieved with Fairchild's innovative GreenBridge solution.

ON Semiconductor and  are trademarks of Semiconductor Components Industries, LLC dba ON Semiconductor or its subsidiaries in the United States and/or other countries. ON Semiconductor owns the rights to a number of patents, trademarks, copyrights, trade secrets, and other intellectual property. A listing of ON Semiconductor's product/patent coverage may be accessed at www.onsemi.com/site/pdf/Patent-Marking.pdf. ON Semiconductor reserves the right to make changes without further notice to any products herein. ON Semiconductor makes no warranty, representation or guarantee regarding the suitability of its products for any particular purpose, nor does ON Semiconductor assume any liability arising out of the application or use of any product or circuit, and specifically disclaims any and all liability, including without limitation special, consequential or incidental damages. Buyer is responsible for its products and applications using ON Semiconductor products, including compliance with all laws, regulations and safety requirements or standards, regardless of any support or applications information provided by ON Semiconductor. "Typical" parameters which may be provided in ON Semiconductor data sheets and/or specifications can and do vary in different applications and actual performance may vary over time. All operating parameters, including "Typicals" must be validated for each customer application by customer's technical experts. ON Semiconductor does not convey any license under its patent rights nor the rights of others. ON Semiconductor products are not designed, intended, or authorized for use as a critical component in life support systems or any FDA Class 3 medical devices or medical devices with a same or similar classification in a foreign jurisdiction or any devices intended for implantation in the human body. Should Buyer purchase or use ON Semiconductor products for any such unintended or unauthorized application, Buyer shall indemnify and hold ON Semiconductor and its officers, employees, subsidiaries, affiliates, and distributors harmless against all claims, costs, damages, and expenses, and reasonable attorney fees arising out of, directly or indirectly, any claim of personal injury or death associated with such unintended or unauthorized use, even if such claim alleges that ON Semiconductor was negligent regarding the design or manufacture of the part. ON Semiconductor is an Equal Opportunity/Affirmative Action Employer. This literature is subject to all applicable copyright laws and is not for resale in any manner.

PUBLICATION ORDERING INFORMATION

LITERATURE FULFILLMENT:

Literature Distribution Center for ON Semiconductor
19521 E. 32nd Pkwy, Aurora, Colorado 80011 USA
Phone: 303-675-2175 or 800-344-3860 Toll Free USA/Canada
Fax: 303-675-2176 or 800-344-3867 Toll Free USA/Canada
Email: orderlit@onsemi.com

N. American Technical Support: 800-282-9855 Toll Free
USA/Canada
Europe, Middle East and Africa Technical Support:
Phone: 421 33 790 2910
Japan Customer Focus Center
Phone: 81-3-5817-1050

ON Semiconductor Website: www.onsemi.com
Order Literature: <http://www.onsemi.com/orderlit>
For additional information, please contact your local
Sales Representative