

# Automotive 1200 V, 450 A Dual Side Cooling Half-Bridge Power Module VE-Trac™ Dual NVG450A120L5DSC



AHPM15-CEA  
CASE 100DD

## Product Description

The NVG450A120L5DSC is a member of the VE-Trac Dual power module family with dual side cooling and compact footprints for Hybrid (HEV) and Electric Vehicle (EV) traction inverter application.

The module consists of two latest 1200 V Ultra Field Stop (UFS) IGBTs in a half-bridge configuration. The chipset utilizes the proven Trench Ultra Field Stop IGBT technology in providing high current density while offering robust short circuit protection and increased blocking voltage. Additionally, UFS IGBT and copacked soft diode deliver a low power loss operation and soft switching simultaneously, which helps to improve overall system efficiency in HEV/EV traction applications.

## Features

- Dual-Side Cooling
- Integrated Chip Level Temperature & Current Sensor
- $T_{vj\ max} = 175^{\circ}C$
- Low Stray Inductance
- Low Conduction and Switching Losses
- Automotive Grade
- 4.2 kV Isolated DBC Substrate
- This is a Pb-Free Device

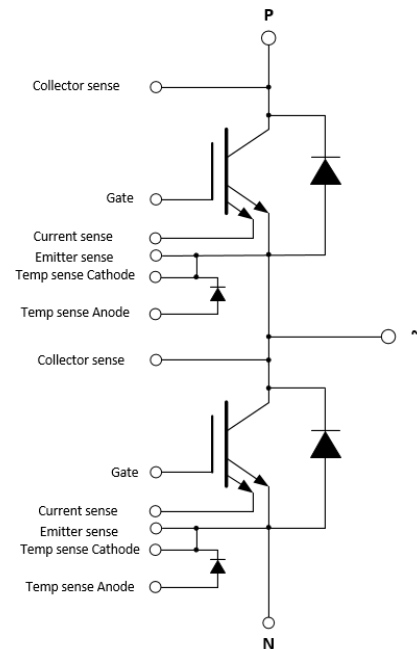
## Typical Applications

- Hybrid and Electric Vehicle Traction Inverter
- High Power DC-DC Converter

## MARKING DIAGRAM



ZZZ = Assembly Lot Code  
AT = Assembly & Test Site Code  
Y = Year  
WW = Work Week  
XXXX = Specific Device Code  
NNN = Serial Number



## ORDERING INFORMATION

See detailed ordering and shipping information on page 9 of this data sheet.

# VE-Trac™ Dual NVG450A120L5DSC

## PIN DESCRIPTION

Pin No.	Pin	Description	Pin Arrangement
1	N	Low Side Emitter	
2	P	High Side Collector	
3	H/S COLLECTOR SENSE	High Side Collector Sense	
4	H/S CURRENT SENSE	High Side Current Sense	
5	H/S EMITTER SENSE	High Side Emitter Sense	
6	H/S GATE	High Side Gate	
7	H/S TEMP SENSE (CATHODE)	High Side Temp sense Diode Cathode	
8	H/S TEMP SENSE (ANODE)	High Side Temp sense Diode Anode	
9	~	Phase Output	
10	L/S CURRENT SENSE	Low Side Current Sense	
11	L/S EMITTER SENSE	Low Side Emitter Sense	
12	L/S GATE	Low Side Gate	
13	L/S TEMP SENSE (CATHODE)	Low Side Temp sense Diode Cathode	
14	L/S TEMP SENSE (ANODE)	Low Side Temp sense Diode Anode	
15	L/S COLLECTOR SENSE	Low Side Collector Sense	

## DBC Substrate

Al<sub>2</sub>O<sub>3</sub> isolated substrate, basic isolation, and copper on both sides

## Lead frame

Copper, with tin electro-plating

## Flammability Information

All Power Module packaging materials meet UL flammability rating class 94V-0

## MODULE CHARACTERISTICS

Symbol	Parameter	Rating	Unit		
T <sub>vj</sub>	Continuous Operating Junction Temperature Range	-40 to 150	°C		
T <sub>vj,op</sub>	Continuous Operating Junction Temperature Under Switching Conditions	-40 to 175	°C		
T <sub>STG</sub>	Storage Temperature Range	-40 to 125	°C		
V <sub>ISO</sub>	Isolation Voltage, AC, f = 50 Hz, t = 1 s	4200	V		
Creepage	Terminal to Heatsink Terminal to Terminal	6.0	mm		
Clearance	Terminal to Heatsink Terminal to Terminal	3.2	mm		
CTI	Comparative Tracking Index	>600			
		<b>Min.</b>	<b>Typ.</b>	<b>Max.</b>	
L <sub>sCE</sub>	Stray Inductance	-	-	8	nH
R <sub>CC'+EE'</sub>	Module Lead Resistance, Terminals - Chip	-	-	0.15	mΩ
G	Module Weight	-	-	72	g
M	M4 Screws for Module Terminals	-	-	2.2	Nm

# VE-Trac™ Dual NVG450A120L5DSC

## ABSOLUTE MAXIMUM RATINGS ( $T_{Vj} = 25^{\circ}\text{C}$ , unless otherwise specified)

Symbol	Parameter	Rating	Unit
<b>IGBT</b>			
$V_{CES}$	Collector to Emitter Voltage	1200	V
$V_{GES}$	Gate to Emitter Voltage	-15/+20	V
$V_{GES\ transient}$	Gate to Emitter Voltage, Limits under switching conditions	$\pm 20$	V
$I_{CN}$	Implemented Collector Current	450	A
$I_{C\ nom}$	Continuous DC Collector Current, $T_{vjmax} = 175^{\circ}\text{C}$ , $T_F = 65^{\circ}\text{C}$ , Ref. Heatsink	410 (Note 1)	A
$I_{CRM}$	Pulsed Collector Current @ $V_{GE} = 15\text{ V}$ , $t_p = 1\text{ ms}$	900	A

## DIODE

$V_{RRM}$	Repetitive Peak Reverse Voltage	1200	V
$I_{FN}$	Implemented Forward Current	450	A
$I_F$	Continuous Forward Current, $T_{vjmax} = 175^{\circ}\text{C}$ , $T_F = 65^{\circ}\text{C}$ , Ref. Heatsink	360 (Note 1)	A
$I_{FRM}$	Repetitive Peak Forward Current, $t_p = 1\text{ ms}$	900	A
$I^2t$ value	$V_R = 0\text{ V}$ , $t_p = 10\text{ ms}$ , $T_{Vj} = 150^{\circ}\text{C}$ $T_{Vj} = 175^{\circ}\text{C}$	14400 12960	$\text{A}^2\text{s}$

Stresses exceeding those listed in the Maximum Ratings table may damage the device. If any of these limits are exceeded, device functionality should not be assumed, damage may occur and reliability may be affected.

1. Verified by characterization, not test.

## THERMAL CHARACTERISTICS (Verified by characterization, not test)

Symbol	Parameter	Min.	Typ.	Max.	Unit
IGBT. $R_{th,J-C}$	Effective $R_{th}$ , Junction to Case (Note 2)	-	0.06	0.08	$^{\circ}\text{C}/\text{W}$
IGBT. $R_{th,J-F}$	Effective $R_{th}$ , Junction to Fluid, $\lambda_{TIM} = 6\text{ W/m-K}$ , $F = 660\text{ N}$ 10 L/min, $65^{\circ}\text{C}$ , 50/50 EGW, Ref. Heatsink	-	0.15	-	$^{\circ}\text{C}/\text{W}$
Diode. $R_{th,J-C}$	Effective $R_{th}$ , Junction to Case (Note 2)	-	0.08	0.10	$^{\circ}\text{C}/\text{W}$
Diode. $R_{th,J-F}$	Effective $R_{th}$ , Junction to Fluid, $\lambda_{TIM} = 6\text{ W/m-K}$ , $F = 660\text{ N}$ 10 L/min, $65^{\circ}\text{C}$ , 50/50 EGW, Ref. Heatsink	-	0.21	-	$^{\circ}\text{C}/\text{W}$

2. For the measurement point of case temperature ( $T_c$ ), DBC discoloration, picker circle print is allowed, please refer to the VE-Trac Dual assembly guide for additional details about acceptable DBC surface finish.

# VE-Trac™ Dual NVG450A120L5DSC

## CHARACTERISTICS OF IGBT ( $T_{vj} = 25^{\circ}\text{C}$ , unless otherwise specified)

Parameters		Conditions	Min	Typ	Max	unit
$V_{CESAT}$	Collector to Emitter Saturation Voltage (Terminal)	$V_{GE} = 15\text{ V}$ , $I_C = 300\text{ A}$ , $T_{vj} = 25^{\circ}\text{C}$	–	1.38	1.6	V
		$T_{vj} = 150^{\circ}\text{C}$	–	1.50	–	
		$T_{vj} = 175^{\circ}\text{C}$	–	1.53	–	
		$V_{GE} = 15\text{ V}$ , $I_C = 450\text{ A}$ , $T_{vj} = 25^{\circ}\text{C}$	–	1.59	–	
		$T_{vj} = 150^{\circ}\text{C}$	–	1.82	–	
		$T_{vj} = 175^{\circ}\text{C}$	–	1.87	–	
$I_{CES}$	Collector to Emitter Leakage Current	$V_{GE} = 0\text{ V}$ , $V_{CE} = 1200\text{ V}$ , $T_{vj} = 25^{\circ}\text{C}$	–	–	1	mA
		$T_{vj} = 175^{\circ}\text{C}$	–	7	–	
$I_{GES}$	Gate – Emitter Leakage Current	$V_{CE} = 0\text{ V}$ , $V_{GE} = +20\text{ V}/-15\text{ V}$	–	–	$\pm 400$	nA
$V_{th}$	Threshold Voltage	$V_{CE} = V_{GE}$ , $I_C = 500\text{ mA}$	5.8	6.8	7.6	V
$Q_G$	Total Gate Charge	$V_{GE} = -8\text{ to }15\text{ V}$ , $V_{CE} = 600\text{ V}$	–	1.45	–	$\mu\text{C}$
$R_{Gint}$	Internal Gate Resistance		–	0	–	$\Omega$
$C_{ies}$	Input Capacitance	$V_{CE} = 30\text{ V}$ , $V_{GE} = 0\text{ V}$ , $f = 1\text{ MHz}$	–	61	–	nF
$C_{oes}$	Output Capacitance	$V_{CE} = 30\text{ V}$ , $V_{GE} = 0\text{ V}$ , $f = 1\text{ MHz}$	–	1.5	–	nF
$C_{res}$	Reverse Transfer Capacitance	$V_{CE} = 30\text{ V}$ , $V_{GE} = 0\text{ V}$ , $f = 1\text{ MHz}$	–	0.7	–	nF
$T_{d,on}$	Turn On Delay, Inductive Load	$I_C = 300\text{ A}$ , $V_{CE} = 600\text{ V}$ , $V_{GE} = +15/-8\text{ V}$ , $R_{g,on} = 3\ \Omega$ , $T_{vj} = 25^{\circ}\text{C}$	–	128	–	ns
		$T_{vj} = 150^{\circ}\text{C}$	–	121	–	
		$T_{vj} = 175^{\circ}\text{C}$	–	118	–	
$T_r$	Rise Time, Inductive Load	$I_C = 300\text{ A}$ , $V_{CE} = 600\text{ V}$ , $V_{GE} = +15/-8\text{ V}$ , $R_{g,on} = 3\ \Omega$ , $T_{vj} = 25^{\circ}\text{C}$	–	59	–	ns
		$T_{vj} = 150^{\circ}\text{C}$	–	66	–	
		$T_{vj} = 175^{\circ}\text{C}$	–	68	–	
$T_{d,off}$	Turn Off Delay, Inductive Load	$I_C = 300\text{ A}$ , $V_{CE} = 600\text{ V}$ , $V_{GE} = +15/-8\text{ V}$ , $R_{g,off} = 5\ \Omega$ , $T_{vj} = 25^{\circ}\text{C}$	–	1070	–	ns
		$T_{vj} = 150^{\circ}\text{C}$	–	1132	–	
		$T_{vj} = 175^{\circ}\text{C}$	–	1157	–	
$T_f$	Fall Time, Inductive Load	$I_C = 300\text{ A}$ , $V_{CE} = 600\text{ V}$ , $V_{GE} = +15/-8\text{ V}$ , $R_{g,off} = 5\ \Omega$ , $T_{vj} = 25^{\circ}\text{C}$	–	103	–	ns
		$T_{vj} = 150^{\circ}\text{C}$	–	250	–	
		$T_{vj} = 175^{\circ}\text{C}$	–	281	–	
$E_{ON}$	Turn-On Switching Loss (Including Diode Reverse Recovery Loss)	$I_C = 300\text{ A}$ , $V_{CE} = 600\text{ V}$ , $V_{GE} = +15/-8\text{ V}$ , $R_{g,on} = 3\ \Omega$ , $T_{vj} = 25^{\circ}\text{C}$	–	18	–	mJ
		$T_{vj} = 150^{\circ}\text{C}$	–	28	–	
		$T_{vj} = 175^{\circ}\text{C}$	–	30	–	
		$L_s = 25\text{ nH}$ $di/dt (T_{vj}=25^{\circ}\text{C}) = 4.06\text{ A/ns}$ $di/dt (T_{vj}=175^{\circ}\text{C}) = 3.95\text{ A/ns}$				
$E_{OFF}$	Turn-Off Switching Loss	$I_C = 300\text{ A}$ , $V_{CE} = 600\text{ V}$ , $V_{GE} = +15/-8\text{ V}$ , $R_{g,off} = 5\ \Omega$ , $T_{vj} = 25^{\circ}\text{C}$	–	19	–	mJ
		$T_{vj} = 150^{\circ}\text{C}$	–	34	–	
		$T_{vj} = 175^{\circ}\text{C}$	–	37	–	
		$L_s = 25\text{ nH}$ $dv/dt (T_{vj}=25^{\circ}\text{C}) = 4.15\text{ V/ns}$ $dv/dt (T_{vj}=175^{\circ}\text{C}) = 3.21\text{ V/ns}$				
Esc	Minimum Short Circuit Energy Withstand	$V_{GE} = 15\text{ V}$ , $V_{CC} = 600\text{ V}$ , $T_{vj} = 25^{\circ}\text{C}$	16	–	–	J
		$T_{vj} = 175^{\circ}\text{C}$	8.8	–	–	

# VE-Trac™ Dual NVG450A120L5DSC

## CHARACTERISTICS OF INVERSE DIODE (T<sub>vj</sub> = 25°C, unless otherwise specified)

Parameters		Conditions	Min	Typ	Max	unit	
V <sub>F</sub>	Diode Forward Voltage (Terminal)	V <sub>GE</sub> = 0 V, I <sub>C</sub> = 300 A,	T <sub>vj</sub> = 25°C	–	1.58	1.82	V
			T <sub>vj</sub> = 150°C	–	1.56	–	
			T <sub>vj</sub> = 175°C	–	1.54	–	
		V <sub>GE</sub> = 0 V, I <sub>C</sub> = 450 A,	T <sub>vj</sub> = 25°C	–	1.80	–	
			T <sub>vj</sub> = 150°C	–	1.81	–	
			T <sub>vj</sub> = 175°C	–	1.78	–	
E <sub>rr</sub>	Reverse Recovery Energy	V <sub>R</sub> = 600 V, I <sub>F</sub> = 300 A, R <sub>GON</sub> = 3 Ω, –di/dt = 3.95 A/ns (175°C) V <sub>GE</sub> = –8 V	T <sub>vj</sub> = 25°C	–	10	–	mJ
			T <sub>vj</sub> = 150°C	–	22	–	
			T <sub>vj</sub> = 175°C	–	24	–	
				–	–	–	
Q <sub>RR</sub>	Recovered Charge	V <sub>R</sub> = 600 V, I <sub>F</sub> = 300 A, R <sub>GON</sub> = 3 Ω, –di/dt = 3.95 A/ns (175°C) V <sub>GE</sub> = –8 V	T <sub>vj</sub> = 25°C	–	25	–	μC
			T <sub>vj</sub> = 150°C	–	53	–	
			T <sub>vj</sub> = 175°C	–	59	–	
				–	–	–	
I <sub>rr</sub>	Peak Reverse Recovery Current	V <sub>R</sub> = 600 V, I <sub>F</sub> = 300 A, R <sub>GON</sub> = 3 Ω, –di/dt = 3.95 A/ns (175°C) V <sub>GE</sub> = –8 V	T <sub>vj</sub> = 25°C	–	250	–	A
			T <sub>vj</sub> = 150°C	–	332	–	
			T <sub>vj</sub> = 175°C	–	343	–	
				–	–	–	

## SENSOR CHARACTERISTICS (T<sub>vj</sub> = 25°C, unless otherwise specified)

Parameters		Conditions	Min	Typ	Max	unit		
T <sub>sense</sub>	Temperature Sense	I <sub>F</sub> = 250 μA,	T <sub>vj</sub> = –40°C	–	3.40	–	V	
			T <sub>vj</sub> = 25°C	2.95	3.01	3.086		
				(Note 3)	–	(Note 3)		–
			T <sub>vj</sub> = 150°C	–	2.27	–		
I <sub>sense</sub>	Current Sense	R <sub>shunt</sub> = 10 Ω,	I <sub>C</sub> = 600 A	–	392	–	mV	
			I <sub>C</sub> = 300 A	–	254	–		
			I <sub>C</sub> = 200 A	–	209	–		
		R <sub>shunt</sub> = 20 Ω,	I <sub>C</sub> = 600 A	–	566	–		
			I <sub>C</sub> = 300 A	–	377	–		
			I <sub>C</sub> = 200 A	–	314	–		

3. Measured at final test.

# VE-Trac™ Dual NVG450A120L5DSC

## TYPICAL CHARACTERISTICS

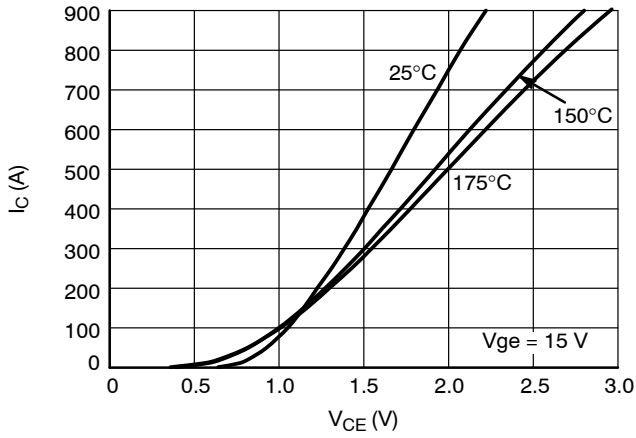


Figure 1. IGBT Output Characteristic

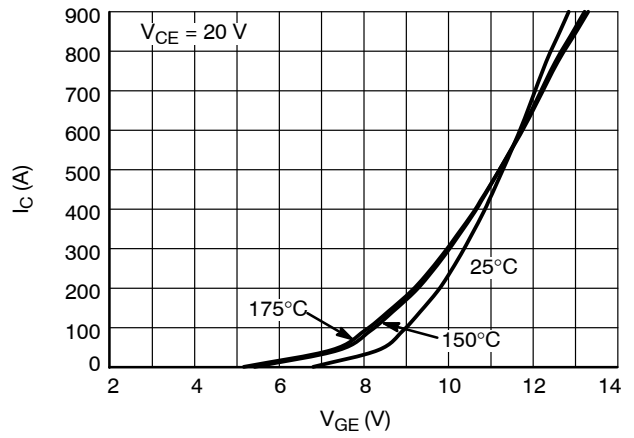


Figure 2. IGBT Transfer Characteristic

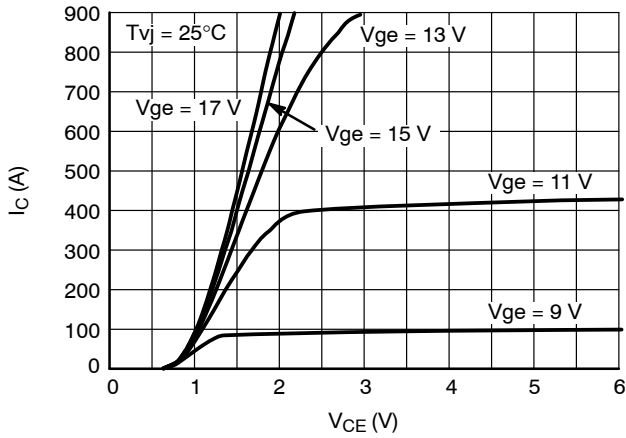


Figure 3. IGBT Output Characteristic

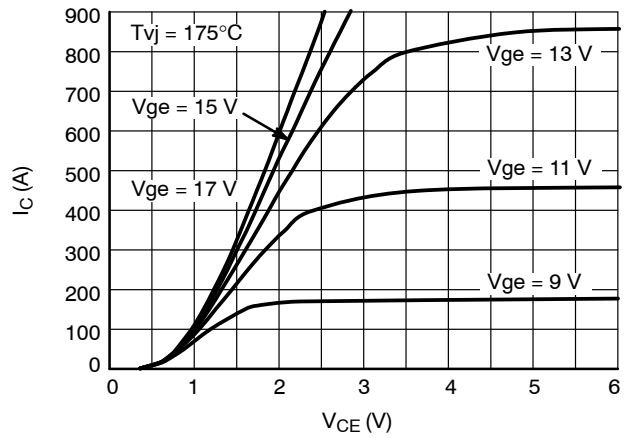


Figure 4. IGBT Output Characteristic

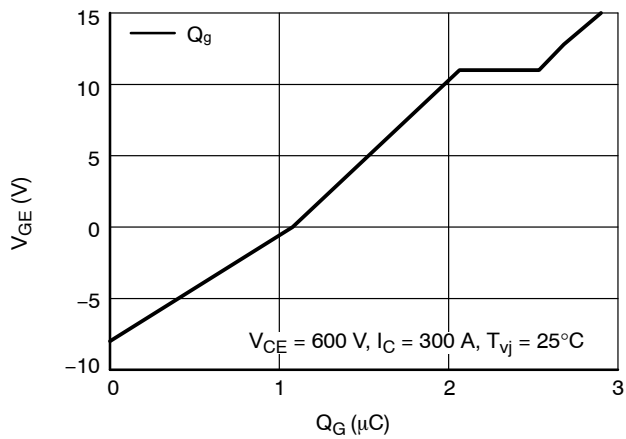


Figure 5. Gate Charge Characteristic

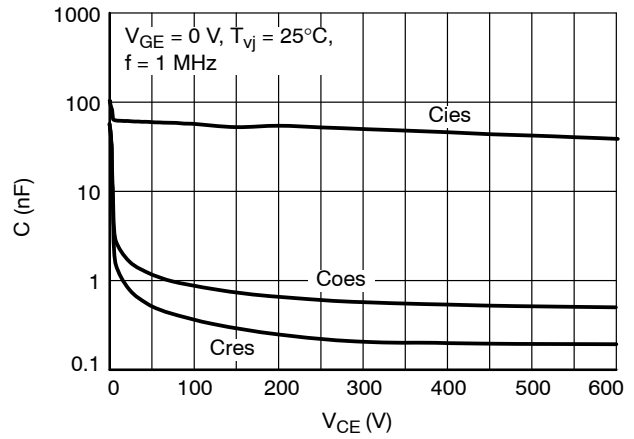


Figure 6. Capacitance Characteristic

# VE-Trac™ Dual NVG450A120L5DSC

## TYPICAL CHARACTERISTICS

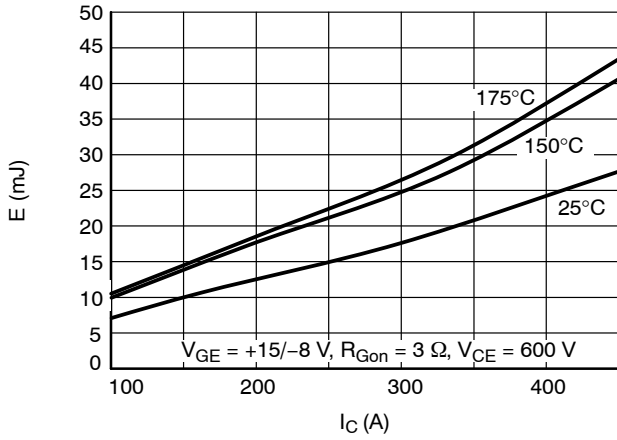


Figure 7. IGBT Turn-on Losses vs.  $I_C$

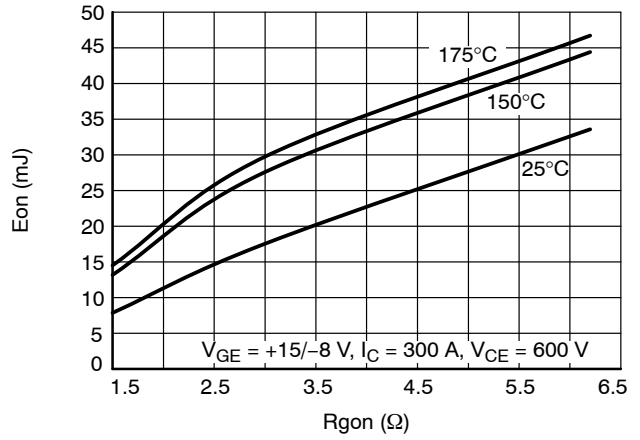


Figure 8. IGBT Turn-on Losses vs.  $R_{gon}$

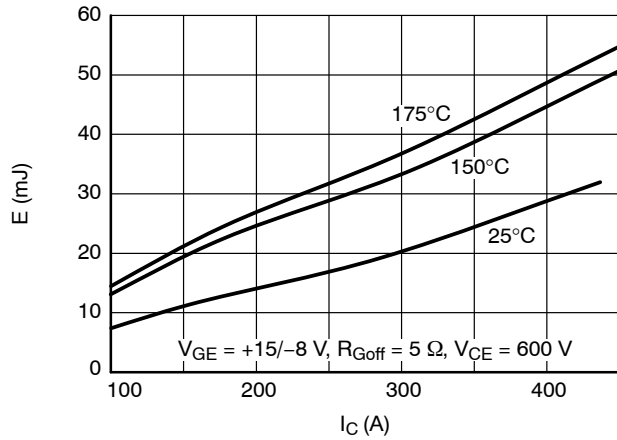


Figure 9. IGBT Turn-off Losses vs.  $I_C$

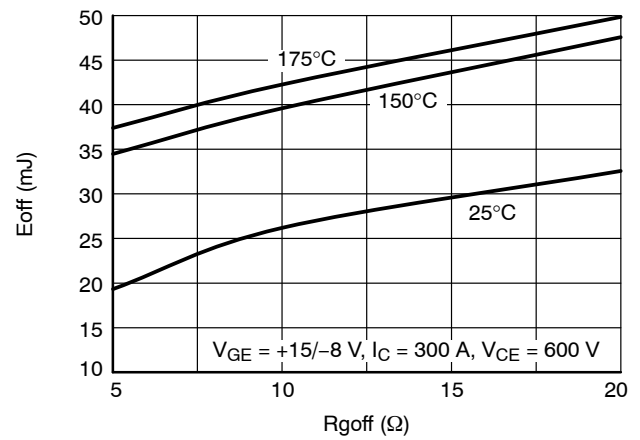


Figure 10. IGBT Turn-off Losses vs.  $R_{goff}$

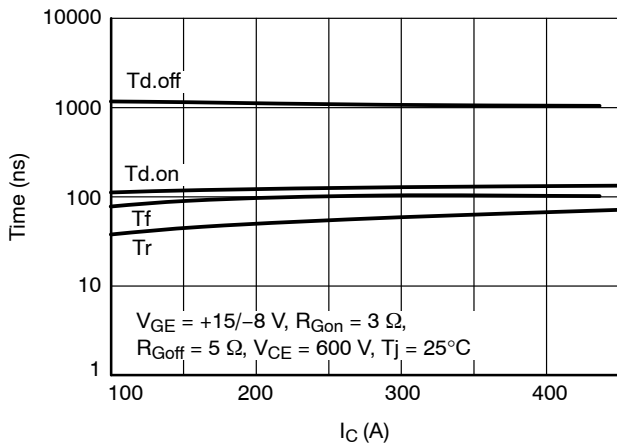


Figure 11. IGBT Switching Times vs.  $I_C$ ,  $T_{vj} = 25^\circ\text{C}$

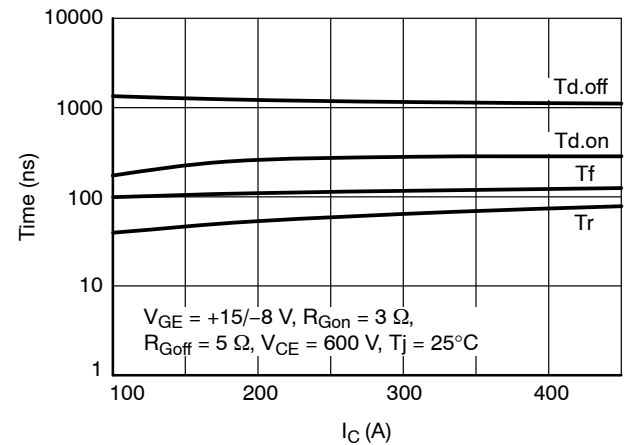


Figure 12. IGBT Switching Times vs.  $I_C$ ,  $T_{vj} = 175^\circ\text{C}$

TYPICAL CHARACTERISTICS

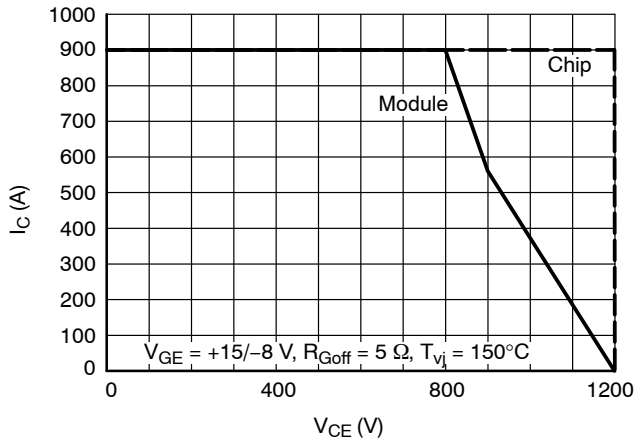


Figure 13. Reverse Bias Safe Operating Area

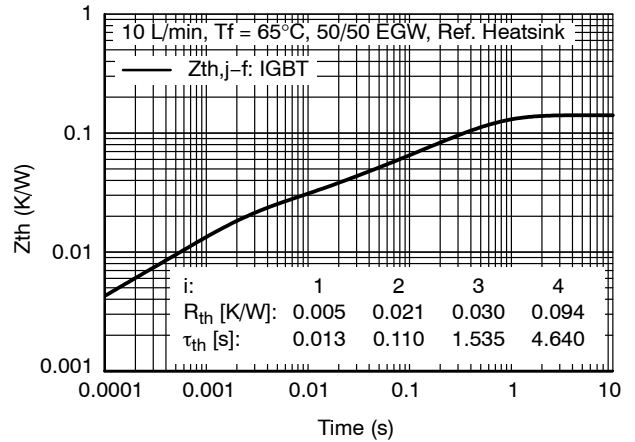


Figure 14. IGBT Transient Thermal Impedance

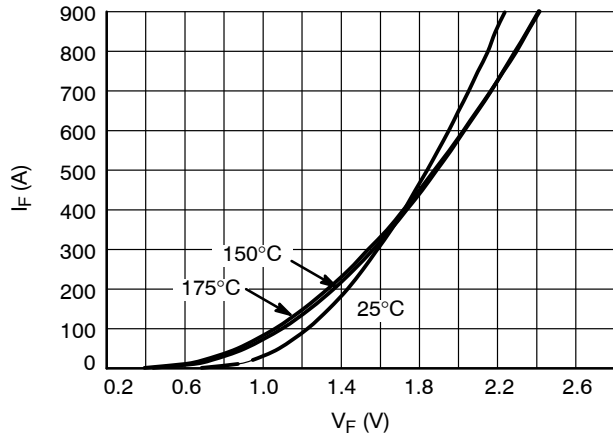


Figure 15. Diode Forward Characteristics

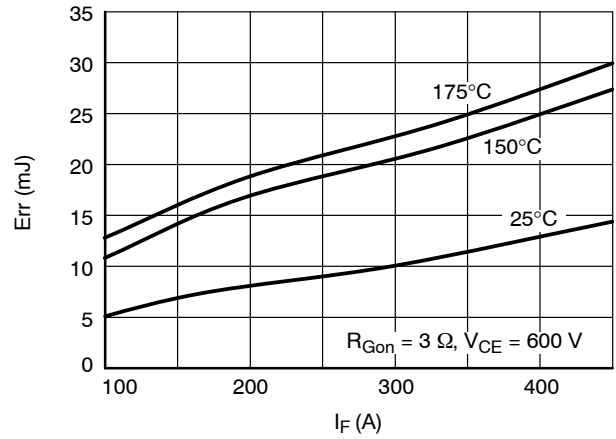


Figure 16. Diode Switching Losses vs. I<sub>F</sub>

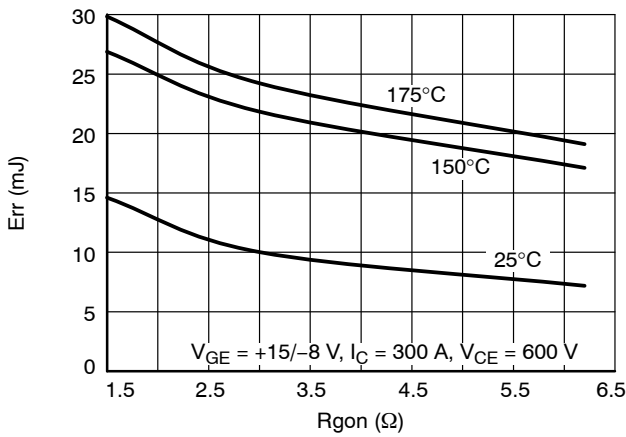


Figure 17. Diode Reverse Recovery Losses vs. R<sub>gon</sub>

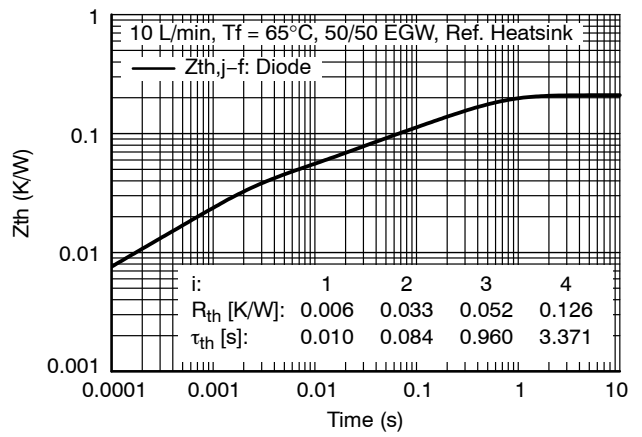


Figure 18. Diode Transient Thermal Impedance



# VE-Trac™ Dual NVG450A120L5DSC

## TYPICAL CHARACTERISTICS

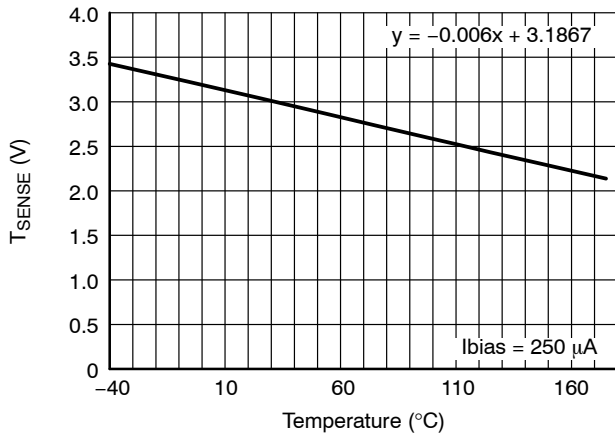


Figure 19. Temperature Sensor Characteristics

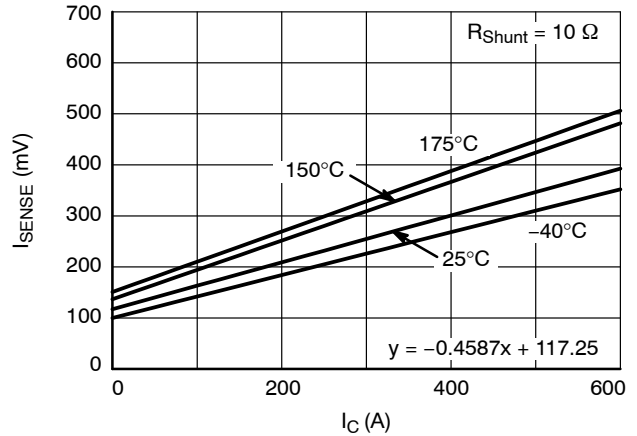


Figure 20. Current Sensor Characteristics

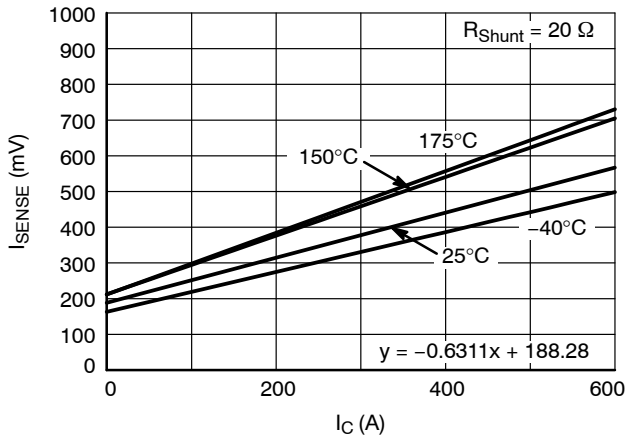
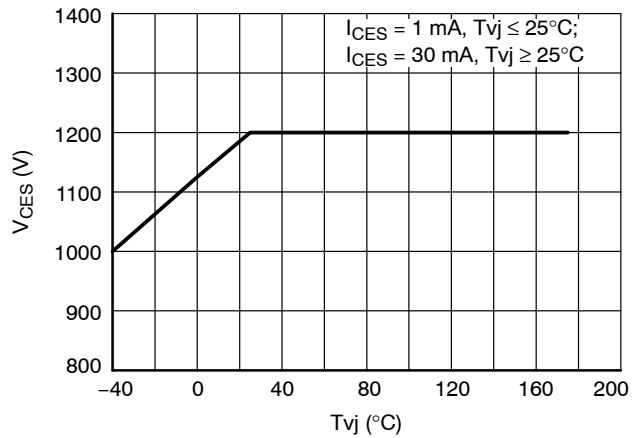


Figure 21. Current Sensor Characteristics



Verified by characterization/design, not by test.

Figure 22. Maximum Allowed Vce

### ORDERING INFORMATION

Device	Device Marking	Package	Shipping
NVG450A120L5DSC	N412DSC	AHPM15-CEA (Pb-Free)	6 Unit / Tube

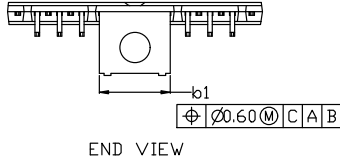
VE-Trac is a trademark of Semiconductor Components Industries, LLC (SCILLC) or its subsidiaries in the United States and/or other countries.

# MECHANICAL CASE OUTLINE PACKAGE DIMENSIONS

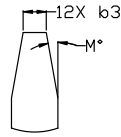


## AHPM15-CEA CASE 100DD ISSUE B

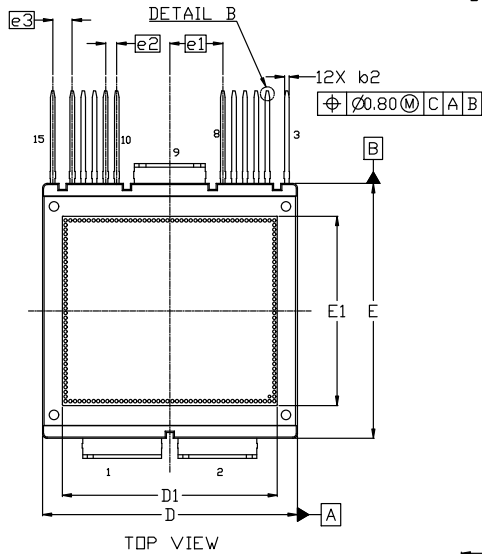
DATE 28 SEP 2022



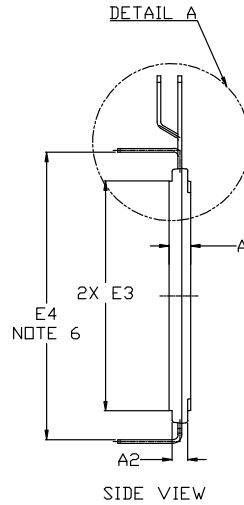
END VIEW



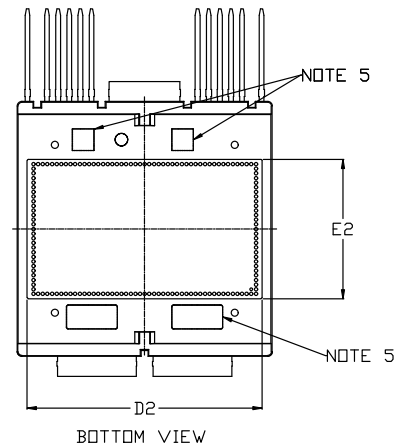
DETAIL B



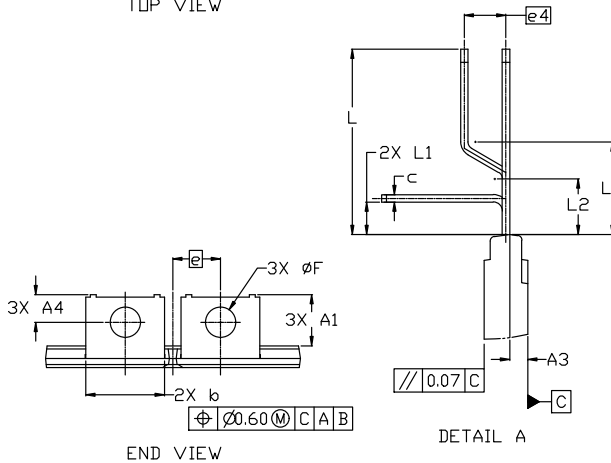
TOP VIEW



SIDE VIEW



BOTTOM VIEW



END VIEW

DETAIL A

DIM	MILLIMETERS		
	MIN.	NOM.	MAX.
A	4.65	4.70	4.75
A1	10.75	11.05	11.35
A2	3.20	3.40	3.60
A3	1.60	1.95	2.30
A4	5.70	6.00	6.30
b	16.90	17.00	17.10
b1	15.20	15.30	15.40
b2	0.90	1.00	1.10
b3	0.50 REF		
c	0.70	0.80	0.90
D	54.80	55.00	55.20
D1	46.20	46.50	46.80
D2	50.70	51.00	51.30

DIM	MILLIMETERS		
	MIN.	NOM.	MAX.
E	54.80	55.00	55.20
E1	40.50	40.80	41.10
E2	29.80	30.10	30.40
E3	49.40	49.60	49.80
E4	61.75	62.00	62.25
e	10.30 BSC		
e1	11.45 BSC		
e2	2.40 BSC		
e3	4.20 BSC		
e4	4.50 BSC		
F	6.45	6.50	6.55
L	19.60	20.00	20.40
L1	3.10	3.50	3.90
L2	5.70	6.00	6.30
L3	9.70	10.00	10.30
M	10° REF		

### GENERIC MARKING DIAGRAM\*



ZZZ = Assembly Lot Code  
 AT = Assembly & Test Site Code  
 Y = Year  
 WW = Work Week  
 XXXX = Specific Device Code  
 NNN = Serial Number

\*This information is generic. Please refer to device data sheet for actual part marking. Pb-Free indicator, "G" or microdot "•", may or may not be present. Some products may not follow the Generic Marking.

<b>DOCUMENT NUMBER:</b>	<b>98AON86580G</b>	Electronic versions are uncontrolled except when accessed directly from the Document Repository. Printed versions are uncontrolled except when stamped "CONTROLLED COPY" in red.
<b>DESCRIPTION:</b>	<b>AHPM15-CEA</b>	<b>PAGE 1 OF 1</b>

onsemi and ONSEMI are trademarks of Semiconductor Components Industries, LLC dba onsemi or its subsidiaries in the United States and/or other countries. onsemi reserves the right to make changes without further notice to any products herein. onsemi makes no warranty, representation or guarantee regarding the suitability of its products for any particular purpose, nor does onsemi assume any liability arising out of the application or use of any product or circuit, and specifically disclaims any and all liability, including without limitation special, consequential or incidental damages. onsemi does not convey any license under its patent rights nor the rights of others.

**onsemi**, **Onsemi**, and other names, marks, and brands are registered and/or common law trademarks of Semiconductor Components Industries, LLC dba "**onsemi**" or its affiliates and/or subsidiaries in the United States and/or other countries. **onsemi** owns the rights to a number of patents, trademarks, copyrights, trade secrets, and other intellectual property. A listing of **onsemi**'s product/patent coverage may be accessed at [www.onsemi.com/site/pdf/Patent-Marking.pdf](http://www.onsemi.com/site/pdf/Patent-Marking.pdf). **onsemi** reserves the right to make changes at any time to any products or information herein, without notice. The information herein is provided "as-is" and **onsemi** makes no warranty, representation or guarantee regarding the accuracy of the information, product features, availability, functionality, or suitability of its products for any particular purpose, nor does **onsemi** assume any liability arising out of the application or use of any product or circuit, and specifically disclaims any and all liability, including without limitation special, consequential or incidental damages. Buyer is responsible for its products and applications using **onsemi** products, including compliance with all laws, regulations and safety requirements or standards, regardless of any support or applications information provided by **onsemi**. "Typical" parameters which may be provided in **onsemi** data sheets and/or specifications can and do vary in different applications and actual performance may vary over time. All operating parameters, including "Typicals" must be validated for each customer application by customer's technical experts. **onsemi** does not convey any license under any of its intellectual property rights nor the rights of others. **onsemi** products are not designed, intended, or authorized for use as a critical component in life support systems or any FDA Class 3 medical devices or medical devices with a same or similar classification in a foreign jurisdiction or any devices intended for implantation in the human body. Should Buyer purchase or use **onsemi** products for any such unintended or unauthorized application, Buyer shall indemnify and hold **onsemi** and its officers, employees, subsidiaries, affiliates, and distributors harmless against all claims, costs, damages, and expenses, and reasonable attorney fees arising out of, directly or indirectly, any claim of personal injury or death associated with such unintended or unauthorized use, even if such claim alleges that **onsemi** was negligent regarding the design or manufacture of the part. **onsemi** is an Equal Opportunity/Affirmative Action Employer. This literature is subject to all applicable copyright laws and is not for resale in any manner.

---

## ADDITIONAL INFORMATION

### TECHNICAL PUBLICATIONS:

Technical Library: [www.onsemi.com/design/resources/technical-documentation](http://www.onsemi.com/design/resources/technical-documentation)  
onsemi Website: [www.onsemi.com](http://www.onsemi.com)

### ONLINE SUPPORT: [www.onsemi.com/support](http://www.onsemi.com/support)

For additional information, please contact your local Sales Representative at [www.onsemi.com/support/sales](http://www.onsemi.com/support/sales)