

NCP1083 Evaluation Board User's Manual

PoE-PD Interface & Flyback Controller Board



NCP1083REF12VC4GEVB

General

The NCP1083REF12VC4GEVB board allows easy implementation and evaluation of a Power-over-Ethernet powered equipment that is able to operate with an assigned power level up to 25.5 W. The evaluation board is based on PoE Powered Device controller NCP1083 (U2) with integrated PoE PD interface controller and Flyback DC/DC controller. The Flyback converter on this NCP1083 based reference design generates a 12 V output voltage that is isolated from the Ethernet link conductors.

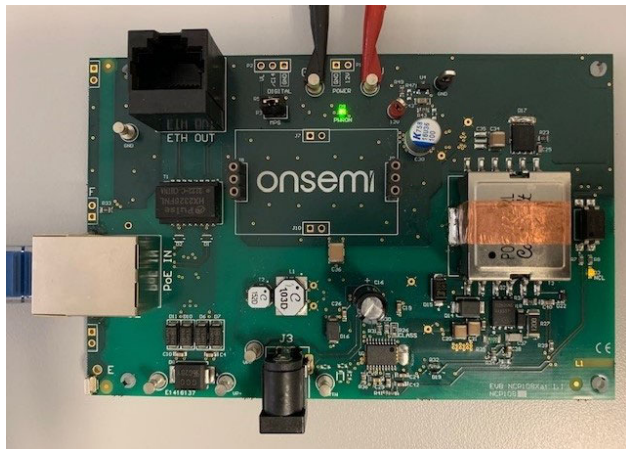


Figure 1. Operational NCP1083REF12VC4GEVB showing Basic Interconnections

The NCP1083REF12VC4GEVB board is designed as a PoE splitter: having a PoE-enabled Ethernet port (labeled “PoE IN”) as input and generating an isolated 12 V supply while passing through the data to another Ethernet port (labeled “ETH OUT”).

Quick Start Guide

Step 1: Make sure the jumper is mounted on header P3 (labeled “MPS”).

Step 2: Insert the Ethernet cable (cf. blue cable in the picture on the left) coming from the PSE in the Ethernet connector J2 labeled “PoE IN”.

Step 3: Observe the status LEDs.

If the PSE powers up the system, the green POWER-ON LED (labeled “PWRON”) should be ON.

The status of the yellow LED (labeled “NCL”) depends on the PSE being used.

Step 4: Optionally connect the turret terminals that are labeled “GND” and “12V” to a DC electronic load (cf. black and red clips in the picture on the left). The DC electronic load behind the NCP1083 EVB should be operational over a 11 V to 13 V voltage range.

NCP1083REF12VC4GEVB

Assigned Power

The NCP1083REF12VC4GEVB will request Class 4 during Physical Layer classification. PDs need to consider that they can be underpowered and eventually be assigned to Class 3.

The state of the nCLASS_AT output provides information about the power level that the PSE has assigned to the NCP1083REF12VC4GEVB during classification. See Table 1 to determine the assigned power based on the status of the orange NCL led.

Table 1. CLASSIFICATION RESULT

NCL Led	Assigned Class	Assigned Power
off	3	13 W
on	4	25.5 W

Figure 2 shows that the load on the 12 V output should be limited to **1.82 A** to meet the maximum input average power for **Class 4** over the complete input DC voltage range. Likewise, Figure 3 shows that the load on the 12 V output should be limited to **0.92 A** to meet the maximum input average power for **Class 3** over the complete input DC voltage range.

The application should always operate at or below the assigned power limit. Failure to do so will result in the PSE disconnecting the PD !

Maintain Power Signature (MPS)

A PD should draw a minimum amount of current in order to prevent the PSE from removing power. The load resistor R15 was added on the bottom side of the board to be able to make sure the load current is always sufficient and the NCP1083REF12VC4GEVB remains powered. This load resistor R15 is enabled when a **jumper** is placed on header P3 labeled “MPS”. As can be seen in Figure 4, the input current remains well above 10 mA over the complete PSE output voltage range when the jumper is mounted on the “MPS” header P3.

Depending on the minimum current the system may draw, the resistance value of R15 should be increased for the final design in order not to waste power unnecessarily.

For some systems, the load resistor can even be omitted.

Earth Connection

A Powered Device (PD) can operate without an earth connection.

In case NCP1083REF12VGEVB would need to be earthed, it should be the frame ground “Frame” that is connected to earth. This could be implemented in one of the following ways:

- Soldering an earthed wire in the 1.6 mm hole (labeled “E”)
- Connecting an earthed wire with alligator clip on the SMT Test Point on the top (TP12) or the SMT Test Point on the bottom (TP17)
- Connecting a shielded Ethernet cable of which the shield is earthed to the PoE-enabled Ethernet port J2 (labeled “PoE IN”)

If NCP1083REF12VGEVB is earthed, the internal system ground “GND” should not be driven more than 15 V above or below earth potential in order not to overstress TVS diode D21.

Auxiliary Supply

The NCP1083REF12VC4GEVB supports drawing power from an alternate or local power source in applications connected to non-PoE enabled networks. A rear auxiliary supply can be inserted in connector J3.

The recommended voltage of the auxiliary supply is 48 V, but eventually the NCP1083REF12VC4GEVB is able to operate with a higher auxiliary supply voltage up to 57 V.

Requested Power

As mentioned before, the NCP1083REF12VC4GEVB will request Class 4 during Physical Layer classification. If a lower Class or power level is preferred, resistor R26 labeled “CLASS” should be changed. See the NCP1083 datasheet for the nominal resistance values.

NCP1083REF12VC4GEVB

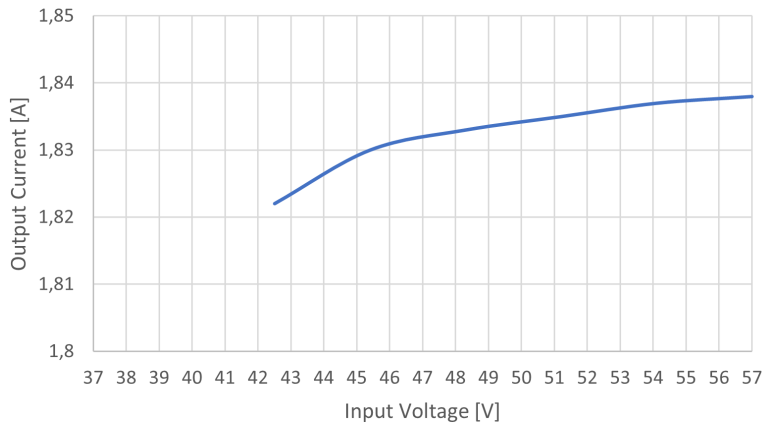


Figure 2. Output Current vs. PoE Input Voltage – Full Input Power Load (Class 4)

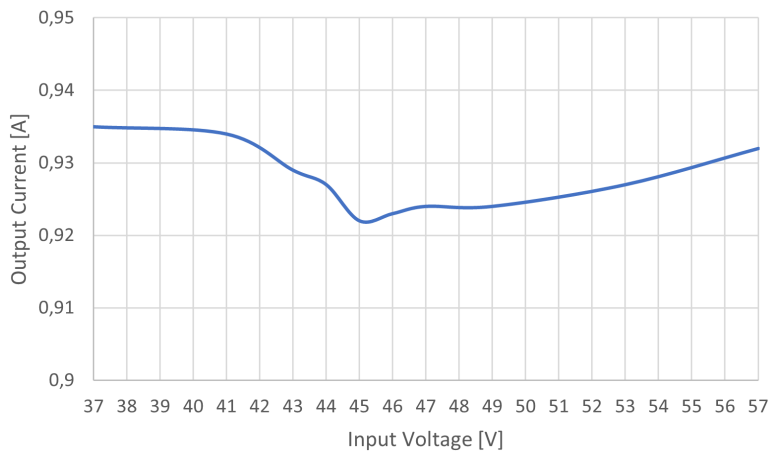


Figure 3. Output Current vs. PoE Input Voltage – Full Input Power Load (Class 3)

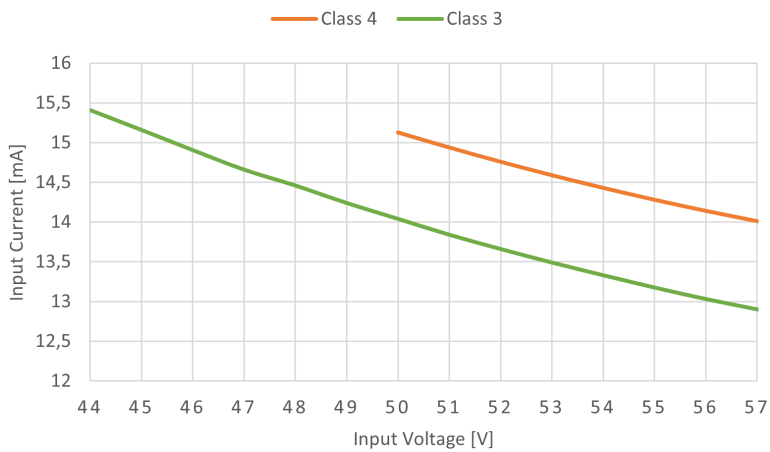


Figure 4. PoE Input Current vs PoE Input Voltage – No Output Load except R15

NCP1083REF12VC4GEVB

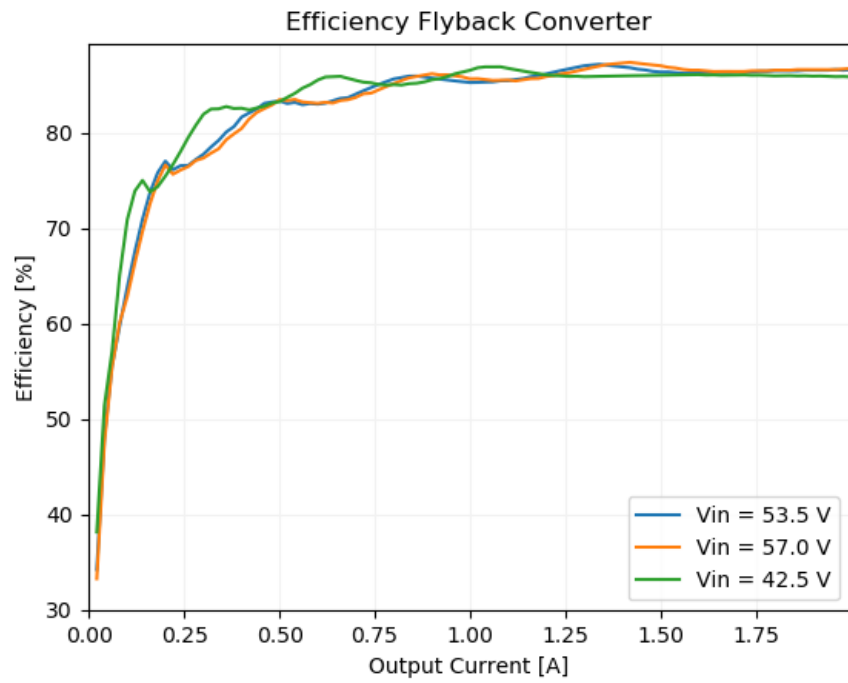


Figure 5. Efficiency vs. Output Current

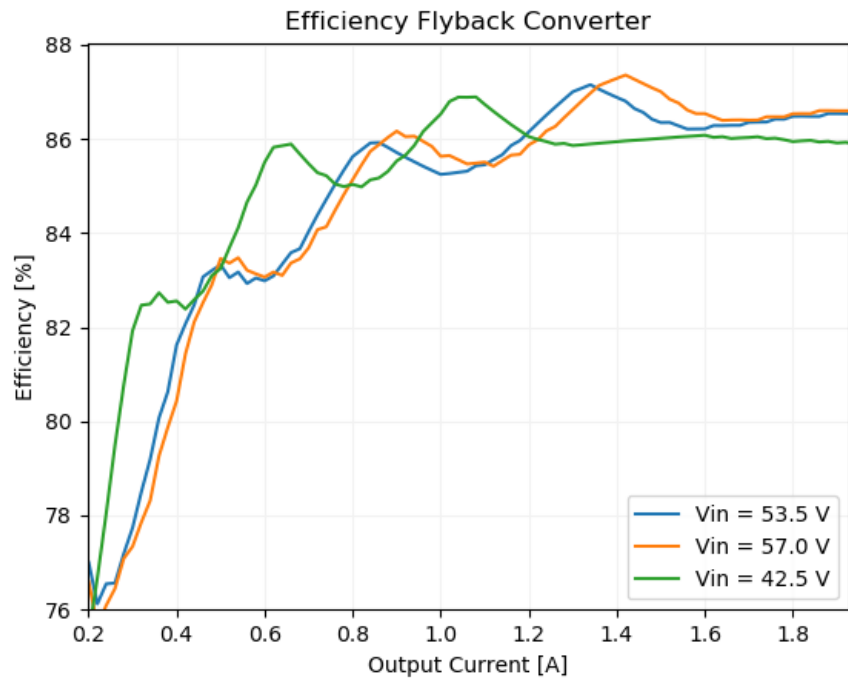


Figure 6. Efficiency vs. Output Current - Zoom In

NCP1083REF12VC4GEVB

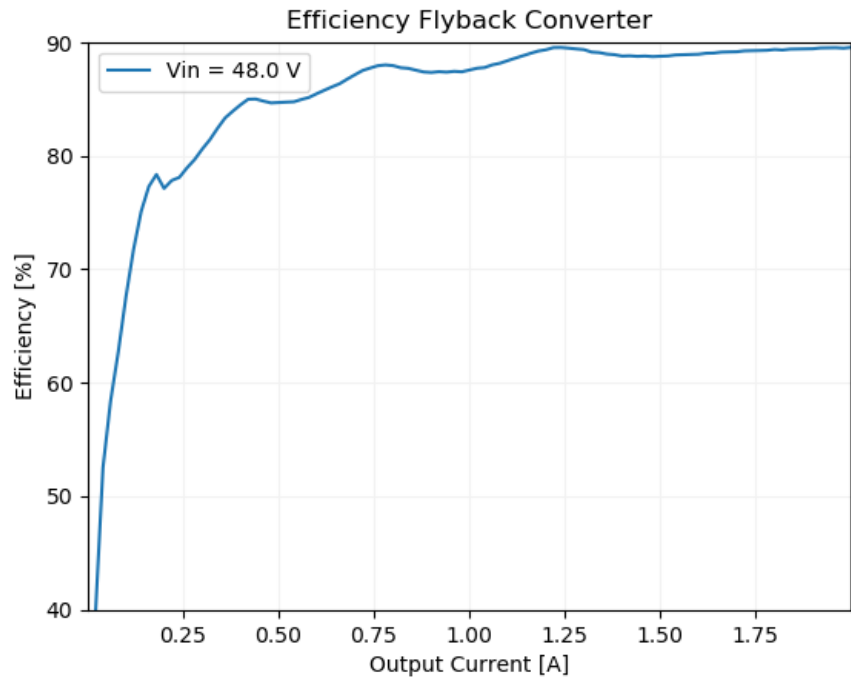


Figure 7. Efficiency vs. Output Current – from (VPP,RTN) to (12V,GND)

NCP1083REF12VC4GEVB

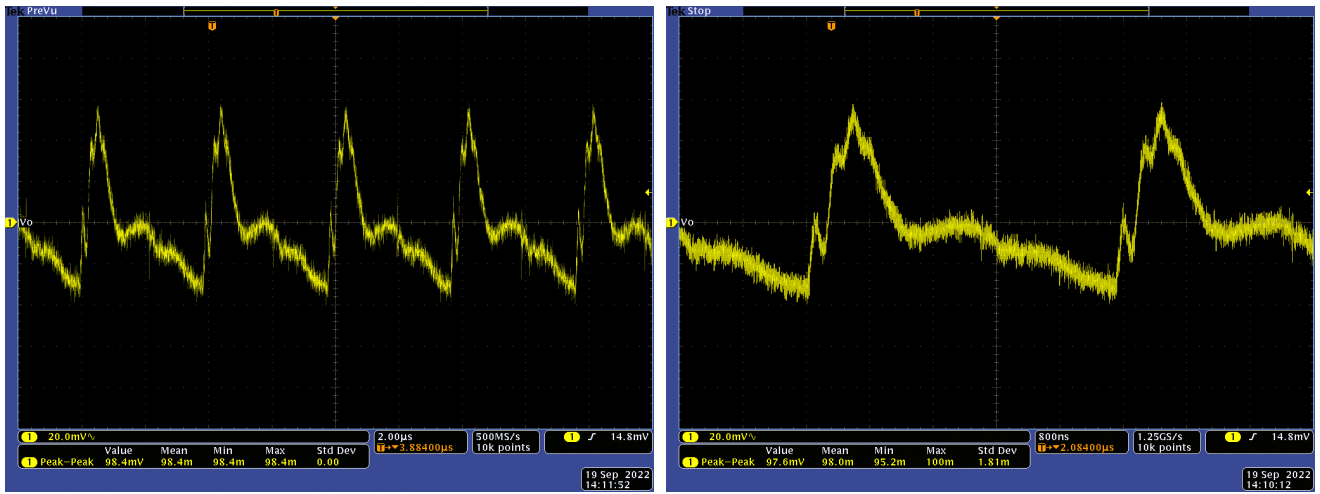


Figure 8. 12 V Output Ripple and Noise

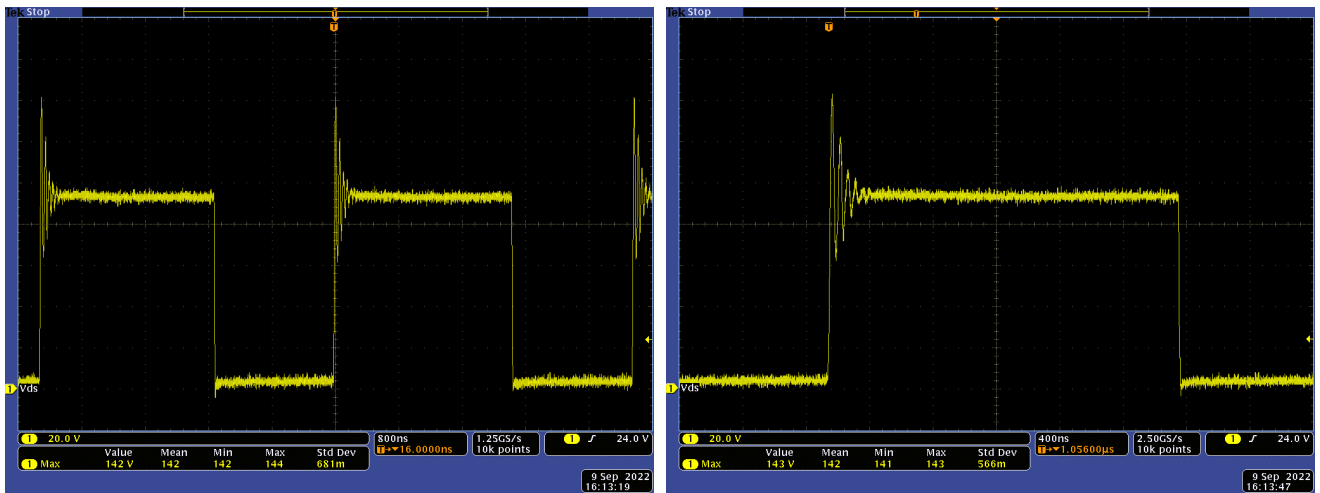


Figure 9. $V_{DrainSource}$ Primary Mosfet Q2 ($V_{PD} = 57$ V)

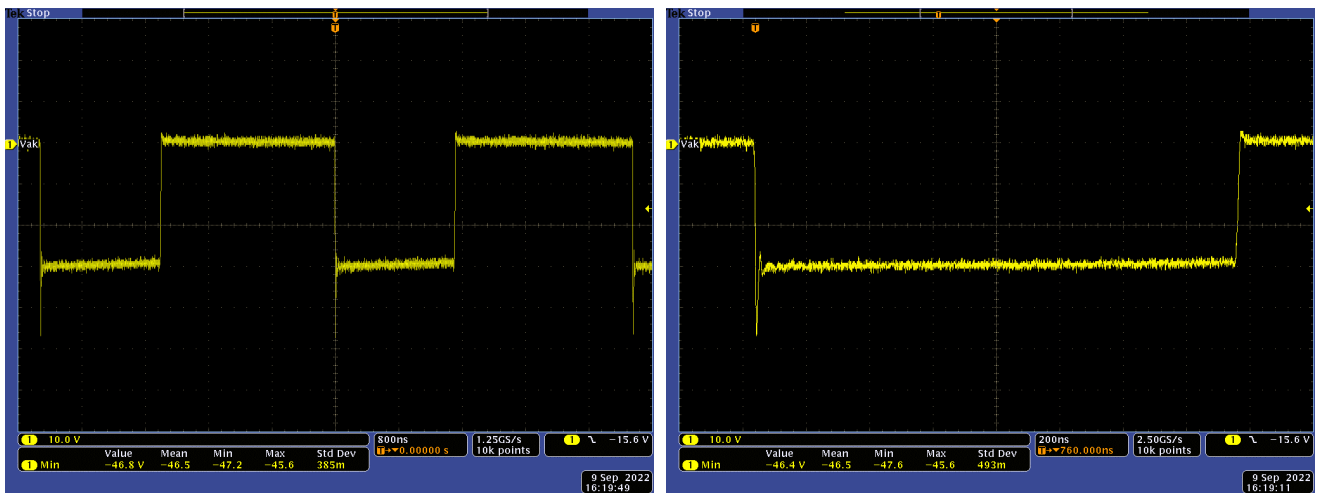


Figure 10. $V_{CathodeAnode}$ Secondary Diode D17 ($V_{PD} = 57$ V)

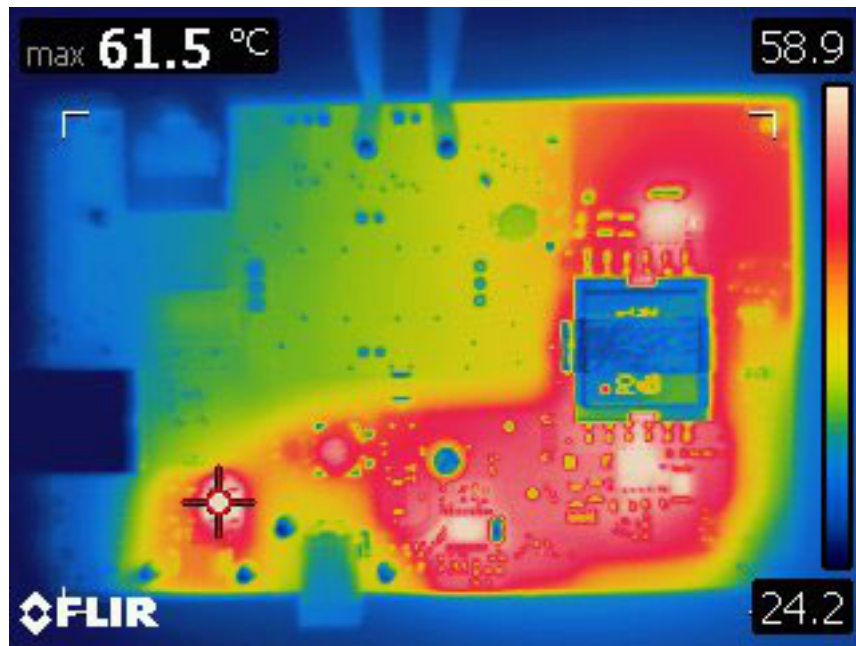


Figure 11. Thermal Image – Top

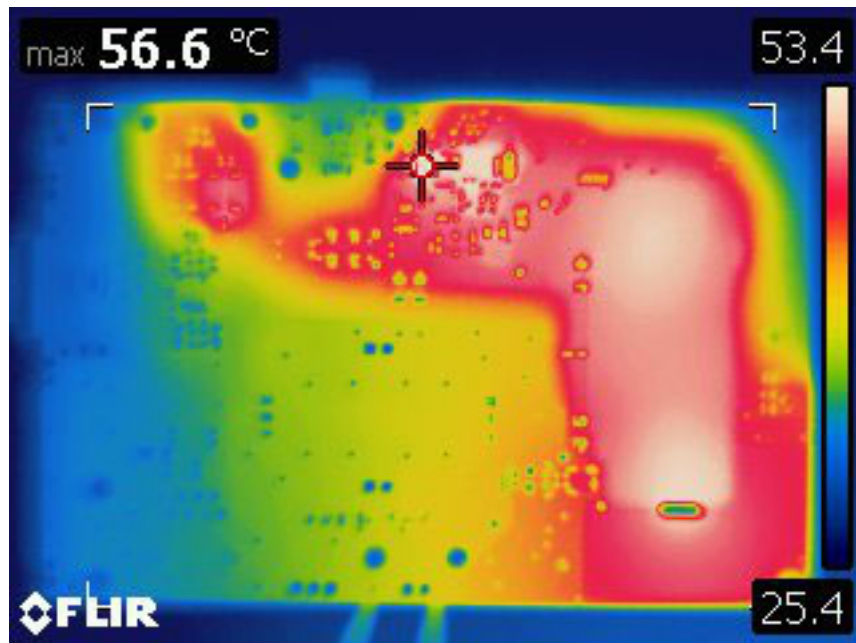


Figure 12. Thermal Image – Bottom

NCP1083REF12VC4GEVB



Figure 13. Emission Test DUT: NCP1083REF12VGEVB with 7.3 Ω Load

NCP1083REF12VC4GEVB

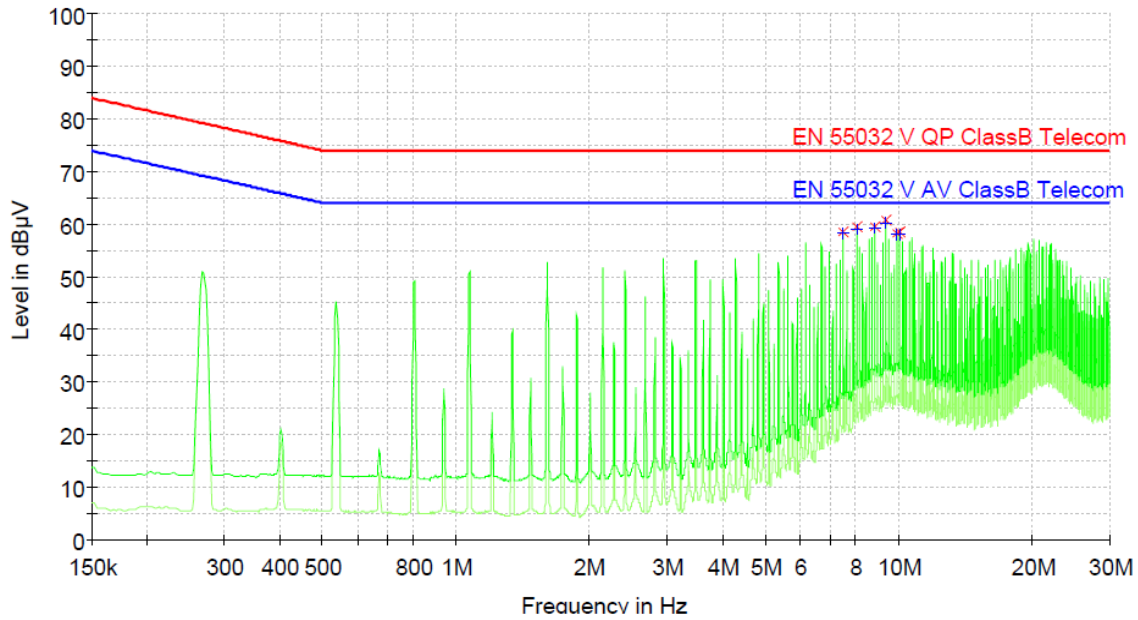


Figure 14. Conducted Emission – Preview Result and Final Result

Table 2. CONDUCTED EMISSION – FINAL RESULT QPK

Frequency (MHz)	QuasiPeak (dBµV)	Limit (dBµV)	Margin (dB)	Corr. (dB)
7.503000	58.48	74.00	15.52	9.6
8.038500	59.38	74.00	14.62	9.7
8.841750	59.61	74.00	14.39	9.7
9.379500	60.63	74.00	13.37	9.7
9.915000	58.32	74.00	15.68	9.7
10.047750	58.47	74.00	15.53	9.7

Table 3. CONDUCTED EMISSION – FINAL RESULT CAV

Frequency (MHz)	CAverage (dBµV)	Limit (dBµV)	Margin (dB)	Corr. (dB)
7.503000	58.25	64.00	5.76	9.6
8.038500	59.12	64.00	4.88	9.7
8.844000	59.30	64.00	4.70	9.7
9.379500	60.29	64.00	3.71	9.7
9.915000	57.94	64.00	6.06	9.7
10.047750	58.08	64.00	5.92	9.7

NCP1083REF12VC4GEVB

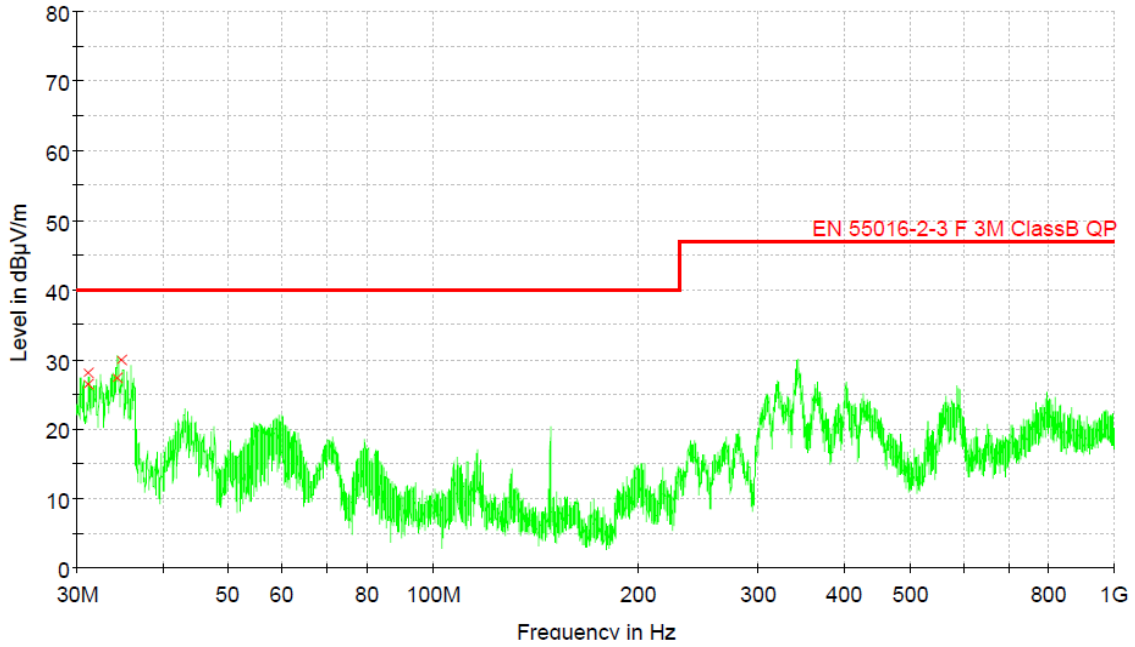


Figure 15. Radiated Emission – Preview Result and Final Result

Table 4. RADIATED EMISSION – FINAL RESULT QPK

Frequency (MHz)	QuasiPeak (dBµV/m)	Limit (dBµV/m)	Margin (dB)	Meas. Time (ms)	Bandwidth (kHz)	Height (cm)	Pol	Azimuth (deg)	Corr. (dB/m)
31.160000	28.15	40.00	11.85	1000.0	120.000	98.0	V	173.0	-9.9
31.180000	26.45	40.00	13.55	1000.0	120.000	122.0	V	253.0	-9.9
34.360000	27.29	40.00	12.71	1000.0	120.000	103.0	V	138.0	-11.8
34.900000	29.86	40.00	10.14	1000.0	120.000	98.0	V	309.0	-12.1

NCP1083REF12VC4GEVB

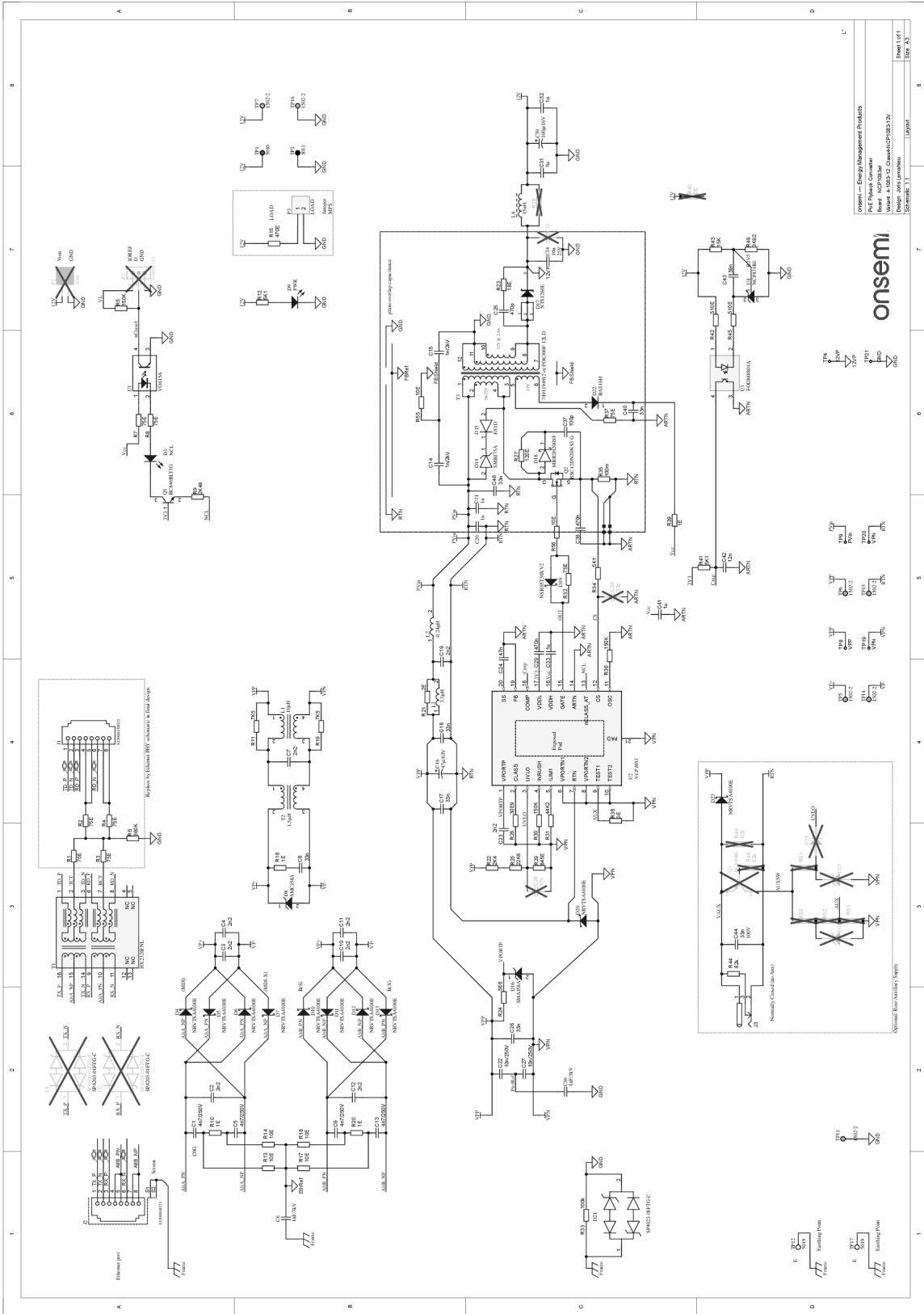


Figure 16. Schematic Diagram NCP1083REF12VC4GEVB

onsemi, **Onsemi**, and other names, marks, and brands are registered and/or common law trademarks of Semiconductor Components Industries, LLC dba "**onsemi**" or its affiliates and/or subsidiaries in the United States and/or other countries. **onsemi** owns the rights to a number of patents, trademarks, copyrights, trade secrets, and other intellectual property. A listing of **onsemi**'s product/patent coverage may be accessed at www.onsemi.com/site/pdf/Patent-Marking.pdf. **onsemi** is an Equal Opportunity/Affirmative Action Employer. This literature is subject to all applicable copyright laws and is not for resale in any manner.

The evaluation board/kit (research and development board/kit) (hereinafter the "board") is not a finished product and is not available for sale to consumers. The board is only intended for research, development, demonstration and evaluation purposes and will only be used in laboratory/development areas by persons with an engineering/technical training and familiar with the risks associated with handling electrical/mechanical components, systems and subsystems. This person assumes full responsibility/liability for proper and safe handling. Any other use, resale or redistribution for any other purpose is strictly prohibited.

THE BOARD IS PROVIDED BY ONSEMI TO YOU "AS IS" AND WITHOUT ANY REPRESENTATIONS OR WARRANTIES WHATSOEVER. WITHOUT LIMITING THE FOREGOING, ONSEMI (AND ITS LICENSORS/SUPPLIERS) HEREBY DISCLAIMS ANY AND ALL REPRESENTATIONS AND WARRANTIES IN RELATION TO THE BOARD, ANY MODIFICATIONS, OR THIS AGREEMENT, WHETHER EXPRESS, IMPLIED, STATUTORY OR OTHERWISE, INCLUDING WITHOUT LIMITATION ANY AND ALL REPRESENTATIONS AND WARRANTIES OF MERCHANTABILITY, FITNESS FOR A PARTICULAR PURPOSE, TITLE, NON-INFRINGEMENT, AND THOSE ARISING FROM A COURSE OF DEALING, TRADE USAGE, TRADE CUSTOM OR TRADE PRACTICE.

onsemi reserves the right to make changes without further notice to any board.

You are responsible for determining whether the board will be suitable for your intended use or application or will achieve your intended results. Prior to using or distributing any systems that have been evaluated, designed or tested using the board, you agree to test and validate your design to confirm the functionality for your application. Any technical, applications or design information or advice, quality characterization, reliability data or other services provided by **onsemi** shall not constitute any representation or warranty by **onsemi**, and no additional obligations or liabilities shall arise from **onsemi** having provided such information or services.

onsemi products including the boards are not designed, intended, or authorized for use in life support systems, or any FDA Class 3 medical devices or medical devices with a similar or equivalent classification in a foreign jurisdiction, or any devices intended for implantation in the human body. You agree to indemnify, defend and hold harmless **onsemi**, its directors, officers, employees, representatives, agents, subsidiaries, affiliates, distributors, and assigns, against any and all liabilities, losses, costs, damages, judgments, and expenses, arising out of any claim, demand, investigation, lawsuit, regulatory action or cause of action arising out of or associated with any unauthorized use, even if such claim alleges that **onsemi** was negligent regarding the design or manufacture of any products and/or the board.

This evaluation board/kit does not fall within the scope of the European Union directives regarding electromagnetic compatibility, restricted substances (RoHS), recycling (WEEE), FCC, CE or UL, and may not meet the technical requirements of these or other related directives.

FCC WARNING – This evaluation board/kit is intended for use for engineering development, demonstration, or evaluation purposes only and is not considered by **onsemi** to be a finished end product fit for general consumer use. It may generate, use, or radiate radio frequency energy and has not been tested for compliance with the limits of computing devices pursuant to part 15 of FCC rules, which are designed to provide reasonable protection against radio frequency interference. Operation of this equipment may cause interference with radio communications, in which case the user shall be responsible, at its expense, to take whatever measures may be required to correct this interference.

onsemi does not convey any license under its patent rights nor the rights of others.

LIMITATIONS OF LIABILITY: **onsemi** shall not be liable for any special, consequential, incidental, indirect or punitive damages, including, but not limited to the costs of requalification, delay, loss of profits or goodwill, arising out of or in connection with the board, even if **onsemi** is advised of the possibility of such damages. In no event shall **onsemi**'s aggregate liability from any obligation arising out of or in connection with the board, under any theory of liability, exceed the purchase price paid for the board, if any.

The board is provided to you subject to the license and other terms per **onsemi**'s standard terms and conditions of sale. For more information and documentation, please visit www.onsemi.com.

ADDITIONAL INFORMATION

TECHNICAL PUBLICATIONS:

Technical Library: www.onsemi.com/design/resources/technical-documentation
onsemi Website: www.onsemi.com

ONLINE SUPPORT: www.onsemi.com/support

For additional information, please contact your local Sales Representative at www.onsemi.com/support/sales