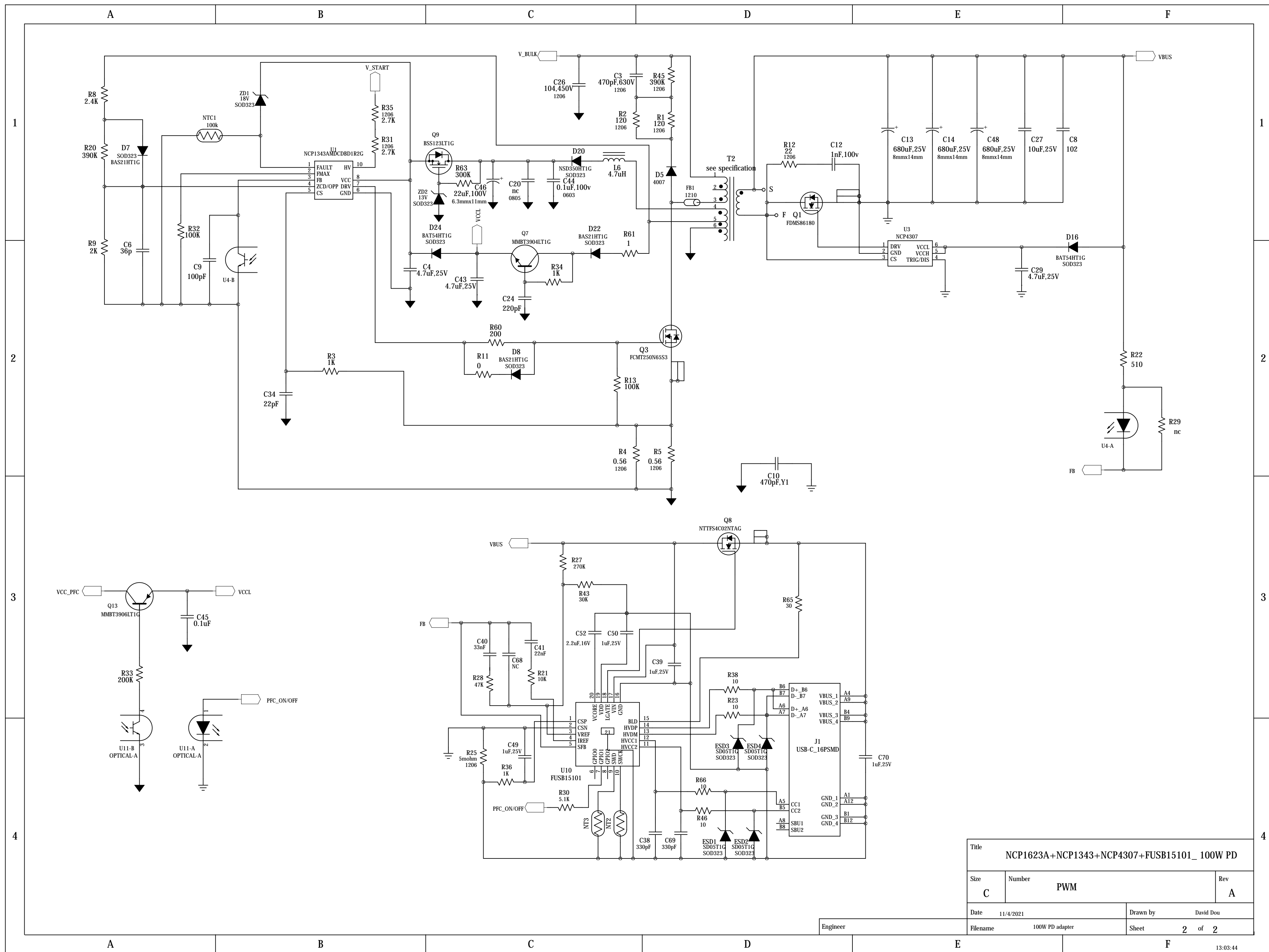


Input Voltage: 90Vac to 264Vac

Title		
NCP1623A+NCP1343+NCP4307+FUSB15101_100W PD		
Size	Number	Rev
C	PFC	A
Date	Drawn by David Dou	
Engineer	Filename	Sheet 1 of 2



Title		
NCP1623A+NCP1343+NCP4307+FUSB15101_ 100W PD		
Size	Number	Rev
C	PWM	A
Date	11/4/2021	Drawn by David Dou
Filename	100W PD adapter	Sheet 2 of 2

Engineer