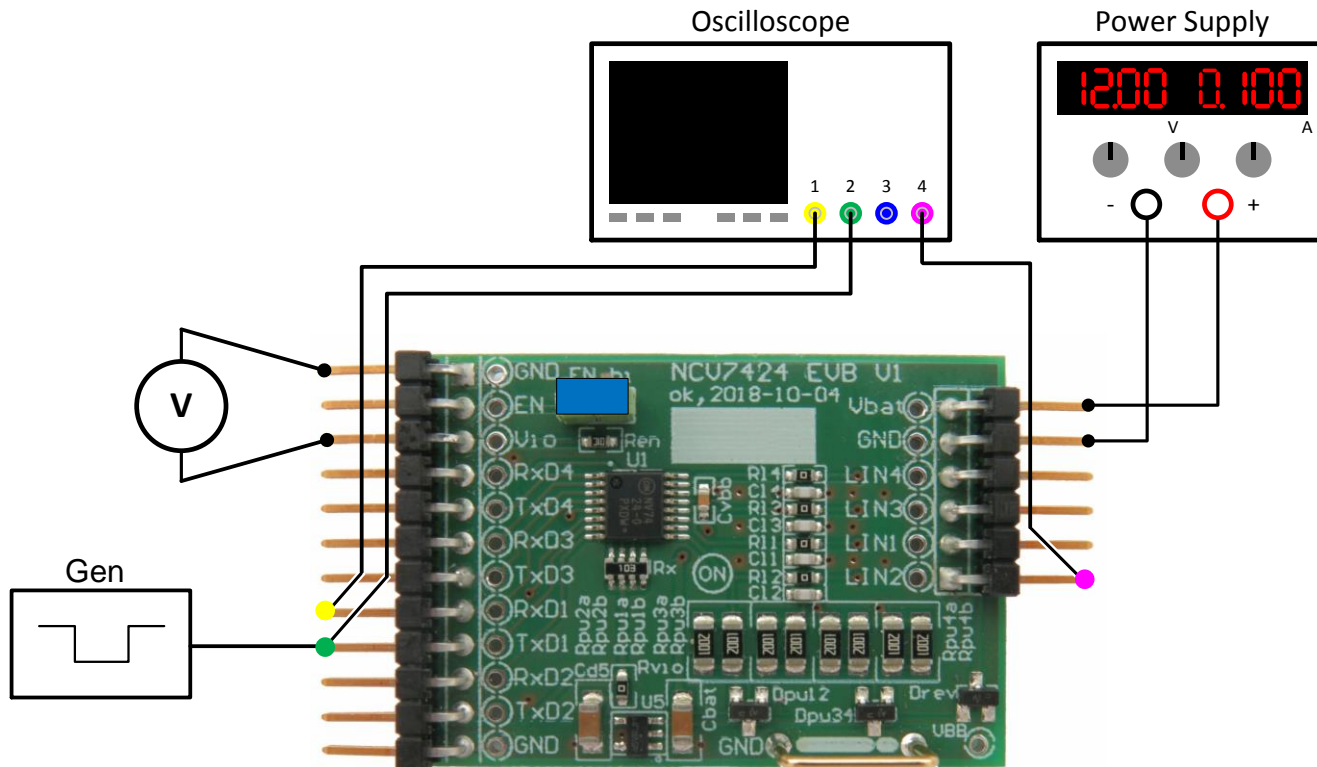




Test Procedure for the NCV7424V1GEVB Evaluation Board



Required Equipment

- Oscilloscope
- Bench Power Supply
- Signal Generator
- NCV7424 Evaluation Board

Test procedure Step 1 (Standby mode):

1. Connect the setup as shown above
2. Keep EN_hi open
3. Check VIO
4. Check I_{Vbat} .

Table 1: Desired Results

VIO see DC characteristics below
$I_{Vbat} < 0.2 \text{ mA}$

Test procedure Step 2 (Normal mode, recessive):



1. Close (short) EN_hi
2. Check I_{Vbat}.

Table 2: Desired Results

I _{Vbat} = < 1 mA – 5 mA >

Test procedure Step 3 (Normal mode, square-wave):

1. Apply Square-wave signal to TxD1-4 (0-5 V, 10 kHz)
2. Check RxD1-4
3. Check LIN1-4

Table 3: Desired Results

RxD HIGH / LOW
LIN RECESSIVE / DOMINANT

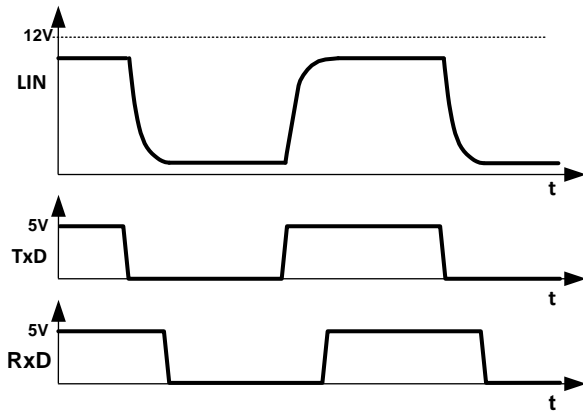


Figure 1: Desired Signals

DC Characteristics

	MIN	TYP	MAX
VIO	4.8 V	5.0 V	5.2 V
RxD LOW		0 V	0.4 V
RxD HIGH	2 V	VIO	
LIN RECESSIVE	Vbat – 2 V		
LIN DOMINANT			2 V