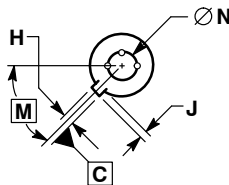
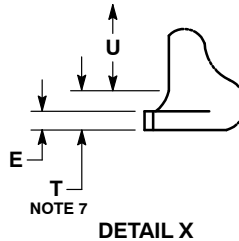
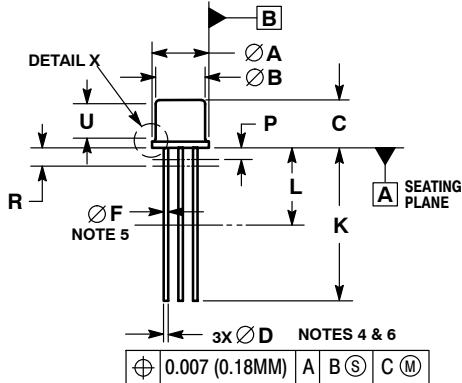




SCALE 1:1

TO-18
CASE 206AA
ISSUE A

DATE 21 AUG 2012



NOTES:

1. DIMENSIONING AND TOLERANCING PER ASME Y14.5M, 1994.
2. CONTROLLING DIMENSION: INCHES.
3. DIMENSION J MEASURED FROM DIAMETER A TO EDGE.
4. LEAD TRUE POSITION TO BE DETERMINED AT THE GAUGE PLANE DEFINED BY DIMENSION R.
5. DIMENSION F APPLIES BETWEEN DIMENSION P AND L.
6. DIMENSION D APPLIES BETWEEN DIMENSION L AND K.
7. BODY CONTOUR OPTIONAL WITHIN ZONE DEFINED BY DIMENSIONS A, B, AND T.

DIM	MILLIMETERS		INCHES	
	MIN	MAX	MIN	MAX
A	5.31	5.84	0.209	0.230
B	4.52	4.95	0.178	0.195
C	4.32	5.33	0.170	0.210
D	0.41	0.53	0.016	0.021
E	---	0.76	---	0.030
F	0.41	0.48	0.016	0.019
H	0.91	1.17	0.036	0.046
J	0.71	1.22	0.028	0.048
K	12.70	19.05	0.500	0.750
L	6.35	---	0.250	---
M	45° BSC		45° BSC	
N	2.54 BSC		0.100 BSC	
P	---	1.27	---	0.050
R	1.37 BSC		0.054 BSC	
T	---	0.76	---	0.030
U	2.54	---	0.100	---

STYLE 1:
PIN 1. EMITTER
2. BASE
3. COLLECTOR

STYLE 4:
PIN 1. SOURCE
2. DRAIN
3. GATE & CASE

STYLE 7:
PIN 1. ANODE
2. BASE
3. CATHODE

STYLE 10:
PIN 1. BASE
2. EMITTER
3. BASE

STYLE 2:
PIN 1. SOURCE, SUBSTRATE
& CASE
2. GATE
3. DRAIN

STYLE 5:
PIN 1. EMITTER
2. BASE 1
3. BASE 2

STYLE 8:
PIN 1. GATE
2. ANODE 1
3. ANODE 2

STYLE 11:
PIN 1. DRAIN
2. GATE
3. SOURCE, SUBSTRATE

STYLE 3:
PIN 1. SOURCE
2. DRAIN
3. GATE

STYLE 6:
PIN 1. CATHODE
2. GATE
3. ANODE

STYLE 9:
PIN 1. ANODE 2
2. ANODE 1
3. GATE
(CONNECTED TO CASE)

STYLE 12:
PIN 1. SOURCE
2. GATE
3. DRAIN (CASE)

DOCUMENT NUMBER: 98AON45207E

Electronic versions are uncontrolled except when accessed directly from the Document Repository.
Printed versions are uncontrolled except when stamped "CONTROLLED COPY" in red.

DESCRIPTION: TO-18 3-LEAD

PAGE 1 OF 1

onsemi and onsemi are trademarks of Semiconductor Components Industries, LLC dba onsemi or its subsidiaries in the United States and/or other countries. onsemi reserves the right to make changes without further notice to any products herein. onsemi makes no warranty, representation or guarantee regarding the suitability of its products for any particular purpose, nor does onsemi assume any liability arising out of the application or use of any product or circuit, and specifically disclaims any and all liability, including without limitation special, consequential or incidental damages. onsemi does not convey any license under its patent rights nor the rights of others.