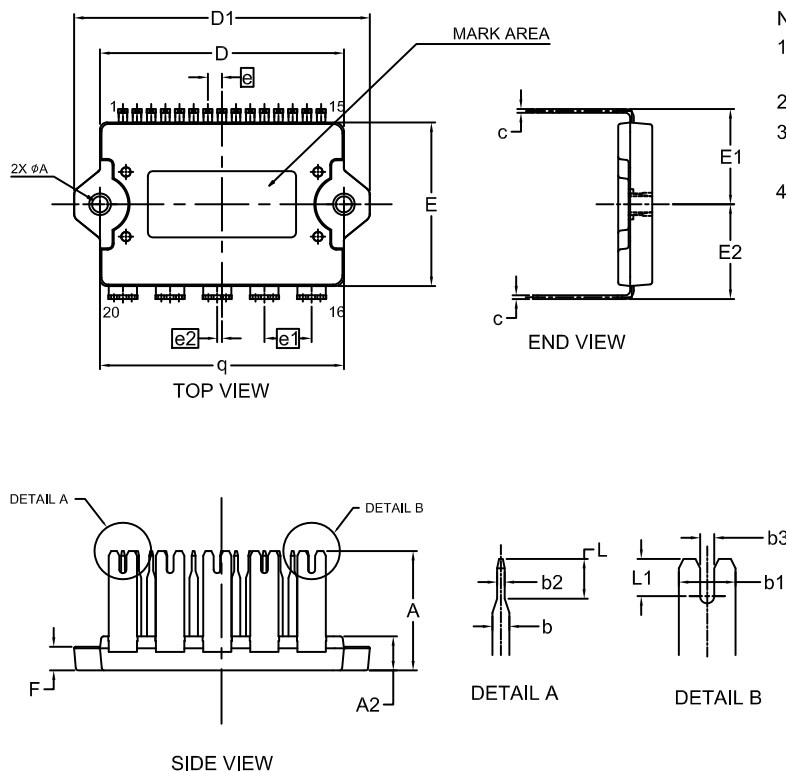


**APM20CBB / 20LD, PDD STD, R-EPS MODULE**  
CASE MODFZ  
ISSUE A

DATE 12 DEC 2017



## NOTES:

1. DIMENSIONING AND TOLERANCING PER ASME Y14.5M, 2009.
2. CONTROLLING DIMENSION: MILLIMETERS
3. DIMENSIONS ARE EXCLUSIVE OF BURRS, MOLD FLASH AND TIE BAR EXTRUSIONS.
4. DIMENSION b and c APPLY TO THE PLATED LEADS AND ARE MEASURED BETWEEN 1.00 AND 2.00MM FROM THE LEAD TIP.

DIM	MILLIMETERS		
	MIN.	NOM.	MAX.
A	25.00	25.30	25.60
A2	7.00	7.20	7.40
b	1.70	1.80	1.90
b1	5.80	6.00	6.20
b2	0.70	0.80	0.90
b3	1.40	1.50	1.60
c	0.75	0.80	0.90
D	51.50	51.70	51.90
D1	62.40	62.70	63.00
E	34.50	34.70	34.90
E1	20.00	20.20	20.40
E2	19.90	20.10	20.30
e	3.00 BSC		
e1	10.00 BSC		
e2	1.00 BSC		
F	4.80	5.00	5.20
L	4.00	4.20	4.40
L1	3.75	3.95	4.15
q	51.50	51.70	51.90
φA	3.30	3.40	3.50

<b>DOCUMENT NUMBER:</b>	<b>98AON65365G</b>	Electronic versions are uncontrolled except when accessed directly from the Document Repository. Printed versions are uncontrolled except when stamped "CONTROLLED COPY" in red.
<b>DESCRIPTION:</b>	<b>APM20CBB / 20LD, PDD STD, R-EPS MODULE</b>	<b>PAGE 1 OF 1</b>

onsemi and onsemi are trademarks of Semiconductor Components Industries, LLC dba onsemi or its subsidiaries in the United States and/or other countries. onsemi reserves the right to make changes without further notice to any products herein. onsemi makes no warranty, representation or guarantee regarding the suitability of its products for any particular purpose, nor does onsemi assume any liability arising out of the application or use of any product or circuit, and specifically disclaims any and all liability, including without limitation special, consequential or incidental damages. onsemi does not convey any license under its patent rights nor the rights of others.