

ON Semiconductor

Is Now

The logo for onsemi, featuring the word "onsemi" in a dark teal, lowercase, sans-serif font. The letter "i" is stylized with a white dot and a teal vertical bar. A small orange triangle is positioned above the top right of the "i". A trademark symbol (TM) is located to the right of the logo.

To learn more about onsemi™, please visit our website at
www.onsemi.com

onsemi and **onsemi** and other names, marks, and brands are registered and/or common law trademarks of Semiconductor Components Industries, LLC dba "**onsemi**" or its affiliates and/or subsidiaries in the United States and/or other countries. **onsemi** owns the rights to a number of patents, trademarks, copyrights, trade secrets, and other intellectual property. A listing of **onsemi** product/patent coverage may be accessed at www.onsemi.com/site/pdf/Patent-Marking.pdf. **onsemi** reserves the right to make changes at any time to any products or information herein, without notice. The information herein is provided "as-is" and **onsemi** makes no warranty, representation or guarantee regarding the accuracy of the information, product features, availability, functionality, or suitability of its products for any particular purpose, nor does **onsemi** assume any liability arising out of the application or use of any product or circuit, and specifically disclaims any and all liability, including without limitation special, consequential or incidental damages. Buyer is responsible for its products and applications using **onsemi** products, including compliance with all laws, regulations and safety requirements or standards, regardless of any support or applications information provided by **onsemi**. "Typical" parameters which may be provided in **onsemi** data sheets and/or specifications can and do vary in different applications and actual performance may vary over time. All operating parameters, including "Typicals" must be validated for each customer application by customer's technical experts. **onsemi** does not convey any license under any of its intellectual property rights nor the rights of others. **onsemi** products are not designed, intended, or authorized for use as a critical component in life support systems or any FDA Class 3 medical devices or medical devices with a same or similar classification in a foreign jurisdiction or any devices intended for implantation in the human body. Should Buyer purchase or use **onsemi** products for any such unintended or unauthorized application, Buyer shall indemnify and hold **onsemi** and its officers, employees, subsidiaries, affiliates, and distributors harmless against all claims, costs, damages, and expenses, and reasonable attorney fees arising out of, directly or indirectly, any claim of personal injury or death associated with such unintended or unauthorized use, even if such claim alleges that **onsemi** was negligent regarding the design or manufacture of the part. **onsemi** is an Equal Opportunity/Affirmative Action Employer. This literature is subject to all applicable copyright laws and is not for resale in any manner. Other names and brands may be claimed as the property of others.

NIS5112 Transient Performance

Prepared by: Alan Ball & Ed Mejia
ON Semiconductor



ON Semiconductor®

<http://onsemi.com>

APPLICATION NOTE

General Description

The NIS5112 is an electronic fuse that incorporates a number of protection features. These include current limiting, thermal protection, and overvoltage protection. This device can replace a fuse/zener combination to add increased reliability and functionality along with the ability to reset automatically. A diode/zener network can clamp both positive and negative spikes on the input line. This device works differently, but can also accomplish the same functions. This application note describes the functions of this chip in this regard.

Positive Transients

Positive transients are limited by the overvoltage circuit. The positive voltage clamp circuit is not designed to absorb energy from the transient, but rather to protect the load from the transient voltage.

This circuit clamps the output by adjusting the conductivity of the internal FET rather than simply shutting the part down. This increases reliability by maintaining a usable output voltage during a positive transient event rather than shutting down the output and causing a system restart.

The internal amplifier will respond to limit the voltage excursion to the limit level within a microsecond as can be seen on the oscilloscope traces. After the settling time of the amplifier, the maximum voltage during the transient is defined by the data sheet and is nominally 15.5 volts.

If a transient occurs for a long enough duration of time such that the die reaches the thermal shutdown point, the part will shut down. There are two versions of the thermal protection circuit available. If the latching device is used, the

part will have to be restarted by either recycling the input power or toggling the enable pin. The auto-retry part will reapply power to the output as soon as the die temperature has reached the lower thermal threshold.

The output voltage is filtered from fast rise times on the input due to the impedance of the electronic fuse coupled with the load capacitance. This creates a low pass filter, which is very effective at removing the fast edges of the transient.

Negative Transients

There is an internal diode in the NIS5112 from V_{CC} to ground, that will conduct if the voltage is reversed. Figure 5 shows the forward drop of that diode vs. current. Figure 4 shows the maximum pulse that the diode can conduct before failure as well as the associated peak voltage for that current pulse with a 25°C ambient temperature.

Figures 6 & 7 show the test current waveforms and resulting voltage profile for several pulses. These are at intermediate current levels and not necessarily the maximum rated current which is shown in Figure 4.

Test Circuit

The test circuit that was used for the positive transient tests is shown in Figure 1. The voltage was switched between two sources with a diode to block the voltage of the 12 volt source. Waveforms show the input and output voltages of the chip. Two traces were taken; one with a 10 μF capacitor on the output and one with a 100 μF capacitor. The voltage was stepped from 12 to 20 volts.

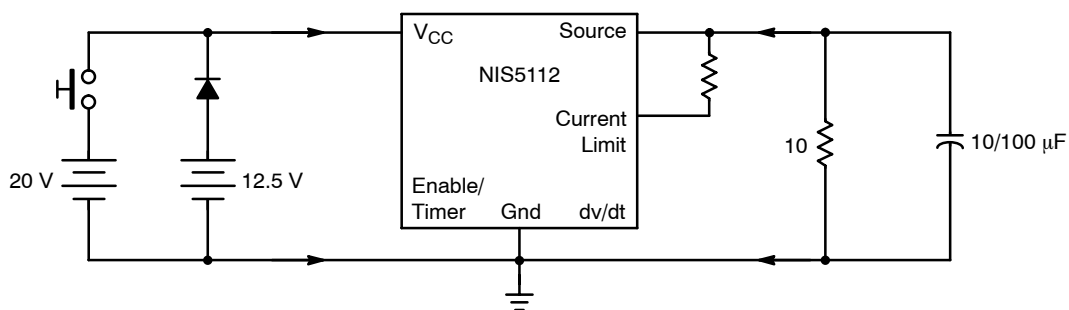


Figure 1. Positive Transient Test Circuit

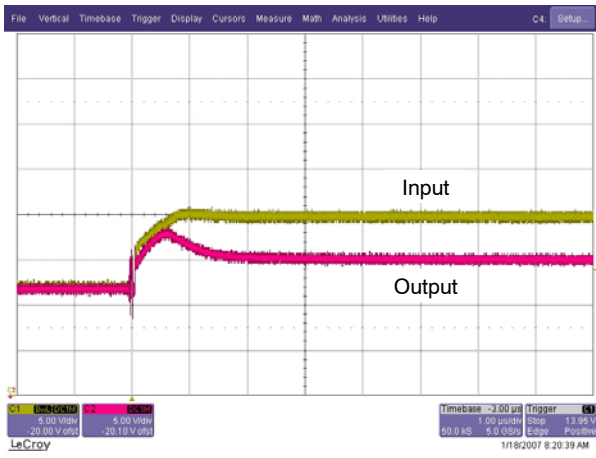


Figure 2. Pos Transient, 12 V to 20 V, 10 µF cap

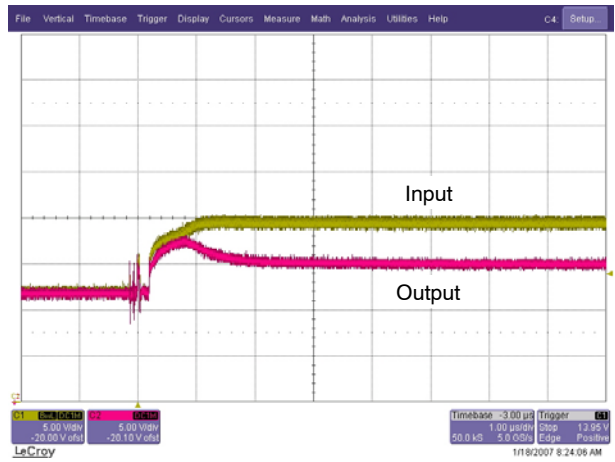


Figure 3. Pos Transient, 12 V to 20 V, 100 µF cap

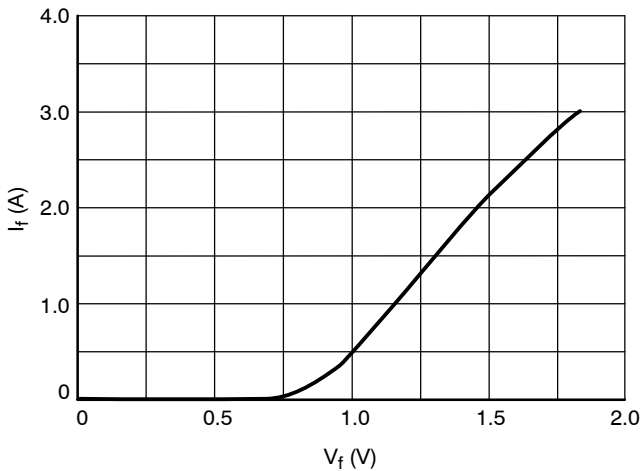


Figure 4. Reverse Transient VI Characteristics. Pulse Test

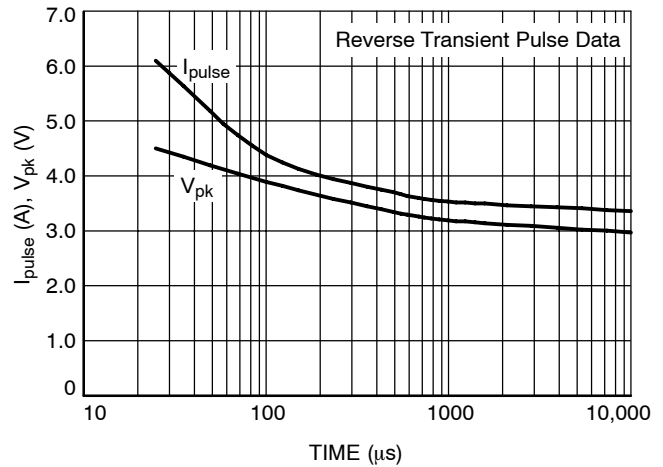


Figure 5. Maximum Allowable Reverse Current Pulse and Associated Peak Voltage

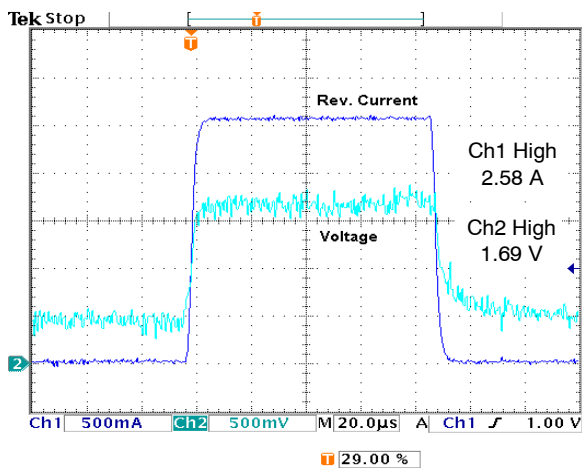


Figure 6. 2.6 A Pulse Waveforms

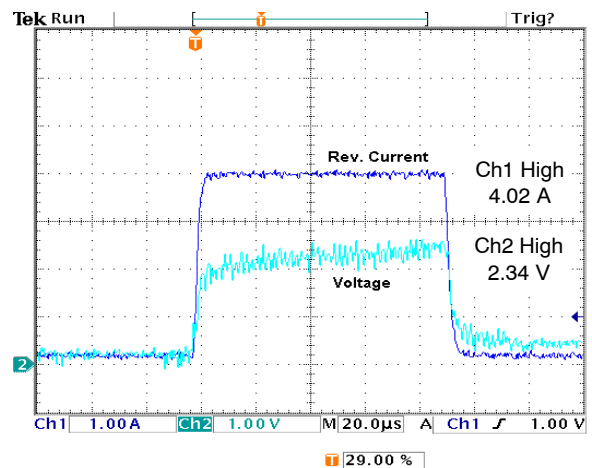


Figure 7. 4.0 A Pulse Waveforms

ON Semiconductor and **ON** are registered trademarks of Semiconductor Components Industries, LLC (SCILLC). SCILLC reserves the right to make changes without further notice to any products herein. SCILLC makes no warranty, representation or guarantee regarding the suitability of its products for any particular purpose, nor does SCILLC assume any liability arising out of the application or use of any product or circuit, and specifically disclaims any and all liability, including without limitation special, consequential or incidental damages. "Typical" parameters which may be provided in SCILLC data sheets and/or specifications can and do vary in different applications and actual performance may vary over time. All operating parameters, including "Typicals" must be validated for each customer application by customer's technical experts. SCILLC does not convey any license under its patent rights nor the rights of others. SCILLC products are not designed, intended, or authorized for use as components in systems intended for surgical implant into the body, or other applications intended to support or sustain life, or for any other application in which the failure of the SCILLC product could create a situation where personal injury or death may occur. Should Buyer purchase or use SCILLC products for any such unintended or unauthorized application, Buyer shall indemnify and hold SCILLC and its officers, employees, subsidiaries, affiliates, and distributors harmless against all claims, costs, damages, and expenses, and reasonable attorney fees arising out of, directly or indirectly, any claim of personal injury or death associated with such unintended or unauthorized use, even if such claim alleges that SCILLC was negligent regarding the design or manufacture of the part. SCILLC is an Equal Opportunity/Affirmative Action Employer. This literature is subject to all applicable copyright laws and is not for resale in any manner.

PUBLICATION ORDERING INFORMATION

LITERATURE FULFILLMENT:

Literature Distribution Center for ON Semiconductor
P.O. Box 5163, Denver, Colorado 80217 USA
Phone: 303-675-2175 or 800-344-3860 Toll Free USA/Canada
Fax: 303-675-2176 or 800-344-3867 Toll Free USA/Canada
Email: orderlit@onsemi.com

N. American Technical Support: 800-282-9855 Toll Free
USA/Canada
Europe, Middle East and Africa Technical Support:
Phone: 421 33 790 2910
Japan Customer Focus Center
Phone: 81-3-5773-3850

ON Semiconductor Website: www.onsemi.com
Order Literature: <http://www.onsemi.com/orderlit>

For additional information, please contact your local
Sales Representative