

ON Semiconductor

Is Now

onsemi™

To learn more about onsemi™, please visit our website at
www.onsemi.com

onsemi and **onsemi** and other names, marks, and brands are registered and/or common law trademarks of Semiconductor Components Industries, LLC dba "**onsemi**" or its affiliates and/or subsidiaries in the United States and/or other countries. **onsemi** owns the rights to a number of patents, trademarks, copyrights, trade secrets, and other intellectual property. A listing of **onsemi** product/patent coverage may be accessed at www.onsemi.com/site/pdf/Patent-Marking.pdf. **onsemi** reserves the right to make changes at any time to any products or information herein, without notice. The information herein is provided "as-is" and **onsemi** makes no warranty, representation or guarantee regarding the accuracy of the information, product features, availability, functionality, or suitability of its products for any particular purpose, nor does **onsemi** assume any liability arising out of the application or use of any product or circuit, and specifically disclaims any and all liability, including without limitation special, consequential or incidental damages. Buyer is responsible for its products and applications using **onsemi** products, including compliance with all laws, regulations and safety requirements or standards, regardless of any support or applications information provided by **onsemi**. "Typical" parameters which may be provided in **onsemi** data sheets and/or specifications can and do vary in different applications and actual performance may vary over time. All operating parameters, including "Typicals" must be validated for each customer application by customer's technical experts. **onsemi** does not convey any license under any of its intellectual property rights nor the rights of others. **onsemi** products are not designed, intended, or authorized for use as a critical component in life support systems or any FDA Class 3 medical devices or medical devices with a same or similar classification in a foreign jurisdiction or any devices intended for implantation in the human body. Should Buyer purchase or use **onsemi** products for any such unintended or unauthorized application, Buyer shall indemnify and hold **onsemi** and its officers, employees, subsidiaries, affiliates, and distributors harmless against all claims, costs, damages, and expenses, and reasonable attorney fees arising out of, directly or indirectly, any claim of personal injury or death associated with such unintended or unauthorized use, even if such claim alleges that **onsemi** was negligent regarding the design or manufacture of the part. **onsemi** is an Equal Opportunity/Affirmative Action Employer. This literature is subject to all applicable copyright laws and is not for resale in any manner. Other names and brands may be claimed as the property of others.

Use of MC33161 Pspice Model

Prepared by: Gang Chen
ON Semiconductor



ON Semiconductor®

<http://onsemi.com>

APPLICATION NOTE

Overview

The MC33161 is a universal voltage monitor intended for use in a wide variety of voltage sensing applications. This device offers the circuit designer an economical solution for positive and negative voltage detection. The circuit consists of two comparator channels each with hysteresis, a unique Mode Select Input for channel programming, a pinned out 2.54 V reference, and two open collector outputs capable of sinking in excess of 10 mA. Each comparator channel can be configured as either inverting or non-inverting by the Mode Select Input. This allows over, under, and window detection

of positive and negative voltages. The minimum supply voltage needed for these devices to be fully functional is 2.0 V for positive voltage sensing and 4.0 V for negative voltage sensing.

To provide simulation results and initial design of system parameters before a real board design in applications, a simulation model of the MC33161 in Pspice has been developed. Figure 1 shows a typical simulation circuit with the MC33161 model. This simulation note is to illustrate a simulation procedure with the MC33161 Pspice model.

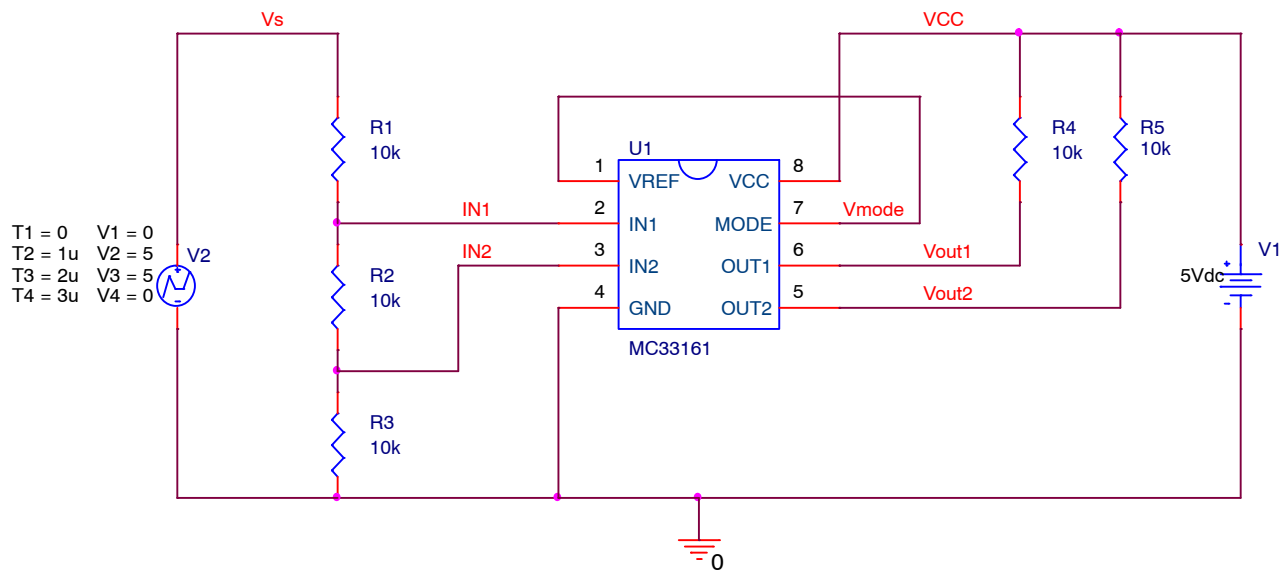


Figure 1. Typical Simulation Circuit with MC33161 Pspice Model

DETAILED DESCRIPTION

Download Pspice Model

Users can download the Pspice model of the MC33161 from ON Semiconductor website, which is a zipped file “MC33161_Pspice.ZIP” including one Pspice model lib file “MC33161_Pspice.LIB”, one schematic symbol olb file “MC33161_Pspice.OLB”, and one design dsn file “MC33161_Pspice.DSN”. Save all the extracted files in a folder.

Model Installation

1. Create New Project

Users need to run ORCAD Capture or Allegro Design Entry CIS first, and then create a new blank project in Capture as shown in Figure 2.

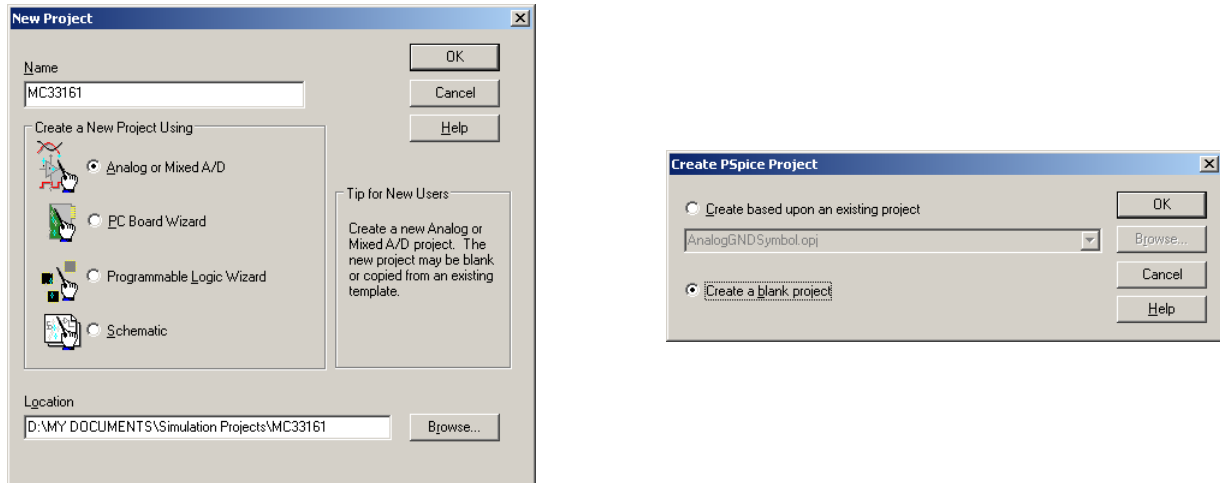


Figure 2. Create New Blank Simulation Project

2. Import Design File

Add the design file “MC33161_ABM.DSN” into the Design Resources to replace the blank design.

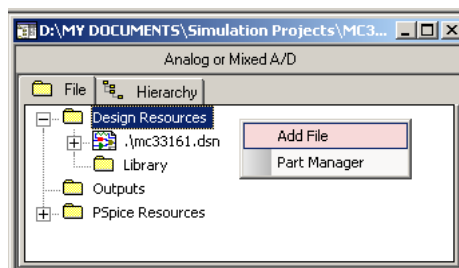


Figure 3. Import Design File into Design Resources

3. Import Symbol File

Add the symbol file “MC33161_ABM.OLB” into the Design Resources as shown in Figure 4.

AND9005/D

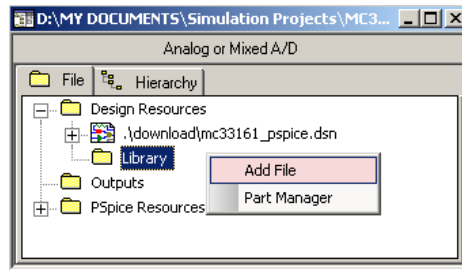


Figure 4. Import Symbol File into Design Resources

4. Open Schematic

Open the schematic “Page 1” in the “Schematic1” under the design file as shown in Figure 5. Users can edit the schematic according to real applications. A DC source “V2” is employed to simulate the monitored power rail.

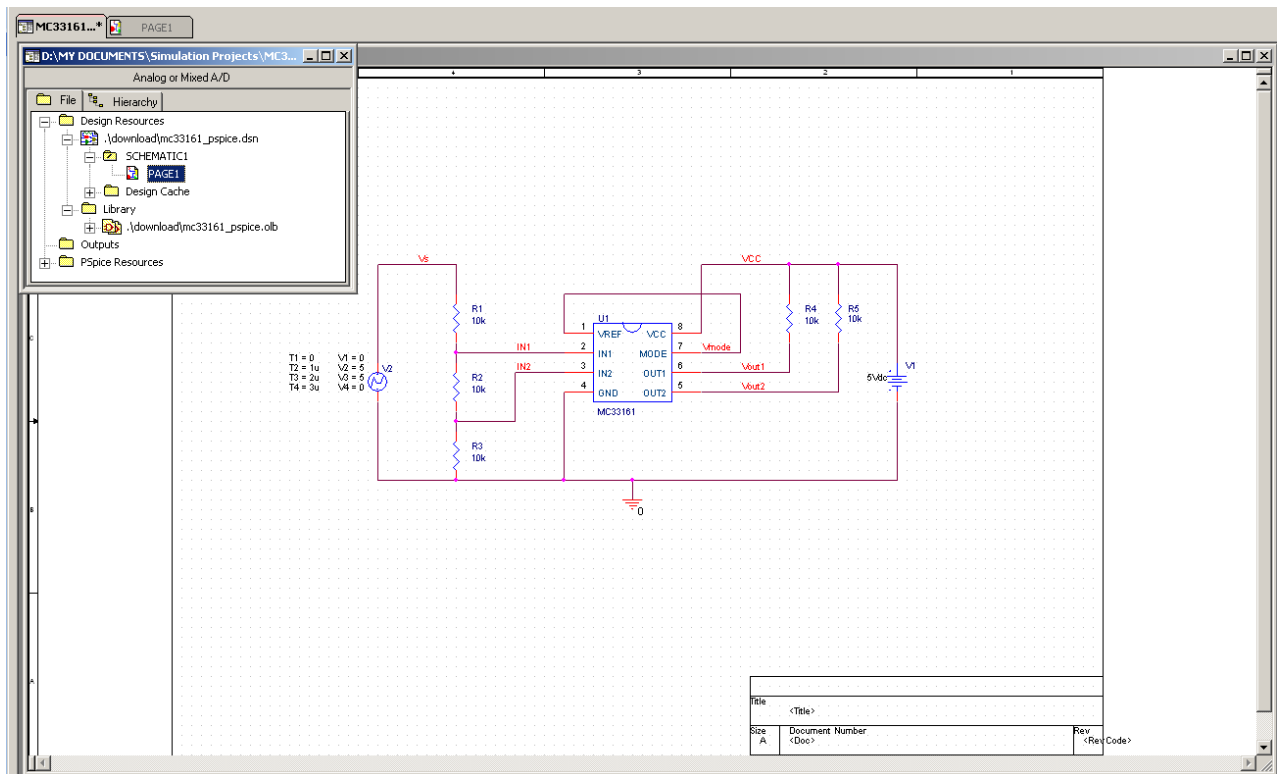


Figure 5. Open Schematic in Design File

5. Create Simulation Profile and Run Simulations

In order to run simulations, a new simulation profile has to be created. In the simulation setting of the simulation profile, users need to use browser to add the Pspice lib file “MC33161_ABMLIB” into the design library of the simulation configuration files, as shown in Figure 7.

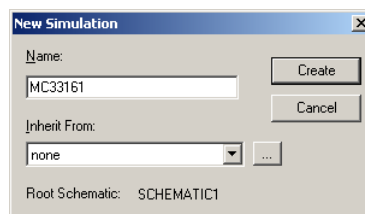


Figure 6. Create a New Simulation Profile

AND9005/D

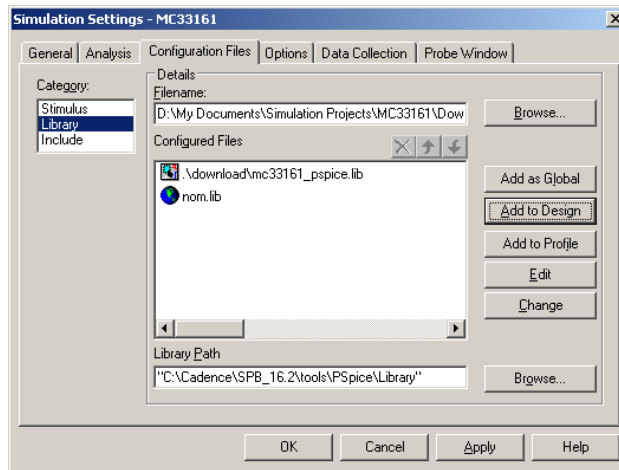


Figure 7. Add Pspice LIB File into Library of Configuration Files

A typical time-domain simulation profile setting is shown in Figure 8. Users can review simulation waveforms in Pspice A/D after running a simulation. Figure 9 shows an example of the simulation results.

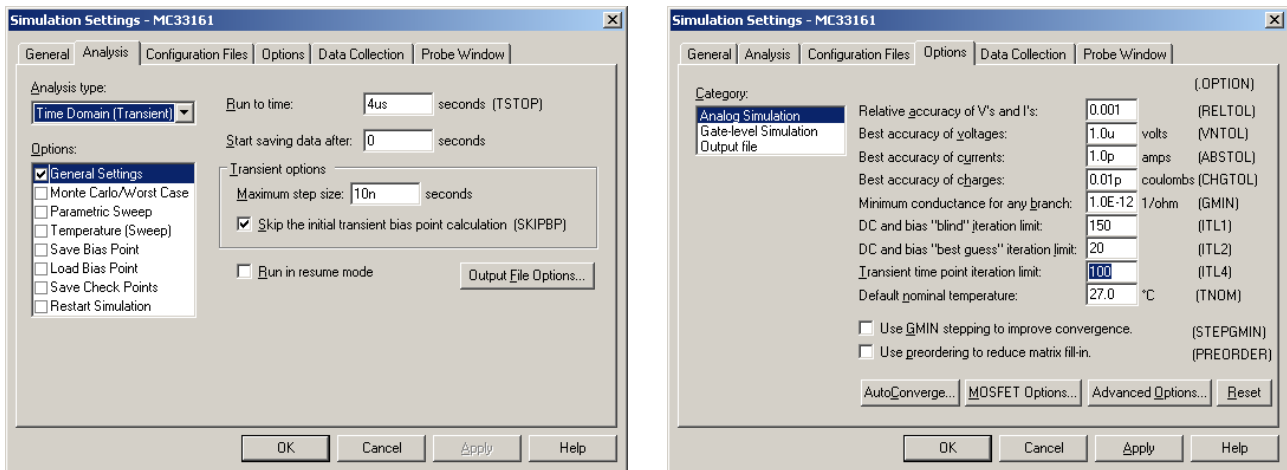


Figure 8. Simulation Setting for Time Domain Simulation

AND9005/D

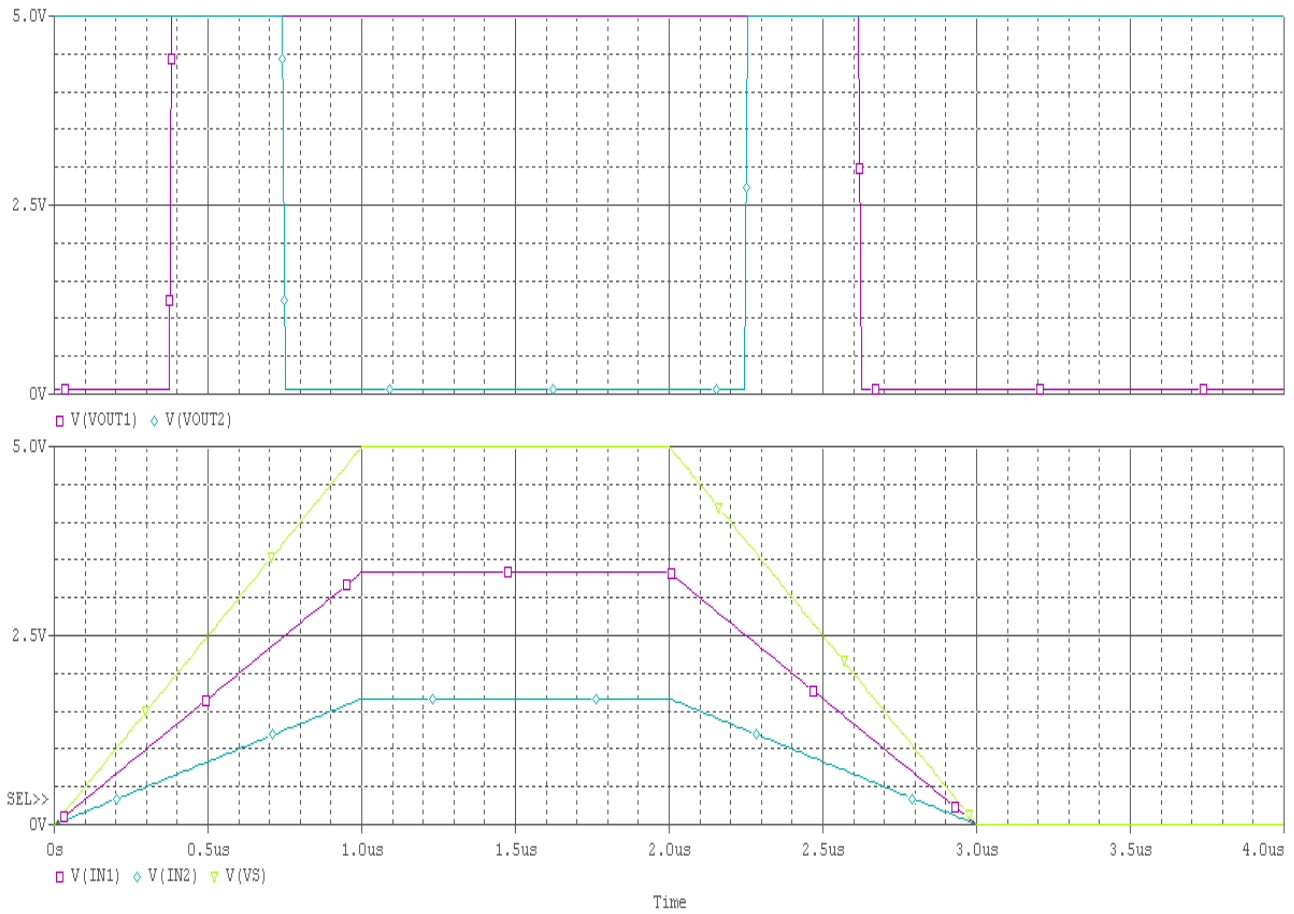


Figure 9. Typical Simulation Results of Time Domain Transient Simulation

ON Semiconductor and **ON** are registered trademarks of Semiconductor Components Industries, LLC (SCILLC). SCILLC reserves the right to make changes without further notice to any products herein. SCILLC makes no warranty, representation or guarantee regarding the suitability of its products for any particular purpose, nor does SCILLC assume any liability arising out of the application or use of any product or circuit, and specifically disclaims any and all liability, including without limitation special, consequential or incidental damages. "Typical" parameters which may be provided in SCILLC data sheets and/or specifications can and do vary in different applications and actual performance may vary over time. All operating parameters, including "Typicals" must be validated for each customer application by customer's technical experts. SCILLC does not convey any license under its patent rights nor the rights of others. SCILLC products are not designed, intended, or authorized for use as components in systems intended for surgical implant into the body, or other applications intended to support or sustain life, or for any other application in which the failure of the SCILLC product could create a situation where personal injury or death may occur. Should Buyer purchase or use SCILLC products for any such unintended or unauthorized application, Buyer shall indemnify and hold SCILLC and its officers, employees, subsidiaries, affiliates, and distributors harmless against all claims, costs, damages, and expenses, and reasonable attorney fees arising out of, directly or indirectly, any claim of personal injury or death associated with such unintended or unauthorized use, even if such claim alleges that SCILLC was negligent regarding the design or manufacture of the part. SCILLC is an Equal Opportunity/Affirmative Action Employer. This literature is subject to all applicable copyright laws and is not for resale in any manner.

PUBLICATION ORDERING INFORMATION

LITERATURE FULFILLMENT:
 Literature Distribution Center for ON Semiconductor
 P.O. Box 5163, Denver, Colorado 80217 USA
Phone: 303-675-2175 or 800-344-3860 Toll Free USA/Canada
Fax: 303-675-2176 or 800-344-3867 Toll Free USA/Canada
Email: orderlit@onsemi.com

N. American Technical Support: 800-282-9855 Toll Free
 USA/Canada
Europe, Middle East and Africa Technical Support:
 Phone: 421 33 790 2910
Japan Customer Focus Center
 Phone: 81-3-5773-3850

ON Semiconductor Website: www.onsemi.com
Order Literature: <http://www.onsemi.com/orderlit>

For additional information, please contact your local Sales Representative