

ON Semiconductor

Is Now

onsemi™

To learn more about onsemi™, please visit our website at
www.onsemi.com

onsemi and **onsemi** and other names, marks, and brands are registered and/or common law trademarks of Semiconductor Components Industries, LLC dba "**onsemi**" or its affiliates and/or subsidiaries in the United States and/or other countries. **onsemi** owns the rights to a number of patents, trademarks, copyrights, trade secrets, and other intellectual property. A listing of **onsemi** product/patent coverage may be accessed at www.onsemi.com/site/pdf/Patent-Marking.pdf. **onsemi** reserves the right to make changes at any time to any products or information herein, without notice. The information herein is provided "as-is" and **onsemi** makes no warranty, representation or guarantee regarding the accuracy of the information, product features, availability, functionality, or suitability of its products for any particular purpose, nor does **onsemi** assume any liability arising out of the application or use of any product or circuit, and specifically disclaims any and all liability, including without limitation special, consequential or incidental damages. Buyer is responsible for its products and applications using **onsemi** products, including compliance with all laws, regulations and safety requirements or standards, regardless of any support or applications information provided by **onsemi**. "Typical" parameters which may be provided in **onsemi** data sheets and/or specifications can and do vary in different applications and actual performance may vary over time. All operating parameters, including "Typicals" must be validated for each customer application by customer's technical experts. **onsemi** does not convey any license under any of its intellectual property rights nor the rights of others. **onsemi** products are not designed, intended, or authorized for use as a critical component in life support systems or any FDA Class 3 medical devices or medical devices with a same or similar classification in a foreign jurisdiction or any devices intended for implantation in the human body. Should Buyer purchase or use **onsemi** products for any such unintended or unauthorized application, Buyer shall indemnify and hold **onsemi** and its officers, employees, subsidiaries, affiliates, and distributors harmless against all claims, costs, damages, and expenses, and reasonable attorney fees arising out of, directly or indirectly, any claim of personal injury or death associated with such unintended or unauthorized use, even if such claim alleges that **onsemi** was negligent regarding the design or manufacture of the part. **onsemi** is an Equal Opportunity/Affirmative Action Employer. This literature is subject to all applicable copyright laws and is not for resale in any manner. Other names and brands may be claimed as the property of others.



A 3.3-V/20-A Active Clamp DC-DC Converter with NCP1565

ON Semiconductor®

<http://onsemi.com>

APPLICATION NOTE

The NCP1565 is a new high-performance voltage or peak-current mode control integrated circuit dedicated to active-clamp forward converters. Designed in a BiCMOS process, the part can switch up to several MHz and offers everything needed to build rugged and cost-effective dc-dc converters for the telecommunication market. Available in a QFN package, the part will equally work well with a self-driven synchronous rectified output stage or with dedicated drivers such as the new NCP81178. This application note describes the part implemented in a 3.3-V/20-A quarter brick dc-dc converter implementing self-driven synchronous MOSFETs.

General Description

The part initial power is given by a high-voltage current source delivering up to 40 mA as a guaranteed minimum current across the allowed temperature range. Once connected to the input rail, the current source charges the V_{CC} capacitor and lifts its positive terminal to the controller start-up voltage, 9.5 V. At this point, the source turns off and the part begins to initialize. During this short period of time, there are no output pulses. In case V_{CC} falls down to 9.4 V the current source is turned on again and maintains V_{CC} between 9.5/9.4 V in a hysteretic way. This is a so-called Dynamic Self-Supply (DSS) operation.

Once all internal flags are cleared, the current source is turned off and the soft-start pin is released. When the soft-start (SS) voltage passes 1.35 V, the main drive output, OUTM, starts to pulse. Please note that OUTA was already pulled high at V_{CC} equals 9.5 V to pre-charge the active clamp P-channel negative bias circuitry. Figure 1 shows a typical power-on sequence in which the UVLO filter delays the switching operations. Please note the DSS mode until the UVLO level gives the green light to pulse. The small leap on the UVLO signal illustrates the hysteresis action.

Figure 2 offers a different view of the start-up sequence and in particular, the duty ratio evolution along the soft-start rising voltage. Please note that pulses appear after the SS voltage exceeds 1.35 V.

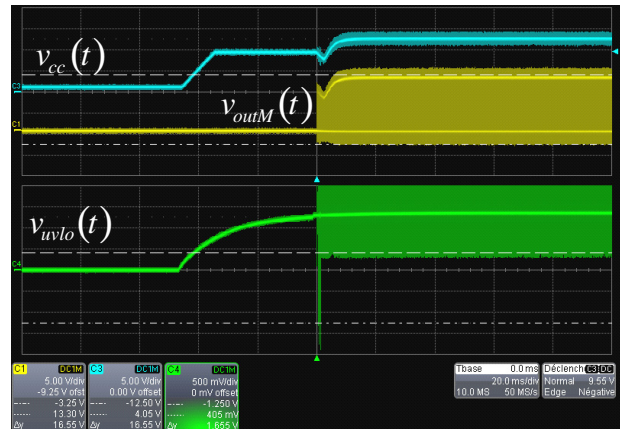


Figure 1. A Typical Power-on Sequence where the UVLO Time Constant Dictates the Moment at which the Part Starts to Pulse

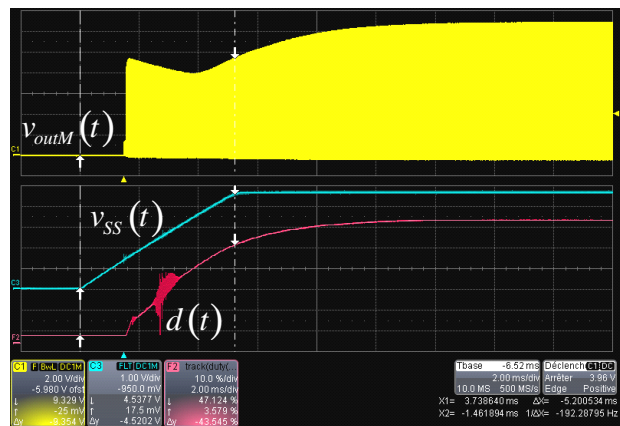


Figure 2. It is Possible to Monitor the Duty Ratio Evolution During the Soft-start Sequence

In this example, the auxiliary winding takes over after several switching cycles. In case it does not happen, e.g. because the primary-side rectification diode is broken, the current source will reactivate and will maintain the V_{CC} voltage, self-supplying the controller until a proper auxiliary voltage takes over. It is important to insist on power dissipation in this mode as the current absorbed by the high-voltage pin (22) is roughly the average current consumed by the part. This current depends on the part internal consumption and the driver current. The part, alone, consumes around 5 mA. Assume you drive a 50-nC Q_G MOSFET at a 300-kHz switching frequency. In this case, the current consumed from the driver is

$$I_{drv} = F_{SW} \cdot Q_G = 300k \cdot 50n = 15 \text{ mA} \quad (\text{eq. 1})$$

which added to the 5-mA consumption makes 20 mA. If the part is biased from a 72-V dc source, the controller will roughly dissipate 1.5 W. Needless to say that in lack of a wide and thick dissipative copper area, the part temperature will quickly rise, potentially destroying the die as the internal shutdown cannot stop the DSS. For a QFN package mounted on a 4-layer PCB together with a 100-mm² 35- μ m copper area, the junction-to-ambient thermal resistance is evaluated to 48°C/W. If we consider a maximum junction temperature of 110°C at a 70-°C ambient temperature, the part will be able to dissipate a maximum power of

$$P_{max} = \frac{T_{j,max} - T_A}{R_{\theta JA}} = \frac{100 - 70}{48} = 833 \text{ mW} \quad (\text{eq. 2})$$

Therefore, a permanent DSS mode is only acceptable when the part enters skip cycle in a deep no-load discontinuous mode (in lack of synchronous rectification for instance) where the total consumption is reduced via hysteretic operation. The total consumption according to Eq. 2 must remain below

$$I_{DSS,max} = \frac{P_{max}}{V_{in,max}} = \frac{0.833}{72} = 11.6 \text{ mA} \quad (\text{eq. 3})$$

In case the V_{CC} capacitor is purposely selected of small value, the DSS can be solicited for a few tens of ms until the auxiliary takes over at start up. The peak power dissipated in this mode must remain within the package power dissipation capability. In this case, we need the transient thermal resistance $r(t)$ as plotted in the below chart for T_A equals 25°C, a maximum junction temperature of 150°C and an input voltage of 72 V.

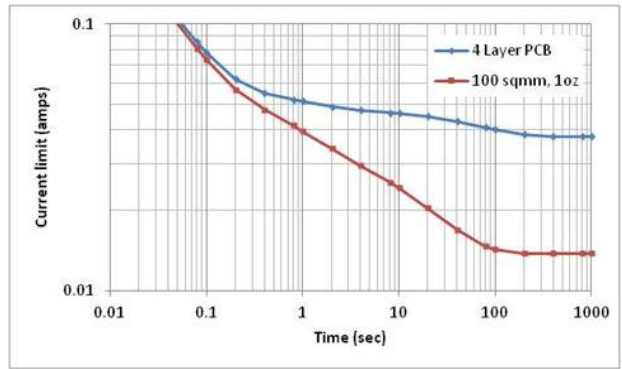


Figure 3. This Transient Thermal Resistance can be Used to Check the Peak Power Capability of the QFN Package. T_A is 25°C for this Chart

The chart tells you that a 50-mA average current can be consumed from the 72-V input during 1 s at a 25-°C ambient temperature. From this value, we can rederive the transient thermal resistance obtained from simulation.

$$r(t) = \frac{150 - 25}{50 \text{ m} \cdot 72} = 34.7^\circ\text{C/W} \quad (\text{eq. 4})$$

Now, at a 70-°C ambient temperature, during 1 s, the maximum power the part will safely dissipate is equal to

$$P_{max} = \frac{150 - 70}{34.7} = 2.3 \text{ W} \quad (\text{eq. 5})$$

or a 32-mA current from the 72-V input line.

The part is able to issue a status via its dual-function dedicated pin, $\overline{\text{FLT/SDN}}$. When observed, the pin is low to signal a problem or a working sequence in progress. As an example, if the soft-start pin is shorted to ground, all pulses are immediately stopped and the fault is signaled via the assertion of the $\overline{\text{FLT/SDN}}$ pin. This is what you can see in Figure 4.

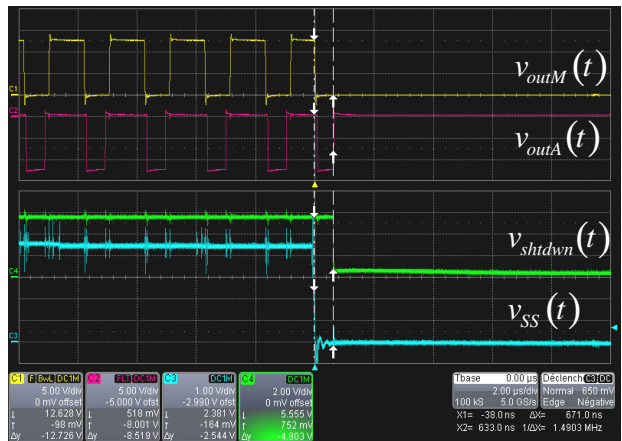


Figure 4. If the SS Pin is Shorted to Ground, All Pulses are Stopped and the FLT/SDN is Asserted Low to Signal the Fault

NCP1565 includes a protection against short circuit or overload that is of auto recovery nature. An internal circuitry reconstructs the dc output current by sampling and averaging the primary-side current during the on time. When this voltage image exceeds 300 mV, the capacitor connected to the RES pin (restart), begins to charge with a 20- μ A current source. While charging, should the detected fault disappear, e.g. the voltage on the CS pin passes below 300 mV, the 20- μ A current source stops and the capacitor is discharged via a 5- μ A source to ground. When the fault comes back, charging resumes and the capacitor voltage grows. When touching the 1-V threshold, all pulses stop and the part remains silent for 32 charge/discharge cycles of the RES capacitor. This is what Figure 5 illustrates. At the end of the 32 cycles, the part attempts to re-start but if the fault it still present, hiccup continues. Should the fault disappear, the converter will resume operations.

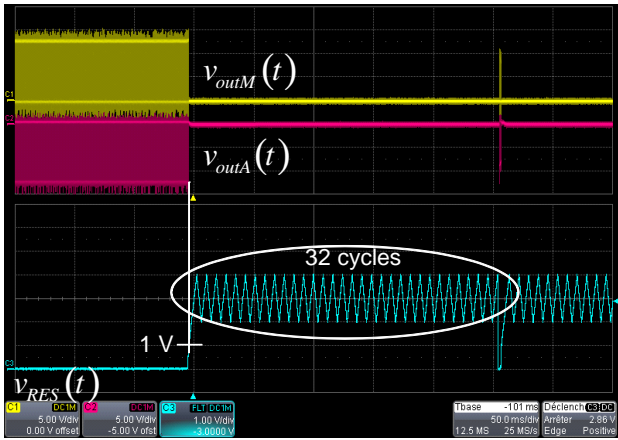


Figure 5. The Part Enters a Safe Auto-recovery Hiccup Mode when a Fault is Detected

The controller also hosts a pulse-by-pulse current limit set to 450 mV which terminates a pulse in progress in case this limit is exceeded. Finally, in case an overcurrent is sensed for two consecutive clock cycles, e.g. because the secondary-side winding is accidentally shorted, the part immediately stops and enters the auto-restart mode.

An important feature of NCP1565 lies in its capability to adjust the dead time in relationship to the load and the input voltage. As the load is getting lighter, the dead time will expand to help reach quasi ZVS at turn on. At full load, it is difficult to switch on again at a drain voltage below V_{in} . This is because the magnetizing current conflicts with the reflected output current $N \cdot i_L(t)$ that appears in the primary side as soon as the drain drops below V_{in} . In light load, however, as I_{out} has decreased, it is possible to force the drain fall well below V_{in} . The adaptive dead time helps

reaching this goal, significantly improving the situation in moderate to light load conditions.

Loop control requires current injection in the feedback pin. Injecting current reduces the duty ratio. When this current exceeds 850 μ A, the duty ratio hits 0% and the controller skips cycles. With a synchronous rectifier, this situation never happens since the output inductor current remains continuous, even in a no-load situation. The duty ratio will remain almost constant across the load range at a given input voltage. On the opposite, with a classical set of diodes in the secondary side, Discontinuous Conduction Mode (DCM) will happen in light or no-load operation. This situation will naturally induce skip cycle operation in the primary side.

In presence of narrow pulses randomly distributed, typical of skip operation, it is very likely that the auxiliary V_{CC} collapses. In this case, the internal DSS will take over and maintain the controller dc supply around 7.5 V. As this operation can last a certain time, it is the designer duty to make sure that the average power dissipation in worst case (high input voltage, highest MOSFET Q_G), keeps the controller die temperature below a safe limit. Figure 6 displays a typical operation when skip cycle is entered in no-load ($V_{in} = 36$ V, $I_{out} = 0$ A)

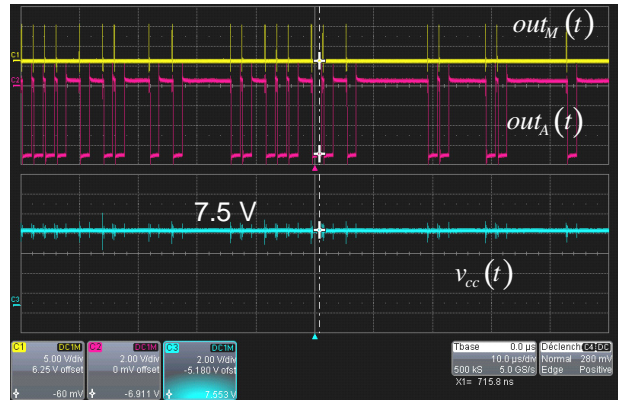


Figure 6. In Skip Mode, the DSS Takes Over the V_{CC} Rail which Collapses Given Narrow Drive Pulses

The Application Circuit

We have designed a 500-kHz 36-72-V dc-dc converter delivering 3.3 V with a nominal output current of 20 A. Over current cutoff happens at I_{out} is 25 A in our prototype. The board is laid out to a quarter brick dimensions and its electric plugs are compatible with off-the-shelf modules.

The primary side section appears in Figure 7 while the secondary side is drawn in Figure 8.

AND9173/D

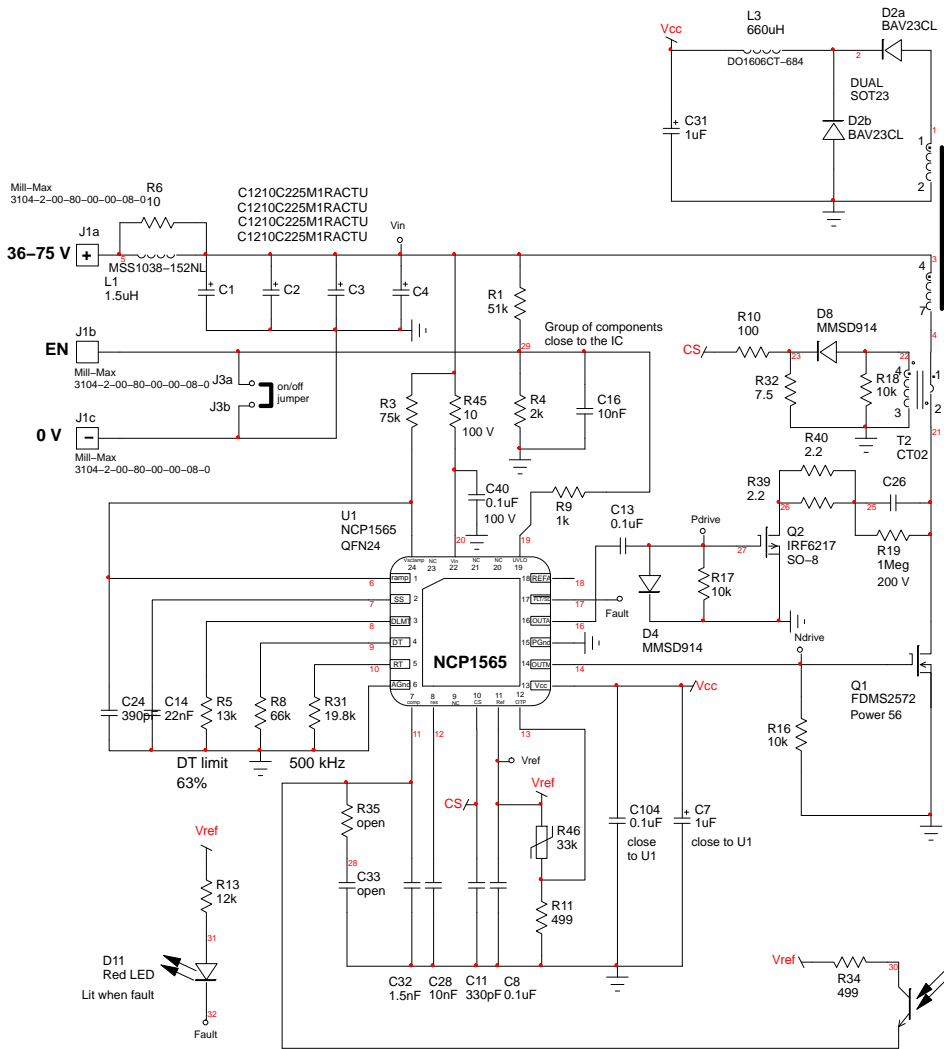


Figure 7. The Primary Side of the Active-clamp Forward Uses a P-channel Transistor

The input line first goes through an EMI filter made of a simple damped LC filter. Some resonance can occur at high frequency and potentially affect the transfer function in a wide-bandwidth design. Damping is possible via the addition of a large electrolytic capacitor connected across $C_{1,2,3,4}$. As its ESR is naturally larger than that of the Multi-Layer Capacitors (MLC), it will provide an efficient natural ac damping. Check that its ESR changes at high temperature are still compatible with the required damping. Damping can also be provided by the parallel resistor R_6 . The input voltage splits in several paths then:

- One goes to the controller VIN pin. It biases the DSS circuitry and provides energy to the chip a) at start up b) when the auxiliary winding disappears in deep DCM. Please note the insertion of a small RC network made of $R_{45}C_{40}$ that provides additional filtering in case of surge events.
- The second undergoes a division by R_1/R_4 to feed the controller undervoltage lockout pin. You will adjust this

level to define the input voltage at which the converter starts to pulse and the level at which it stops.

The formulas are as follows:

$$R_{upper} = \frac{V_{on} - V_{off}}{I_{hyst}} \quad (\text{eq. 6})$$

$$R_{lower} = \frac{R_{upper} \cdot V_{enable}}{V_{enable} - V_{off}} \quad (\text{eq. 7})$$

For a 34-V turn-on voltage and a turn off at 33 V, the upper and lower resistances (R_1 and R_4) must respectively be 50 k Ω and 1.9 k Ω .

- Another path is the PWM sawtooth generation. The connection of resistance R_3 to the input rail provides natural feedforward operation by modifying C_{24} charging current on the fly as the input voltage varies. This alters the PWM block small-signal gain and helps getting rid of V_{in} in the final transfer function dc gain expression.

AND9173/D

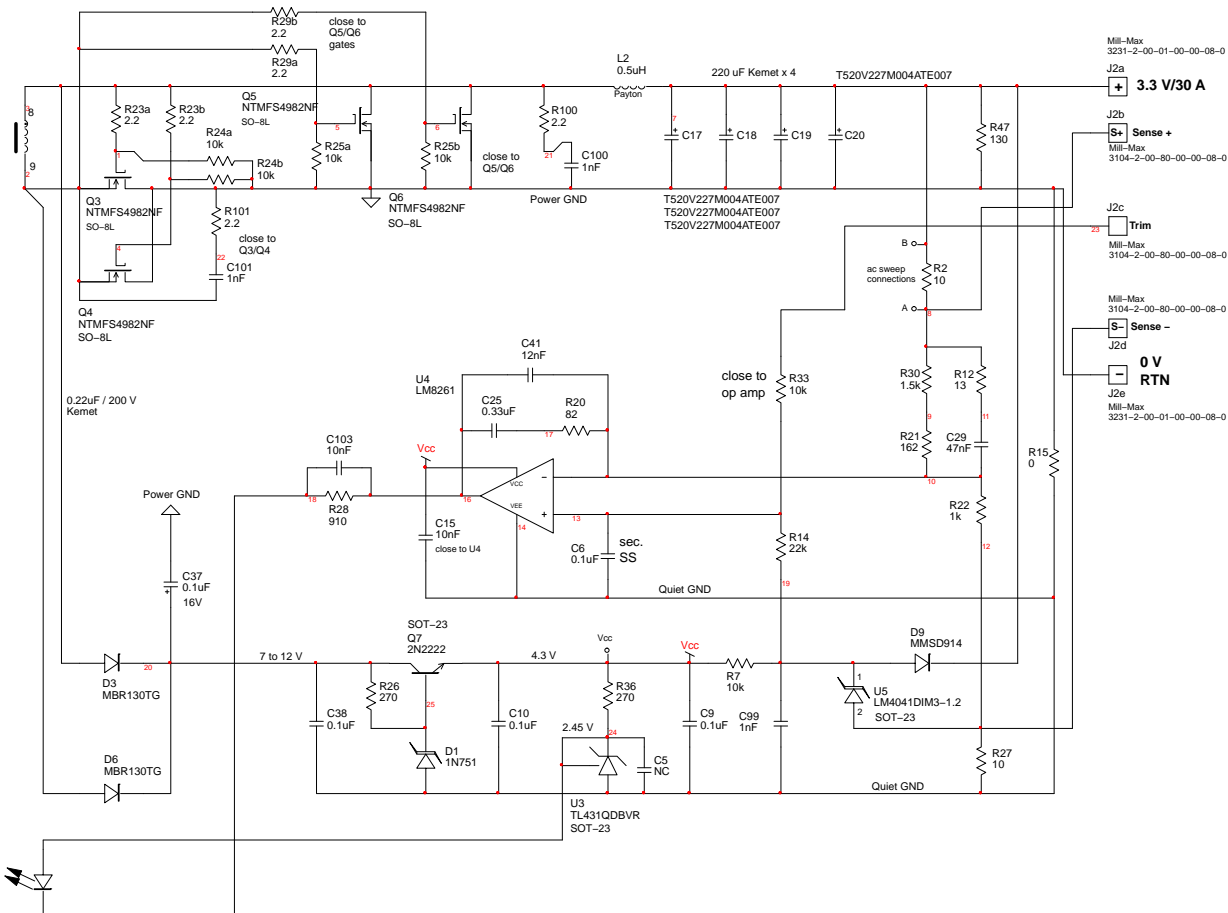
To the controller left, you find all the timing components such as switching frequency and dead time settings. Board layout around these elements is critical and their grounds must return to the controller analog GND via the shortest path.

NCP1565 directly drives one low- $r_{DS(on)}$ MOSFETs Q_1 . The clamp section is built around a P-channel MOSFET Q_2 that is referenced to ground. You could also use an N-channel type and hook it to the upper rail but a more complex driving circuitry would be necessary. The primary-side current sense signal is delivered by transformer T_2 , further demagnetized by D_8 and R_{18} . The auxiliary voltage is provided by a buck converter supplied by the auxiliary winding. Different structures for this auxiliary section can be envisaged without problem.

Synchronous rectification is accomplished by paralleling MOSFETs. Active Clamp Forward (ACF) represents the perfect structure for self-driven rectifiers. By forcing the magnetizing current circulation along the entire switching period, the drive voltage is always present in the secondary side. $2.2\text{-}\Omega$ resistances are inserted in series with the gate signal and damp parasitic elements present in the driving path.

The secondary side implements a type 3 compensator, directly driving the optocoupler LED whose anode goes to a stable voltage. The auxiliary V_{CC} is provided by a simple bipolar ballast whose role is to provide a regulated rail but also a V_{out} ac-decoupled feedback bias for the optocoupler LED. Failure to perfectly ac-isolate this point from V_{out} creates an unwanted fast lane which hampers the phase boost brought by the type 3 arrangement. The bipolar stage brings a first rejection barrier while the added TL431 in active Zener configuration brings rejection further down: the LED ac current must be solely be imposed by the op amp and not by V_{out} . To extend the crossover frequency, we have purposely compensated the optocoupler pole via R_{28} and C_{103} .

The auxiliary V_{CC} is obtained by a direct rectification of forward and flyback voltages. It is important that this auxiliary supply comes up quickly at power on so that the secondary stage takes the lead immediately and imposes a soft voltage output rise through a soft-start on the op amp reference pin.



AND9173/D

For a monotonic output voltage rise, capacitor C_6 and resistance R_{14} soft-start the reference voltage at pin (+) of U_4 . This forces the secondary side to take over control during the start-up sequence and impose the output voltage shape via this network. This is the reason why the auxiliary V_{CC} must come up quickly, hence a rather low value for C_{37} . PCB routing distinguishes two grounds, noisy and quiet

ones, via the $0-\Omega$ series resistor R_{15} . Reference 1 gives details on how to compensate the op amp for a particular crossover frequency selection.

Operational Results

These components have been assembled on a quarter brick 6-layer PCB whose pictures appears in Figure 9.

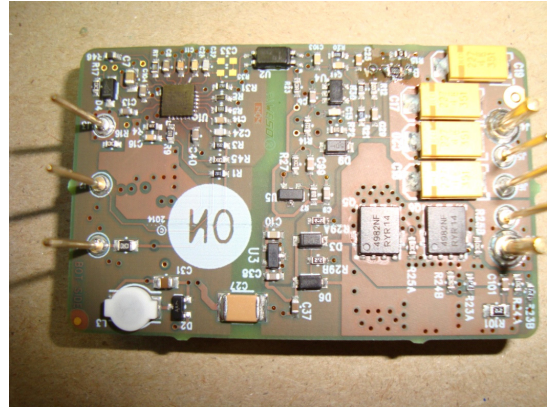
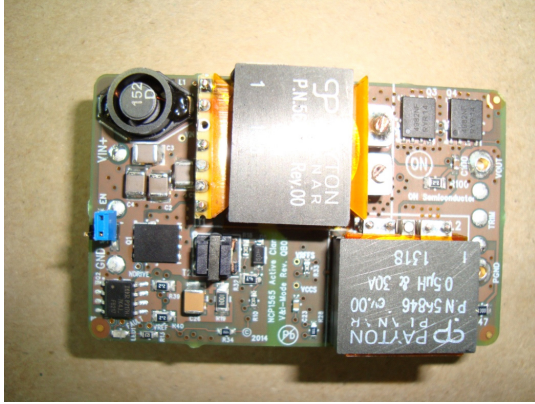


Figure 9. The 100-W Converter Fits in a Compact 6-layer Quarter Brick PCB Size

Below are some operational oscilloscope shots captured at different bias points:

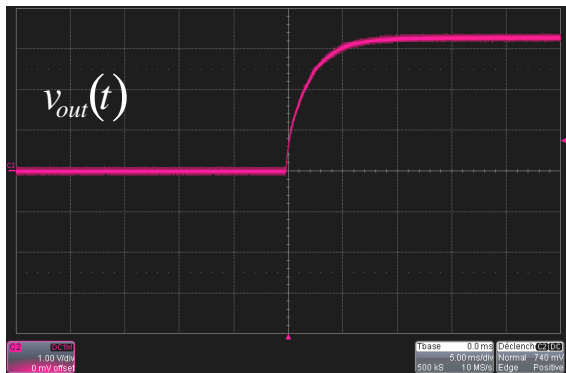


Figure 10. Start-up Sequence at a 20-A Output Current, V_{in} is 48 V

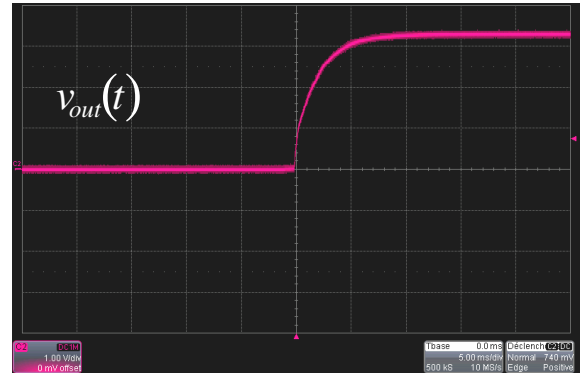
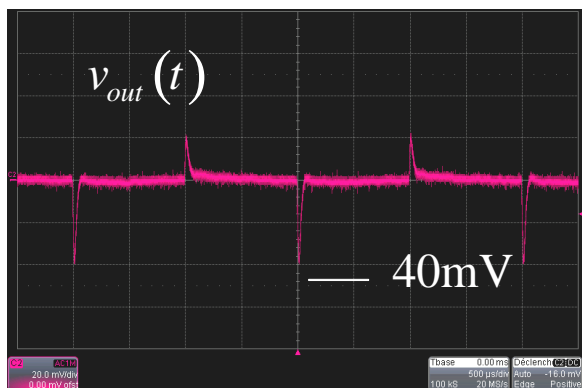
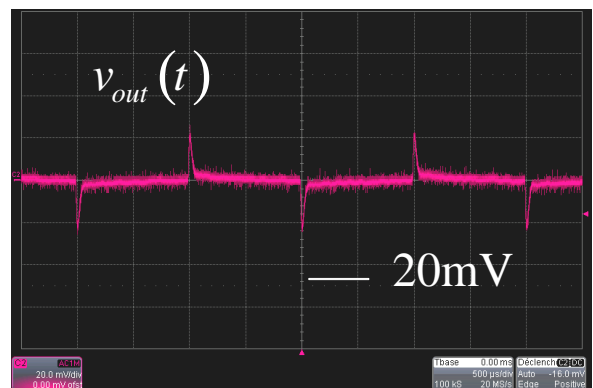


Figure 11. Start-up Sequence at a 0-A Output Current, V_{in} is 48 V



$V_{in} = 36$ V, $I_{out} = 15$ to 20 A, 1 A/ μ s



$V_{in} = 48$ V, $I_{out} = 15$ to 20 A, 1 A/ μ s

Figure 12. Transient Response for Two Different Configurations, Low and Nominal Line

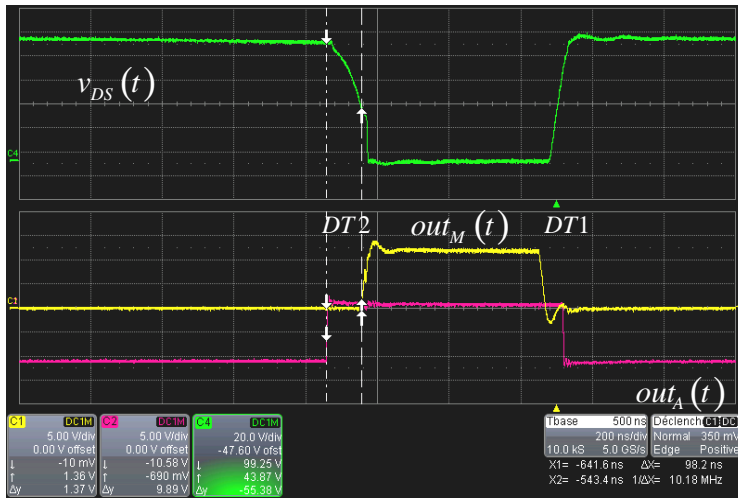


Figure 13. The Adaptive Dead Time Helps Obtain Quasi-ZVS at a Low Operating Current. $V_{in} = 72 V$, $I_{out} = 3 A$

Efficiency results appear below for a constant output current of 20 A:

- $V_{in} = 36 V$ $\eta = 90.88\%$
- $V_{in} = 48 V$ $\eta = 90.65\%$
- $V_{in} = 72 V$ $\eta = 88.65\%$

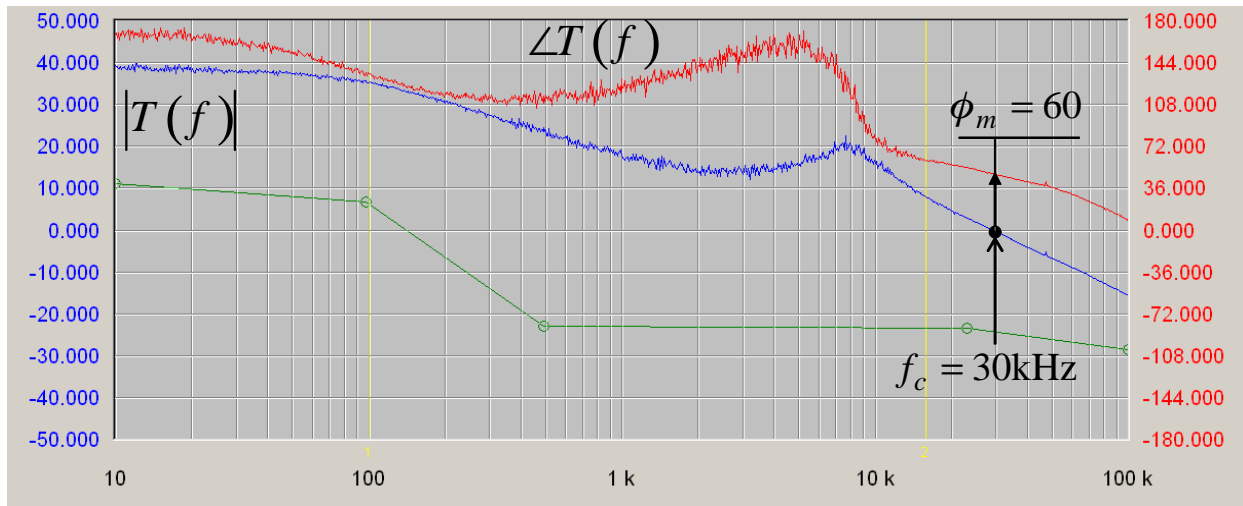


Figure 14. Open-loop AC Sweep at a 36-V Input Voltage. A 30-kHz Crossover Frequency is Measured Together with a 60° Phase Margin

Several open-loop measurements have been performed on this board using the series resistance R_2 across which an ac signal is injected. One typical result at a 36-V input voltage is given in Figure 14 where a comfortable crossover frequency of 30 kHz is observed. The phase margin is also good with 60° with the absence of conditional stability zones.

The author wishes to thank Payton and ICE Components for kindly providing samples for power magnetics and the current sense transformer.

Reference

- [1] Christophe Basso, “Designing Control Loops for Linear and Switching Power Supplies: A Tutorial Guide”, Artech House, Boston 2012, ISBN-13: 978-1-60807-557-7
- [2] <http://www.paytongroup.com/>
- [3] <http://www.icecomponents.com/>

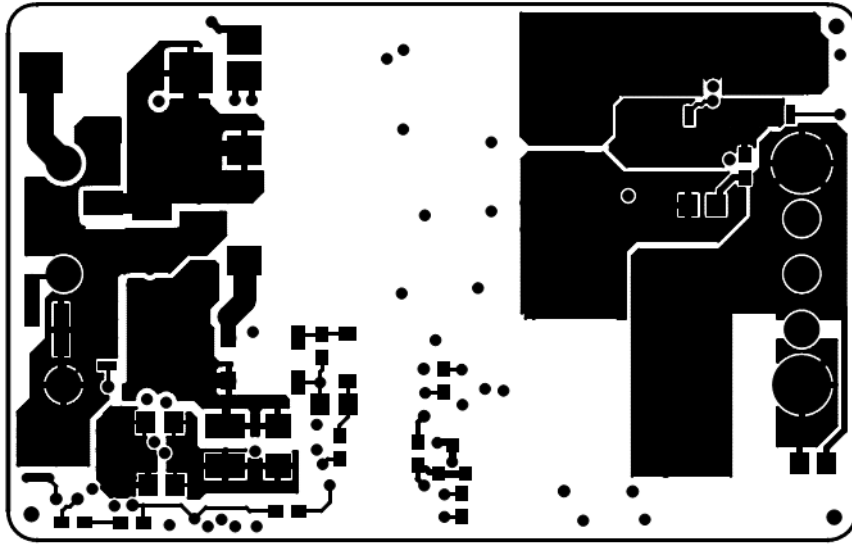


Figure 17. Primary-side Layer 1

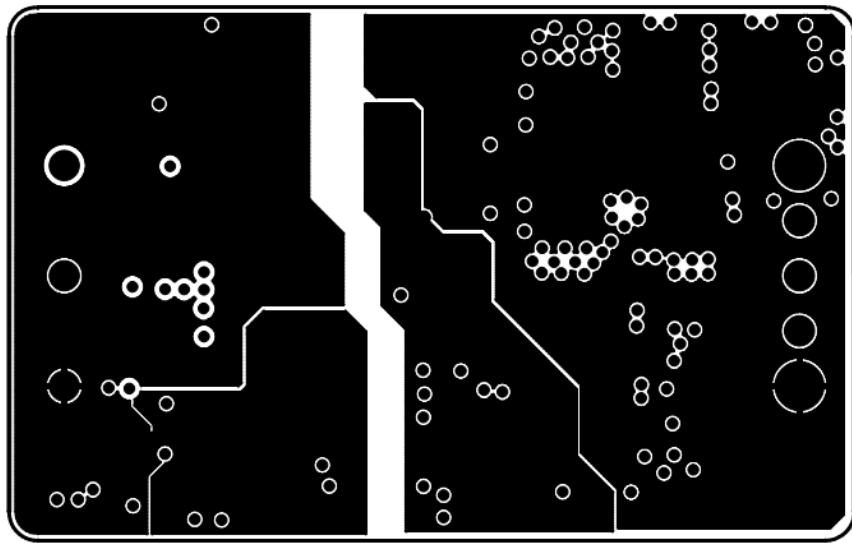


Figure 18. Layer 2, Ground Plane

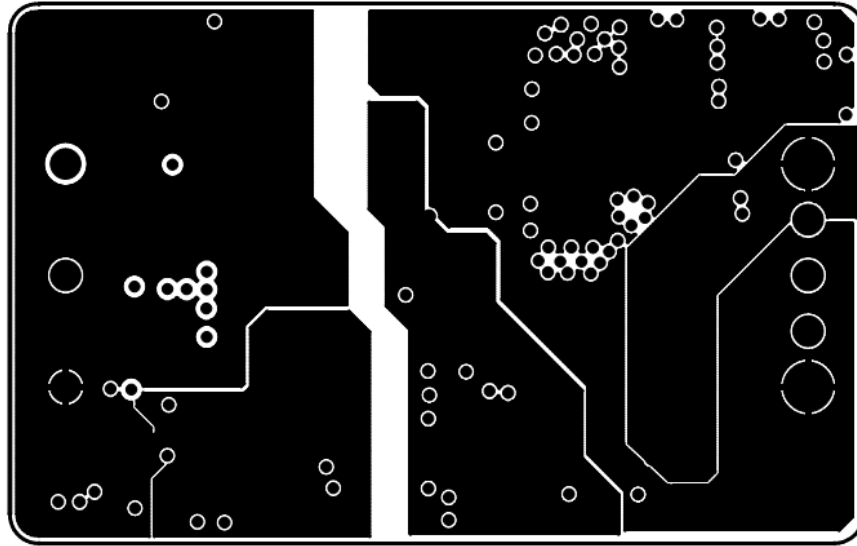


Figure 19. Layer 3, Ground Plane

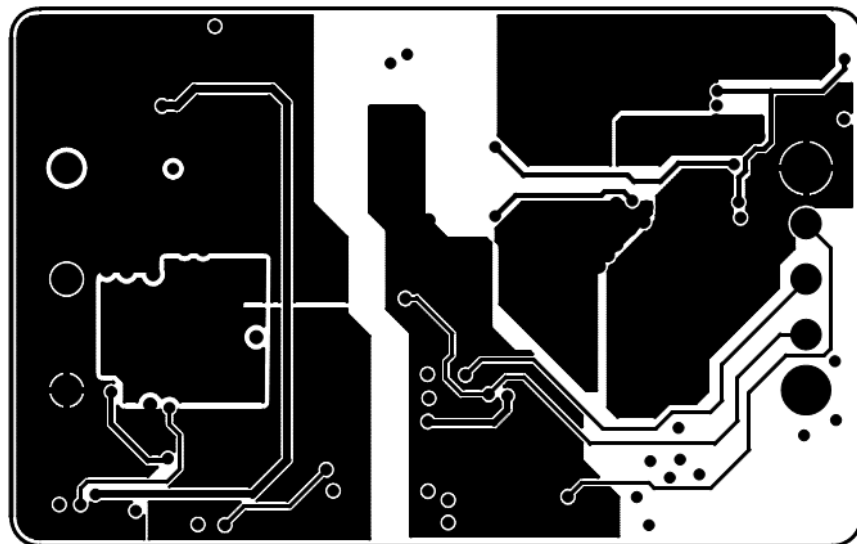


Figure 20. Layer 4, Signal Plane

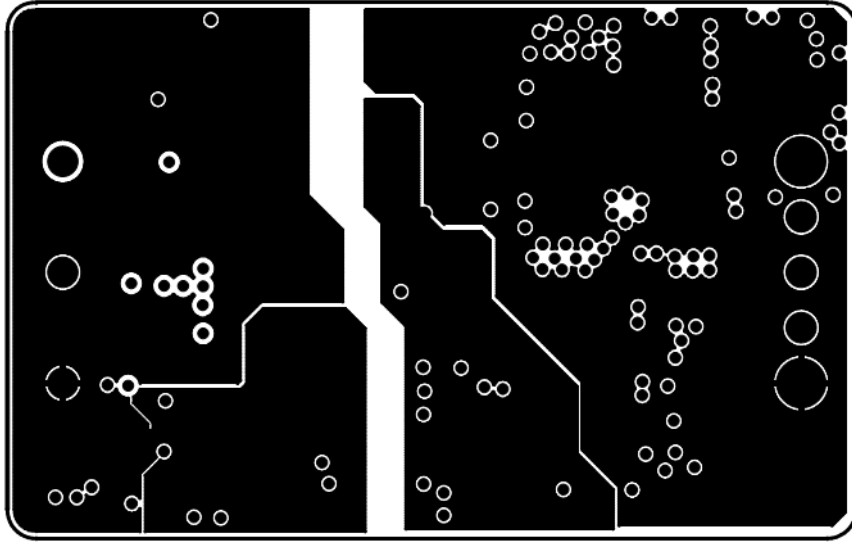


Figure 21. Layer 5, Signal Plane

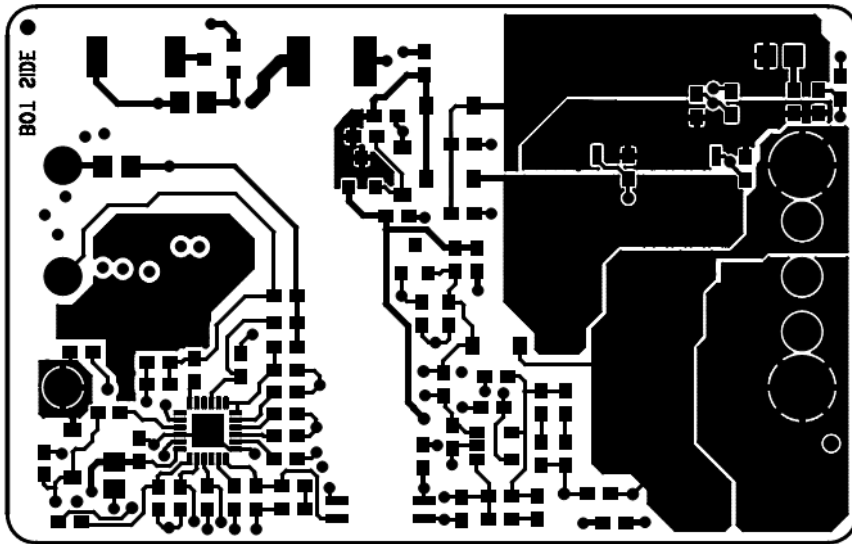


Figure 22. Layer 6, Secondary Side

AND9173/D

BILL OF MATERIALS

Table 1. BILL OF MATERIALS


Designator	Qty.	Description	Value	Tolerance	Rating	Footprint	Manufacturer	Part Number	Substitution Allowed	Comments
C7, C31	2	Capacitor	1 μ F		20 V	805	Yageo	CC0805KKX5R8BB105	Yes	
C26	1	Capacitor	0.22 μ F		200 V	1210	TDK	CGA6M3X7R2E224K200AA	No	
C27	1	Capacitor	2200 pF		2 kV	1812	TDK	C4532X7R3D222K	No	
C1, C2, C3, C4	4	Capacitor	2.2 μ F		100 V	1210	Kemet	C1210C225M1RACTU	No	
C17, C18, C19, C20	4	Capacitor	220 μ F		6.3 V	-	Kemet	T520V227M004ATE007	No	
C6, C8, C9, C13, C37, C38, C40, C104, C10	9	Capacitor	0.1 μ F		50 V	0603	Yageo	CC0603MRX7R9BB104	Yes	
C32	1	Capacitor	1.5 nF		16 V	0603	Yageo	CC0201KRX7R7BB152	Yes	
C15, C16, C28, C103	4	Capacitor	10 nF		16 V	0603	Yageo	CC0201KRX7R7BB103	Yes	
C25	1	Capacitor	330 nF	5%	16 V	0603	Yageo	CC0603KRX7R7BB334	Yes	
C99, C100, C101	3	Capacitor	1 nF		16 V	0603	Yageo	CC0603KRX7R7BB102	Yes	
C14	1	Capacitor	22 nF	5%	16 V	0603	Yageo	CC0603KRX7R7BB223	Yes	
C11	1	Capacitor	330 pF		16 V	0603	Yageo	CC0201KRX7R7BB331	Yes	
C24	1	Capacitor	390 pF	5%	50 V	0603	Yageo	CC0603GRNPO9BN391	Yes	2%
C41	1	Capacitor	12 nF	5%	25 V	0603	Yageo	CC0603KRX7R8BB123	Yes	
C29	1	Capacitor	47 nF		16 V	0603	Yageo	CC0603KPX7R7BB473	Yes	
C23, C33	2	Capacitor	Open	-	-	-	-	-	Yes	
L1	1	Inductor	1.5 μ H		-	-	Coilcraft	DS3316P-152MLB	No	
L3	1	Inductor	680 μ H		-	-	Coilcraft	DO1606CT-684	No	
L2	1	Inductor	0.5 μ H		30 A	-	Payton	56846	No	Planar
R19	1	Resistor	1 M Ω	5%	200 V	1206	Yageo	RV1206FR-071ML	Yes	
R6	1	Resistor	10 Ω	5%	150 V	805	Yageo	RC0805FR-7W10RL	Yes	
R47	1	Resistor	130 Ω	5%	150 V	805	Yageo	RC0805FR-7W130RL	Yes	
R39, R40, RR100, R101	4	Resistor	2.2 Ω	5%	150 V	805	Yageo	RC0805FR-072R2L	Yes	
R32	1	Resistor	7.5 Ω	1%	150 V	805	Yageo	RC0805FR-077R5L	Yes	
R15	1	Resistor	0 Ω	5%	50 V	603	Yageo	AC0603JR-070RL	Yes	0- Ω res.
R23A, R23B, R29A, R29B	4	Resistor	2.2 Ω	5%	50 V	603	Yageo	RC0603FR-072R2L	Yes	
R2, R27, R45	3	Resistor	10 Ω	5%	50 V	603	Yageo	RC0603FR-0710RL	Yes	
R12	1	Resistor	12 Ω	1%	50 V	603	Yageo	RC0603FR-0712RL	Yes	
R20	1	Resistor	82 Ω	1%	50 V	603	Yageo	RC0603FR-0782RL	Yes	
R10	1	Resistor	100 Ω	5%	50 V	603	Yageo	RC0603FR-07100RL	Yes	
R21	1	Resistor	162 Ω	1%	50 V	603	Yageo	RC0603FR-07162RL	Yes	
R26, R36	2	Resistor	270 Ω	5%	50 V	603	Yageo	RC0603FR-07270RL	Yes	
R11, R34	2	Resistor	499 Ω	1%	50 V	603	Yageo	RC0603FR-07499RL	Yes	
R28	1	Resistor	910 Ω	1%	50 V	603	Yageo	RC0603FR-13910RL	Yes	
R9, R22	2	Resistor	1 k Ω	5%	50 V	603	Yageo	RC0603FR-071KL	Yes	
R30	1	Resistor	1.5 k Ω	1%	50 V	603	Yageo	RC0603FR-071K5L	Yes	
R4	1	Resistor	2 k Ω	1%	50 V	603	Yageo	RC0603FR-072KL	Yes	

AND9173/D

Table 1. BILL OF MATERIALS (continued)

Designator	Qty.	Description	Value	Tolerance	Rating	Footprint	Manufacturer	Part Number	Substitution Allowed	Comments
R7, R16-18, R33, R24A, R24B, R25A, R25B	9	Resistor	10 kΩ	5%	50 V	603	Yageo	RC0603FR-0710KL	Yes	
R13	1	Resistor	12 kΩ	5%	50 V	603	Yageo	RC0603FR-0712KL	Yes	
R5	1	Resistor	13 kΩ	1%	50 V	603	Yageo	RC0603FR-0713KL	Yes	
R31	1	Resistor	19.6 kΩ	1%	50 V	603	Yageo	RC0603FR-0719K6L	Yes	
R14	1	Resistor	22 kΩ	5%	50 V	603	Yageo	RC0603FR-0722KL	Yes	
R1	1	Resistor	51 kΩ	1%	100 V	603	Yageo	RV0603FR-0751KL	Yes	
R8	1	Resistor	66.5 kΩ	1%	50 V	603	Yageo	RC0603FR-0766K5L	Yes	
R3	1	Resistor	75 kΩ	1%	100 V	603	Yageo	RV0603FR-0775KL	Yes	
R35	1	Resistor	Open	-	-	-	-	-	Yes	
R46	1	Resistor	33 kΩ NTC		-	603	AVX	NB 21 M 0 0333	33 k @25°C	Thermistor
LED1	1	LED	Red LED		-	LED0805	ROHM	TLMS1000GS08	No	SMD Type
Q1	1	MOSFET	FDMS2572		150 V	CASE488AA	Fairchild	FDMS2572	No	Flat Lead
Q3-Q6	1	MOSFET	NTMFS4982		30 V	CASE488AA	ON Semiconductor	NTMFS4982NFT1G	No	Flat Lead
Q2	1	MOSFET	IRF6217		150 V	SO8	International Rectifier	IRF6217TRPBF	No	P-channel
Q7	1	Bipolar	MMBT2222			SOT23	ON Semiconductor	MMBT2222ALT1	No	NPN
D1	1	Zener Diode	MMSZ4689			SOD-123	ON Semiconductor	MMSZ4689T1G	No	
D2	1	Diode	BAV23CL			SOD-123	ON Semiconductor	BAV23CLT1G	No	
D4, D8, D9	3	Diode	MMSD914			SOD-123	ON Semiconductor	MMSD914	No	
D3, D6	2	Diode	MBR130T1G			SOD-123	ON Semiconductor	MBR130T1G	No	
J1, J2, J3, J5, J6, J7	6	Pin	PLOT 1 mm			3104_LOPOWER	MILL-MAX	3104-1-00-80-00-00-08-0	No	
J4, J8	2	Pin (Power)	PLOT 2 mm		15 A	3231_POWER	MILL-MAX	3231-2-00-01-00-00-08-0	No	
JP1	1	Jumper	TMM102-0X-X-S-SM			JUMP TMM-SM	Samtec	TMM102-01-L-S-SM	No	
JP1	1	Jumper					Harwin	M22-1920005	No	
T1	1	Transformer	500 μH		30 A	-	Payton	56847	No	
T2	1	Current Sense	CT02-100			-	ICE	CT02		
U1	1	Controller	NCP1565			QFN24	ON Semiconductor	NCP1565		
U2	1	Optocoupler	PS2801			SMD	NEC	PS2801		
U3	1	IC	TL431			SOT23	TI	TL431ACDBZT		
U4	1	Op Amp	LM8261M5			TSOP-5	TI	LM8261M5		
U5	1	Reference	LM4041-1.2			SOT23	TI	LM4041DIM3-1.2		

NOTE: All devices are Pb-Free

ON Semiconductor and the  are registered trademarks of Semiconductor Components Industries, LLC (SCILLC) or its subsidiaries in the United States and/or other countries. SCILLC owns the rights to a number of patents, trademarks, copyrights, trade secrets, and other intellectual property. A listing of SCILLC's product/patent coverage may be accessed at www.onsemi.com/site/pdf/Patent-Marking.pdf. SCILLC reserves the right to make changes without further notice to any products herein. SCILLC makes no warranty, representation or guarantee regarding the suitability of its products for any particular purpose, nor does SCILLC assume any liability arising out of the application or use of any product or circuit, and specifically disclaims any and all liability, including without limitation special, consequential or incidental damages. "Typical" parameters which may be provided in SCILLC data sheets and/or specifications can and do vary in different applications and actual performance may vary over time. All operating parameters, including "Typicals" must be validated for each customer application by customer's technical experts. SCILLC does not convey any license under its patent rights nor the rights of others. SCILLC products are not designed, intended, or authorized for use as components in systems intended for surgical implant into the body, or other applications intended to support or sustain life, or for any other application in which the failure of the SCILLC product could create a situation where personal injury or death may occur. Should Buyer purchase or use SCILLC products for any such unintended or unauthorized application, Buyer shall indemnify and hold SCILLC and its officers, employees, subsidiaries, affiliates, and distributors harmless against all claims, costs, damages, and expenses, and reasonable attorney fees arising out of, directly or indirectly, any claim of personal injury or death associated with such unintended or unauthorized use, even if such claim alleges that SCILLC was negligent regarding the design or manufacture of the part. SCILLC is an Equal Opportunity/Affirmative Action Employer. This literature is subject to all applicable copyright laws and is not for resale in any manner.

PUBLICATION ORDERING INFORMATION

LITERATURE FULFILLMENT:

Literature Distribution Center for ON Semiconductor
P.O. Box 5163, Denver, Colorado 80217 USA
Phone: 303-675-2175 or 800-344-3860 Toll Free USA/Canada
Fax: 303-675-2176 or 800-344-3867 Toll Free USA/Canada
Email: orderlit@onsemi.com

N. American Technical Support: 800-282-9855 Toll Free
USA/Canada
Europe, Middle East and Africa Technical Support:
Phone: 421 33 790 2910
Japan Customer Focus Center
Phone: 81-3-5817-1050

ON Semiconductor Website: www.onsemi.com

Order Literature: <http://www.onsemi.com/orderlit>

For additional information, please contact your local
Sales Representative