

Corporate Profile

BRD8060/D
Rev. 20, Feb-2024



Pushing innovation to create intelligent
power and sensing technologies that solve
the most challenging customer problems.

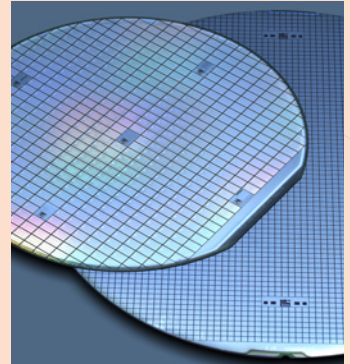
onsemiTM

[onsemi.com](https://www.onsemi.com)



Delivering Energy Efficient Innovations

onsemi (Nasdaq: [ON](#)) is driving disruptive innovations to help build a better future. With a focus on automotive and industrial end-markets, the company is accelerating change in megatrends such as vehicle electrification and safety, sustainable energy grids, industrial automation, and 5G and cloud infrastructure. With a highly differentiated and innovative product portfolio, **onsemi** creates intelligent power and sensing technologies that solve the world's most complex challenges and leads the way in creating a safer, cleaner and smarter world.



Helping Customers Solve their Most Difficult Design Challenges

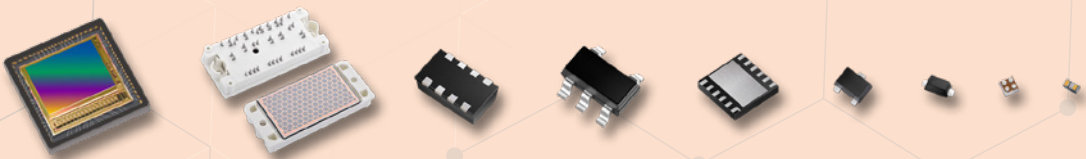
onsemi works closely and collaboratively with its customers to solve their unique design challenges using innovative technologies, applications expertise and market leading products to enable compelling systems solutions. The company operates a global network of systems engineering centers, on-site customer joint engineering labs and applications-focused design and test labs, all supported by global teams of engineers working to meet the needs of an expanding customer base.

Empowering Design Engineers to Reduce Global Energy Use

onsemi has established itself as a market leader in high-efficiency power solutions for automotive, industrial and 5G and cloud infrastructure. By working closely with associations, industry standards organizations and government entities such as ENERGY STAR®, the China National Institute of Standardization and the European Energy Using Products Directive, **onsemi** continues to demonstrate its commitment to the development of innovative energy-efficient solutions to support its focus markets. To help reduce new product development costs, speed time to market for its customers and support the design of energy-efficient electronics, **onsemi** provides online Power Supply WebDesigner™ tools and reference design kits for a range of applications that meet or exceed global energy efficiency standards. The company offers innovative products that enable efficient power supplies through improved power factor, enhanced active-mode efficiency and reduced standby-mode power consumption.

Operating a Responsive, Reliable, World-Class Supply Chain and Quality Program

onsemi operates a flexible, reliable and responsive supply chain that supports our global customer base. During 2023, the company shipped almost 50 billion units through its global logistics network. The company's approximately 31,000* employees around the world actively collaborate with customers, distribution partners and vendors to develop more efficient ways of doing business.



* As of Jan 30, 2024

Market and Application Focus

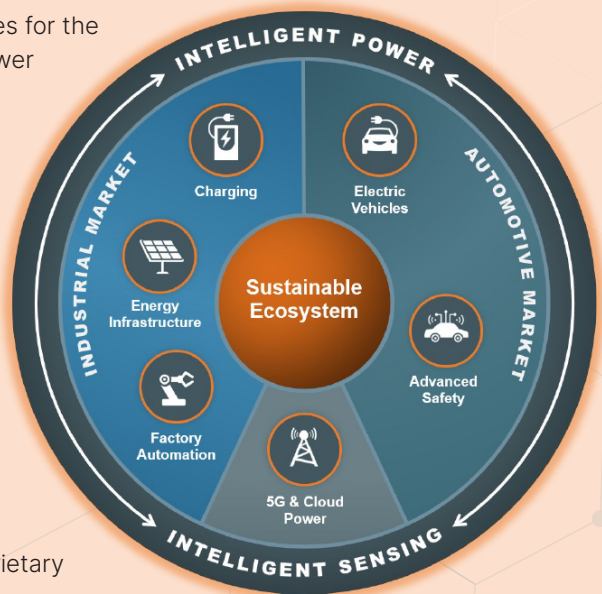
We add intelligence through integration to create value-based solutions.

We drive disruptive technologies to empower a strong sustainable ecosystem.

INTELLIGENT POWER SOLUTIONS

Our intelligent power solutions enable customers to exceed range targets with lower weight, and reduce system cost through unparalleled efficiency

- Propelling the sustainable energy evolution in industrial market with our intelligent power technologies for the highest efficiency solar strings, industrial power and storage systems
- Powering the electrification of the Automotive industry with our intelligent power technologies that allow for lighter and longer-range electric vehicles and enable efficient fast-charging systems
- High efficiency intelligent power solutions to optimize power consumption in the cloud and telecom infrastructure



INTELLIGENT SENSING SOLUTIONS

Our intelligent sensing solutions offer the proprietary features customers require to meet their most demanding use cases

- Enabling Industry 4.0 with our intelligent sensing technologies for smarter factories, buildings and homes
- Enhancing the Automotive mobility experience with our intelligent sensing technologies with imaging and depth sensing that make advanced vehicle safety and automated driving systems possible

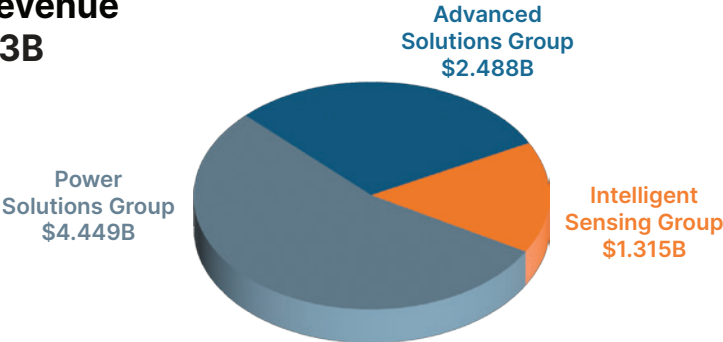
onsemi's Intelligent Power and Sensing solutions give customers the power of the "AND" while delivering the most advanced features to achieve optimal results

Demonstrated Financial Strength

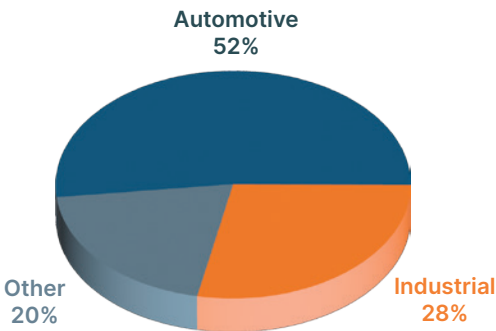
onsemi demonstrates financial strength and efficiency through strong cash flow, a stable revenue stream, and balanced geographic and end-market exposure.

Business Groups

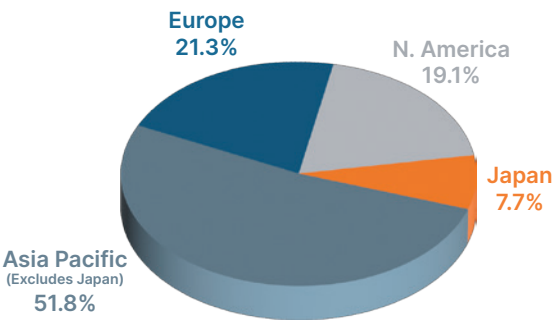
2023 Total Revenue
of \$8.253B



Markets



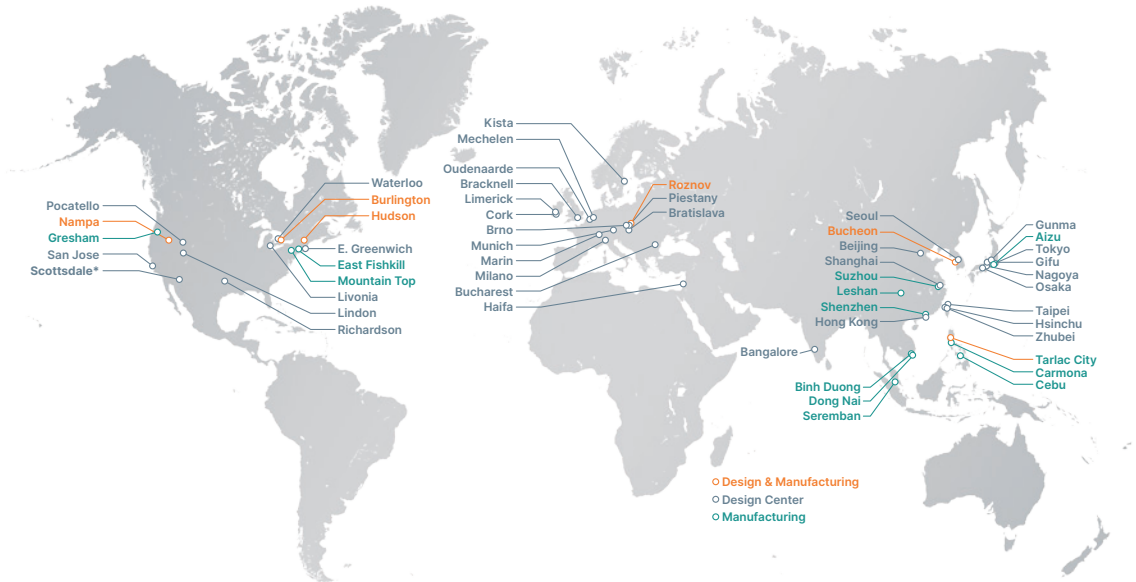
Geography



Represents combined financials as reported for the last twelve months ending December 2023 for **onsemi** product revenue.
Amounts may not total due to rounding of individual amounts.



Global Locations



Please visit www.onsemi.com for a complete listing of our global sales offices.

Worldwide Manufacturing Centers

Front-End & Substrate Facilities



Aizu, Japan



Gresham, OR, USA



Czech Republic Fab



Czech Republic Substrates



Bucheon, Korea



Seremban, Malaysia



Hudson, NH, USA



Mountain Top, PA, USA



East Fishkill, NY, USA

Back-End Facilities



Leshan, China



Suzhou, China



Shenzhen, China



Carmona, Philippines



Tarlac, Philippines



Cebu, Philippines



Seremban, Malaysia



Vietnam OSBD



Vietnam OPP/IPM



Nampa, ID, USA



Burlington, Ontario, Canada

Company Culture

At **onsemi**, we have a long-standing commitment to DEI. We recognize that we are strongest when drawing on the diverse experiences, knowledge, cultures and backgrounds of all employees around the world. We are proud to celebrate differences, promote equity and maintain an inclusive workplace for our employees. Our DEI efforts enable and empower us to continue to encourage the creativity and innovation necessary to maintain a competitive advantage in the global marketplace.

We consistently strive toward a more diverse, equitable and inclusive workplace, which benefits our organization and allows us to successfully meet the changing needs of our customers, suppliers, employees and shareholders worldwide.

Social Impact

The work and giving we do today are essential for a better future and together at **onsemi**, we are creating a future we want to live in. At **onsemi**, we have a mission to propel the world forward with intelligent technology and a goal to achieve net-zero emissions by 2040. We understand how we work, how we impact our planet, the environment and how we give back makes a difference to the customers we serve and the communities in which we live. We have a passion to drive change and make the world a better place.

We build trust with stakeholders by empowering people through technology and advancing social impact initiatives. **onsemi's** corporate philanthropy program, Giving Now, drives positivity forward by creating meaningful change for our planet and every community that we live and work in around the globe. The Giving Now program prioritizes giving in three simple ways:

- **Give to Donate** – Match employee giving and support volunteerism for causes they care about most.
- **Give to Educate** – STEAM (Science, Technology, Engineering, Art and Math) education grants to help students in underserved communities achieve their dreams.
- **Give to Help** – Provide local disaster relief and revitalize communities after emergencies.

To further engage employees in our social impact work, **onsemi** also supports employees in their monetary giving efforts, volunteerism time, or a combination of the two by matching donations up to \$2k (USD; or country equivalent) per year, per person, to qualified organizations.

Our performance and third-party recognition is a testament to our commitment to corporate citizenship, environmental sustainability, supplier responsibility, diversity and inclusion, and social impact and includes the following recognition:



Ethics and Compliance

onsemi's ethics and compliance program is designed to assist us in preventing, detecting, and responding to unethical or illegal conduct, and promote an organizational culture of integrity, accountability and compliance with the law. To do this, ethics and compliance are integrated into every level of our company from the Board of Directors and CEO to individual employees across the globe.

As a company, we do not tolerate retaliation of any kind against any person who, in good faith, reports known or suspected improper activities pursuant to our Code of Business Conduct or assists with an ensuing investigation.

onsemi provides employees, contractors and third parties with access to several reporting channels including a helpline (managed by a third party and available 24x7 with translator availability to support locations where we do business); the Business Ethics Liaisons (BELs), comprised of employees of many job functions and grade levels who serve as a trusted resource for employees; members of the ethics and compliance team; the chief compliance officer and the senior director of ethics and compliance. Further, unless restricted by local law, employees, contractors and third parties may report to the helpline anonymously.

As a full member of the Responsible Business Alliance (the "RBA"), the world's largest industry coalition of leading companies committed to improve social, ethical and social responsibility in global supply chains, **onsemi**, in addition to the guiding principles set forth in our own Code of Business Conduct, adheres to a set of tenets and industry standards ensuring that working conditions are safe, workers are treated with respect and dignity and business operations are environmentally sound and conducted ethically. Furthermore, our Human Rights Policy formalizes our commitment to preserving and promoting the fundamental rights of others, as reflected in the RBA Code of Conduct, the Universal Declaration of Human Rights, the United Nations (UN) Guiding Principles on Business and Human Rights, and the UN Global Compact, to which **onsemi** is a signatory. Our fundamental human rights, as outlined in the UN Global Compact and our Human Rights Policy, applies to all our employees, joint ventures, major suppliers, and select service providers and contractors, and to all of our products and services.

Environmental Sustainability

onsemi has committed to applying its research and design expertise and adapting its own operations to achieve net-zero emissions by 2040. Our approach to net zero emissions is characterized by plans to capitalize on efficiencies that will reduce overall emissions, transition to renewable energy for emissions from electricity, invest in certified carbon off-sets for emissions from non-electricity, and engaging our supply chain partners to achieve reduction of value chain emissions. The company continues to monitor its water consumption and waste generated from operations and seeks to implement solutions that achieve reductions in both areas. In 2023, **onsemi**'s total waste diversion rate was 70% and water recycling rate in its manufacturing operations was 43%.

The vast majority of the company's product portfolio has been converted to meet industry Restriction of Hazardous Substances (RoHS) standards.

onsemi maintains key memberships in:

- Carbon Disclosure Project (CDP)
- Semiconductor Climate Consortium (SCC), Founding Member
- ESG and CSR Board, Founding Member

Sales and Design Assistance

Worldwide Technical Support
www.onsemi.com/support

For a comprehensive listing of
onsemi Sales Offices, Distributors
and Rep Firms, please visit:

Americas & EMEA: www.onsemi.com/sales
China: www.onsemi.cn/sales
Japan: www.onsemi.jp/sales



Intelligent Technology. Better Future.

Join us: www.onsemi.com/careers



onsemi, onSEMI, and other names, marks, and brands are registered and/or common law trademarks of Semiconductor Components Industries, LLC dba "onsemi" or its affiliates and/or subsidiaries in the United States and/or other countries. onsemi owns the rights to a number of patents, trademarks, copyrights, trade secrets, and other intellectual property. A listing of onsemi's product/patent coverage may be accessed at www.onsemi.com/site/pdf/Patent-Marking.pdf. onsemi reserves the right to make changes at any time to any products or information herein, without notice. The information herein is provided "as-is" and onsemi makes no warranty, representation or guarantee regarding the accuracy of the information, product features, availability, functionality, or suitability of its products for any particular purpose, nor does onsemi assume any liability arising out of the application or use of any product or circuit, and specifically disclaims any and all liability, including without limitation special, consequential or incidental damages. Buyer is responsible for its products and applications using onsemi products, including compliance with all laws, regulations and safety requirements or standards, regardless of any support or applications information provided by onsemi. "Typical" parameters which may be provided in onsemi data sheets and/or specifications can and do vary in different applications and actual performance may vary over time. All operating parameters, including "Typicals" must be validated for each customer application by customer's technical experts. onsemi does not convey any license under any of its intellectual property rights nor the rights of others. onsemi products are not designed, intended, or authorized for use as a critical component in life support systems or any FDA Class 3 medical devices or medical devices with a same or similar classification in a foreign jurisdiction or any devices intended for implantation in the human body. Should Buyer purchase or use onsemi products for any such unintended or unauthorized application, Buyer shall indemnify and hold onsemi and its officers, employees, subsidiaries, affiliates, and distributors harmless against all claims, costs, damages, and expenses, and reasonable attorney fees arising out of, directly or indirectly, any claim of personal injury or death associated with such unintended or unauthorized use, even if such claim alleges that onsemi was negligent regarding the design or manufacture of the part. onsemi is an Equal Opportunity/Affirmative Action Employer. This literature is subject to all applicable copyright laws and is not for resale in any manner.

ADDITIONAL INFORMATION

TECHNICAL PUBLICATIONS

Technical Library: www.onsemi.com/design/resources/technical-documentation
onsemi Website: www.onsemi.com

ONLINE SUPPORT: www.onsemi.com/support

For additional information, please contact your local Sales Representative at www.onsemi.com/support/sales