



ON Semiconductor®

FW389_Nch

SPICE PARAMETER

Nch MOS FET

model : BSIM3V3.2

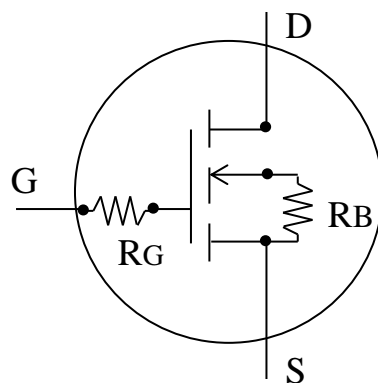
Parameter	Value	Parameter	Value	Parameter	Value
LEVEL	8				
VERSION	3.2	TNOM	27	TOX	7.0E-08
VTH0	2.28	K1	3.86	K2	-0.04
NLX	4.70E-07	DVT0	3.12	DVT1	0.09
DVT2	-0.01	U0	620	UA	7.90E-09
UB	1.00E-21	VSAT	1.75E+05	A0	0
AGS	1	A1	0	A2	1
RDSW	4.60E+04	PRWG	-1.00E-03	WR	0.92
WINT	0	LINT	1.70E-07	VOFF	-0.15
NFACTOR	0.3	CIT	0	CDSC	2.40E-04
CDSCD	0	ETA0	0	DSUB	0.96
PCLM	0.7	PDIBLC1	0	PDIBLC2	1.00E-05
DROUT	0.96	PSCBE1	6.50E+09	PSCBE2	1.58E-05
PVAG	0.01	DELTA	0.06	NGATE	1.00E+19
MOBMOD	1	NQSMOD	0	NOIMOD	1
CAPMOD	3	XPART	0.5	CGSO	3.00E-10
CGDO	1.00E-12	CGBO	0	CGSL	0
CGDL	2.00E-10	CKAPPA	1	CF	0
CLC	3.00E-09	CLE	0.8	DWC	0
DLC	-3.00E-10	NOFF	3.66	VOFFCV	-0.4
ACDE	1	MOIN	15	CJ	1.90E-04
MJ	0.56	PB	0.5	JS	8.00E-07
NJ	1.05	XTI	3	IJTH	0
KT1	-1	UTE	-1.5	PRT	1.22E+05
AT	3.30E+04				

Temp = 27 deg
 L = 1.0E-6 m
 W = 926898E-6 m
 AD = 926898E-12 m²
 RG = 5 ohm
 RB = 0.014 ohm

Date : 2012/12/11

*Information herein is for example only ;
 It is not guaranteed for volume production.

ON Semiconductor





ON Semiconductor®

FW389_Pch

SPICE PARAMETER

Pch MOS FET

model : BSIM3V3.2

Parameter	Value	Parameter	Value	Parameter	Value
LEVEL	8				
VERSION	3.2	TNOM	27	TOX	7.0E-08
VTH0	-2.26	K1	3.12	K2	-0.04
NLX	1.70E-07	DVT0	1.12	DVT1	0.38
DVT2	-0.01	U0	230	UA	8.00E-10
UB	1.00E-21	VSAT	1.25E+05	A0	0
AGS	1	A1	0	A2	1
RDSW	9.30E+06	PRWG	-2.00E-03	WR	1.22
WINT	0	LINT	1.30E-07	VOFF	-0.13
NFACTOR	0.58	CIT	0	CDSC	2.40E-04
CDSCD	0	ETA0	0	DSUB	0.96
PCLM	2.1	PDIBLC1	0	PDIBLC2	1.00E-05
DROUT	0.96	PSCBE1	7.60E+09	PSCBE2	1.10E-04
PVAG	0.01	DELTA	0.024	NGATE	1.00E+19
MOBMOD	1	NQSMOD	0	NOIMOD	1
CAPMOD	3	XPART	0.5	CGSO	1.00E-10
CGDO	7.50E-12	CGBO	0	CGSL	0
CGDL	9.00E-11	CKAPPA	0.6	CF	0
CLC	3.00E-09	CLE	0.8	DWC	0
DLC	-1.00E-10	NOFF	3.66	VOFFCV	-0.4
ACDE	1	MOIN	15	CJ	1.00E-04
MJ	0.56	PB	0.54	JS	7.00E-07
NJ	1.05	XTI	3	IJTH	0
KT1	-0.75	UTE	-0.2	PRT	2.40E+07
AT	3.30E+04				

Temp = 27 deg
 L = 1.0E-6 m
 W = 1892222E-6 m
 AD = 1892222E-12 m²
 RG = 2 ohm
 RB = 0.015 ohm

Date : 2012/12/19

*Information herein is for example only ;
 It is not guaranteed for volume production.

ON Semiconductor

