



ON Semiconductor®

FW4604_Nch

SPICE PARAMETER

Nch MOS FET

model : BSIM3V3.2

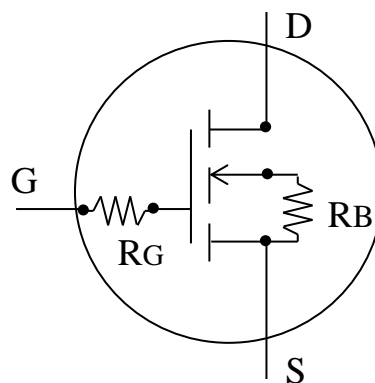
Parameter	Value	Parameter	Value	Parameter	Value
LEVEL	8				
VERSION	3.2	TNOM	27	TOX	7.0E-08
VTH0	2.34	K1	3.86	K2	-0.04
NLX	4.70E-07	DVT0	3.12	DVT1	0.09
DVT2	-0.01	U0	620	UA	7.90E-09
UB	1.00E-21	VSAT	1.75E+05	A0	2
AGS	0.56	A1	0	A2	1
RDSW	5.20E+03	PRWG	8.00E-03	WR	0.92
WINT	0	LINT	-9.00E-08	VOFF	-0.15
NFACTOR	0.48	CIT	0	CDSC	2.40E-04
CDSCD	0	ETA0	0	DSUB	0.96
PCLM	0.2	PDIBLC1	0	PDIBLC2	1.00E-05
DROUT	0.96	PSCBE1	1.10E+09	PSCBE2	6.61E-07
PVAG	0.01	DELTA	0.06	NGATE	1.00E+19
MOBMOD	1	NQSMOD	0	NOIMOD	1
CAPMOD	3	XPART	0.5	CGSO	1.00E-11
CGDO	1.45E-11	CGBO	0	CGSL	0
CGDL	1.40E-10	CKAPPA	1.5	CF	0
CLC	3.00E-09	CLE	0.8	DWC	0
DLC	-1.00E-12	NOFF	3.66	VOFFCV	-0.4
ACDE	1	MOIN	15	CJ	1.50E-04
MJ	0.49	PB	0.7	JS	5.00E-07
NJ	1.05	XTI	3	IJTH	0
KT1	-1.1	UTE	-1.7	PRT	8.00E+03
AT	3.30E+04				

Temp = 27 deg
 L = 1.0E-6 m
 W = 1040544E-6 m
 AD = 1040544E-12 m²
 RG = 25 ohm
 RB = 0.01 ohm

Date : 2011/12/01

*Information herein is for example only ;
 It is not guaranteed for volume production.

ON Semiconductor





ON Semiconductor®

FW4604_Pch

SPICE PARAMETER

Pch MOS FET

model : BSIM3V3.2

Parameter	Value	Parameter	Value	Parameter	Value
LEVEL	8				
VERSION	3.2	TNOM	27	TOX	6.0E-08
VTH0	-1.98	K1	3.12	K2	-0.04
NLX	1.70E-07	DVT0	1.12	DVT1	0.38
DVT2	-0.01	U0	230	UA	8.00E-10
UB	1.00E-21	VSAT	1.25E+05	A0	0.36
AGS	0.22	A1	0	A2	1
RDSW	1.02E+06	PRWG	-3.50E-03	WR	1.22
WINT	0	LINT	5.00E-08	VOFF	-0.117
NFACTOR	0.68	CIT	0	CDSC	2.40E-04
CDSCD	0	ETA0	0.52	DSUB	0.96
PCLM	1.7	PDIBLC1	0	PDIBLC2	1.00E-05
DROUT	0.96	PSCBE1	2.00E+09	PSCBE2	4.17E-05
PVAG	0.01	DELTA	0.024	NGATE	1.00E+19
MOBMOD	1	NQSMOD	0	NOIMOD	1
CAPMOD	3	XPART	0.5	CGSO	1.00E-12
CGDO	2.40E-11	CGBO	0	CGSL	0
CGDL	2.00E-10	CKAPPA	2.1	CF	0
CLC	3.00E-09	CLE	0.8	DWC	0
DLC	-1.00E-12	NOFF	3.66	VOFFCV	-0.4
ACDE	1	MOIN	15	CJ	1.20E-04
MJ	0.55	PB	0.7	JS	5.00E-07
NJ	1.05	XTI	3	IJTH	0
KT1	-0.7	UTE	-1	PRT	1.40E+06
AT	3.30E+04				

Temp = 27 deg
 L = 1.0E-6 m
 W = 1040544E-6 m
 AD = 1040544E-12 m²
 RG = 23 ohm
 RB = 0.025 ohm

Date : 2011/12/02

*Information herein is for example only ;
 It is not guaranteed for volume production.

ON Semiconductor

