

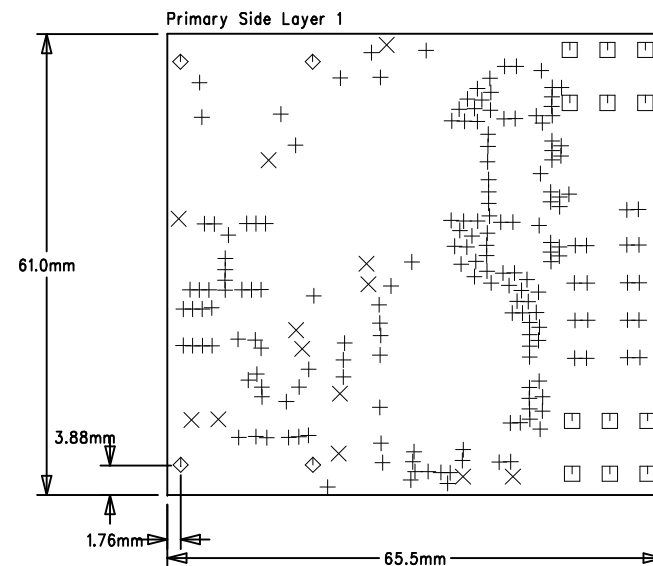
D

C

B

A

FABRICATION DRAWING



SIZE	QTY	SYM	PLATED	TOL
0.508	183	+	YES	+/-0.0
1	13	×	YES	+/-0.0
1.9	12	□	YES	+/-0.0
1.6	4	◇	YES	+/-0.0

REVISION RECORD			
LTR	ECO NO:	APPROVED:	DATE:

MATERIAL	FR4 IMPROVED (low CTE)		
BOARD THICKNESS		1.6mm /63mils	
STACKUP	MC4 /4LAYERS		
MINIMAL GAP		203um /8.0mils	
MINIMAL SLIVER		203um /8.0mils	
COPPER THICKNESS		35um(1oz)at START	
FINISH THICKNESS		CHEMICAL NiAu	
SOLDER MASK		GREEN TOP&BOT	
SILKSCREEN	WHITE TOP&BOT		
ALL BOARD ELECTRICALLY TESTED			
MANUFACTURE 'S LOGO & DATECODE MARKED ON BOTTOM SOLDERMASK			

REFERENCE DOCUMENT NCP1562_FABNOTES.PDF
FOR COMPLETE FABRICATION DRAWING NOTES

DRAWN: DYPE-Tech	DATED: w21/2017
CHECKED: C. BASSO	DATED: w21/2017
QUALITY CONTROL: QC By	DATED: QC Date
RELEASED: Released By	DATED: Release Date

COMPANY:				ON Semiconductor			
TITLE:				NCP1566 100W 3.3V Version 1.0			
CODE:		SIZE:	DRAWING NO:			REV:	
TLS		B	NCP1566			01	
SCALE: 1/1					SHEET: 3 OF 3		