

Test Procedure for the NCP3063 Boost – PDIP-8

ON Semiconductor®



7/31/2006

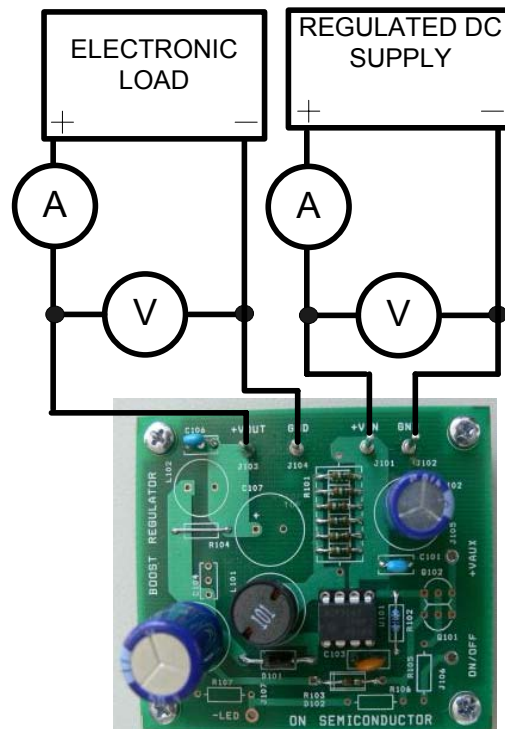


Figure 1: Test Setup

Table 1: Required Equipment

Voltage Supply (12 V, 3 A)	Voltage Meter	Electronic Load or Current Source
----------------------------	---------------	-----------------------------------

Test Procedure:

1. Connect the test setup as shown in Figure 1.
2. Apply an input voltage, $V_{cc} = 12V$
3. Apply $I_{out} = 0mA$ load.
4. Check that V_{out} is 24Vdc (23.9V – 24.1V)
5. Increase I_{out} load to 350mA
6. Check that V_{out} is 24V (23.9V – 24.1V)
7. Power down the load
8. Power down V_{cc}
9. End of test