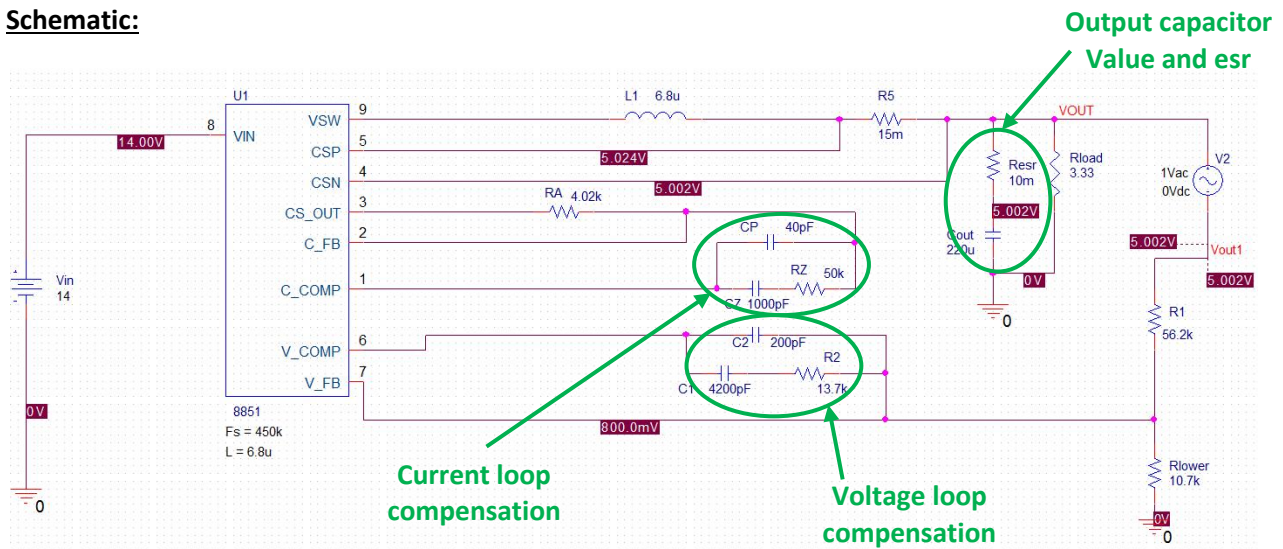




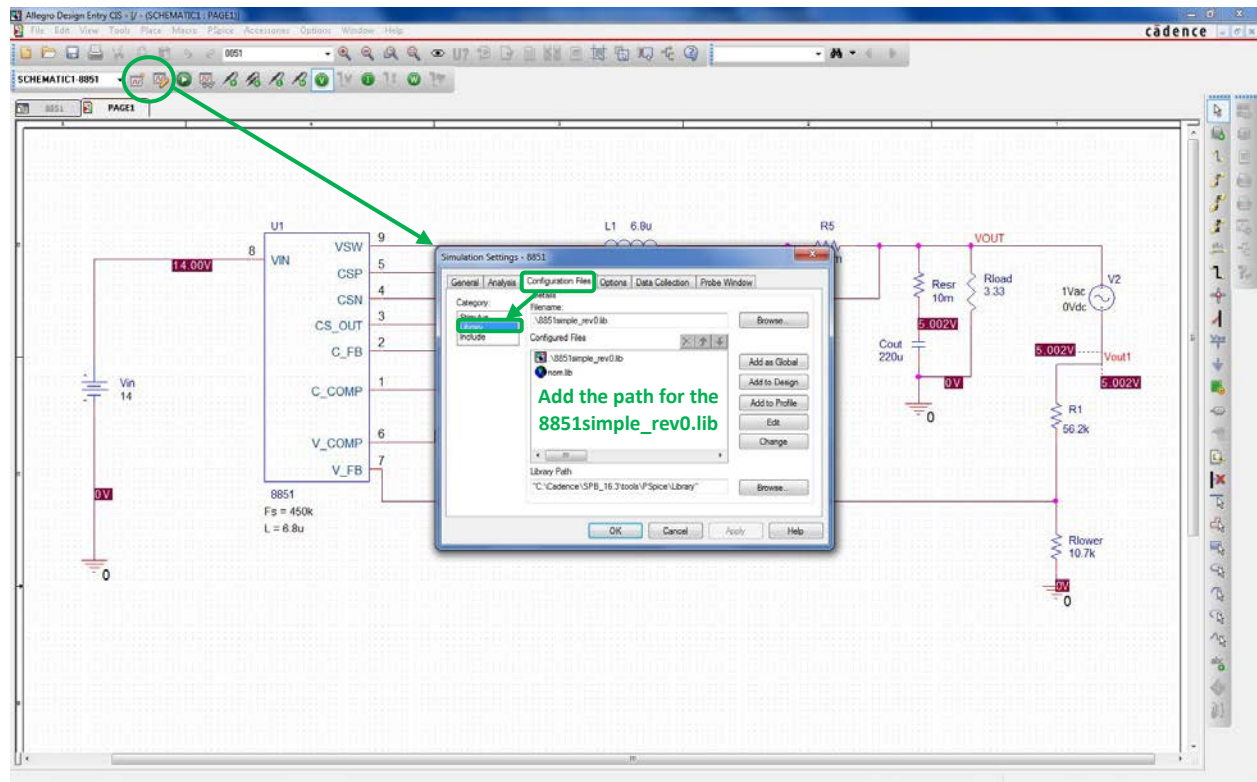
ON Semiconductor®

How to use the NCV8851 PSPICE small-signal simulation model

Schematic:



Include path for library file:



Run the simulation. **Always check that the calculated bias point is correct** (look at output voltage).

Plot results:

Plot : - $\text{DB}(V(\text{Vout}) / V(\text{vout1}))$

- $\text{P}(V(\text{Vout}) / V(\text{vout1}))$

Or use plot template: “Bode Plot dB - separate(V(VOUT)/V(vout1))”

