

BLE-SWITCH001-GEVB

Power supply generation

Revision: Rev 4

Repository revision: Not in version control

Engineer: T. Duris

6. July 2020 20:51

File: BLE-SWITCH001-GEVB\_power\_supply.SchDoc

2/4

Assembly variant:

standard\_board

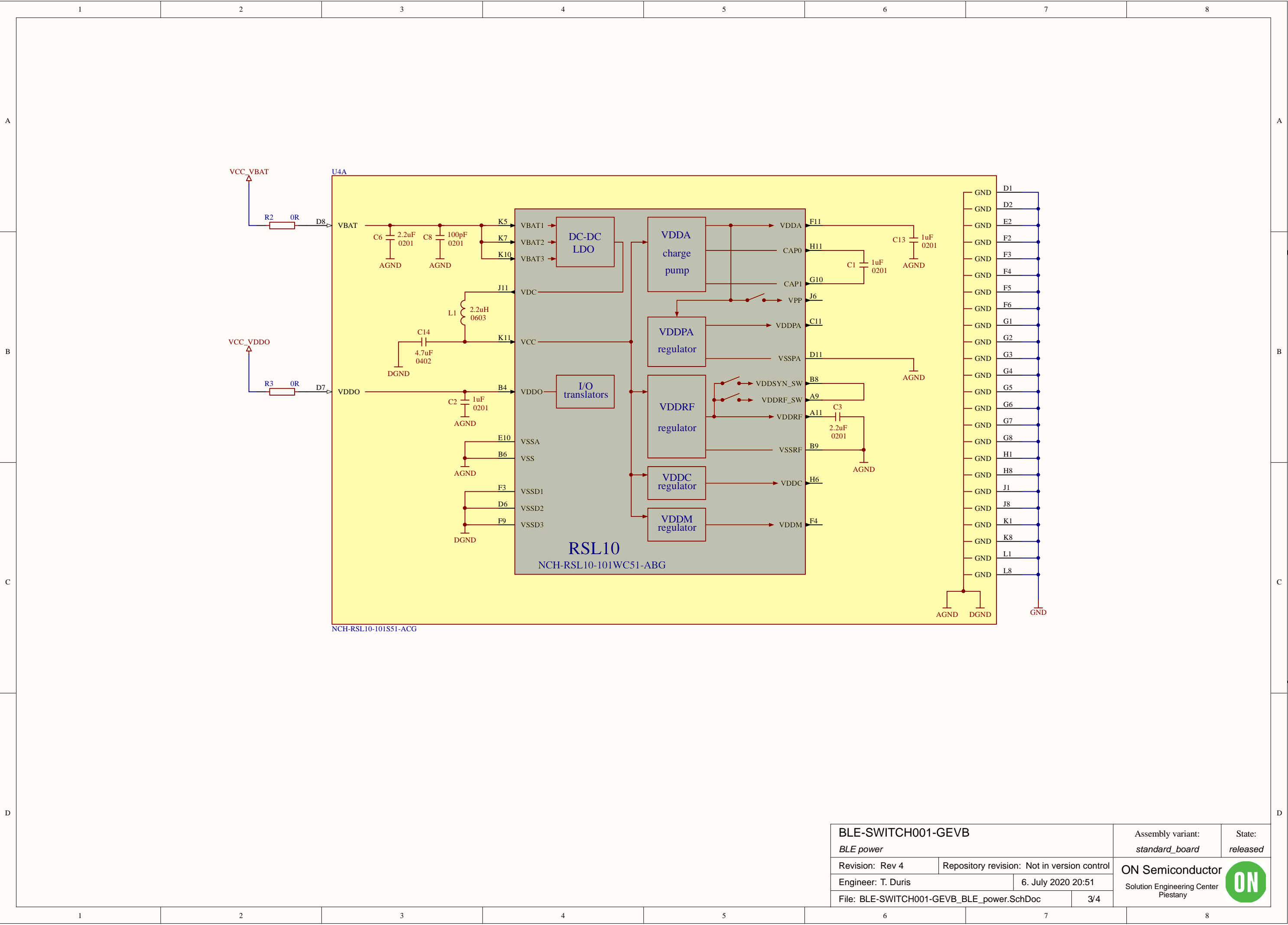
State:

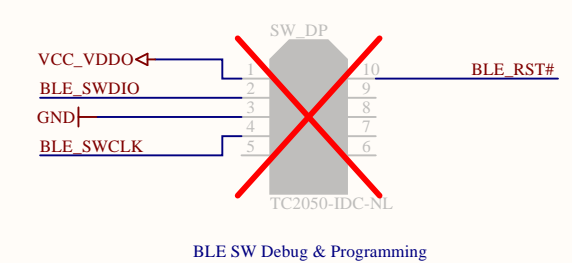
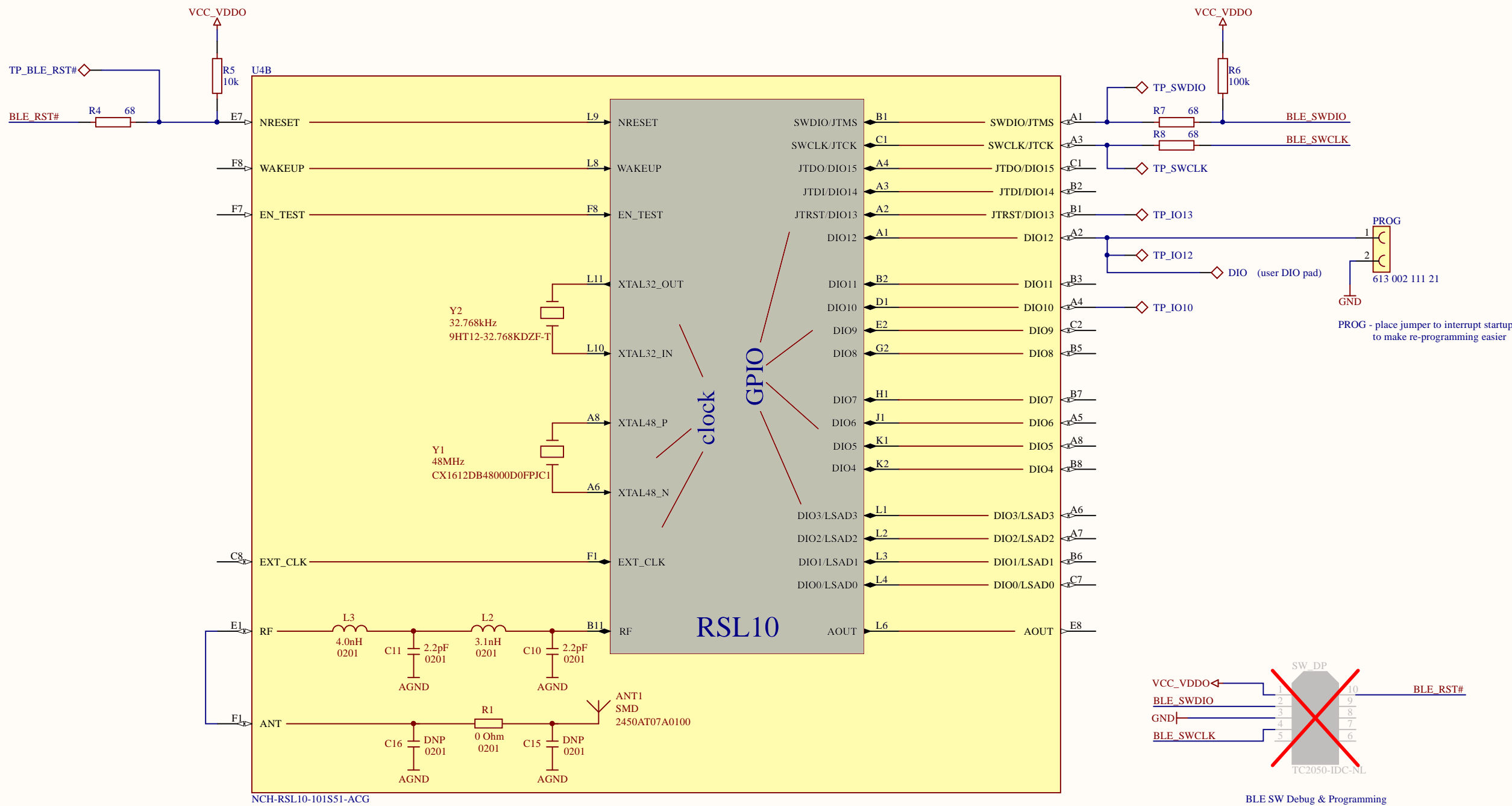
released

ON Semiconductor

Solution Engineering Center  
Piestany







BLE-SWITCH001-GEVB			Assembly variant:	State:
BLE signals			standard_board	released
Revision: Rev 4	Repository revision: Not in version control		ON Semiconductor	
Engineer: T. Duris	6. July 2020 20:51			
File: BLE-SWITCH001-GEVB_BLE_signals.SchDoc	4/4			

