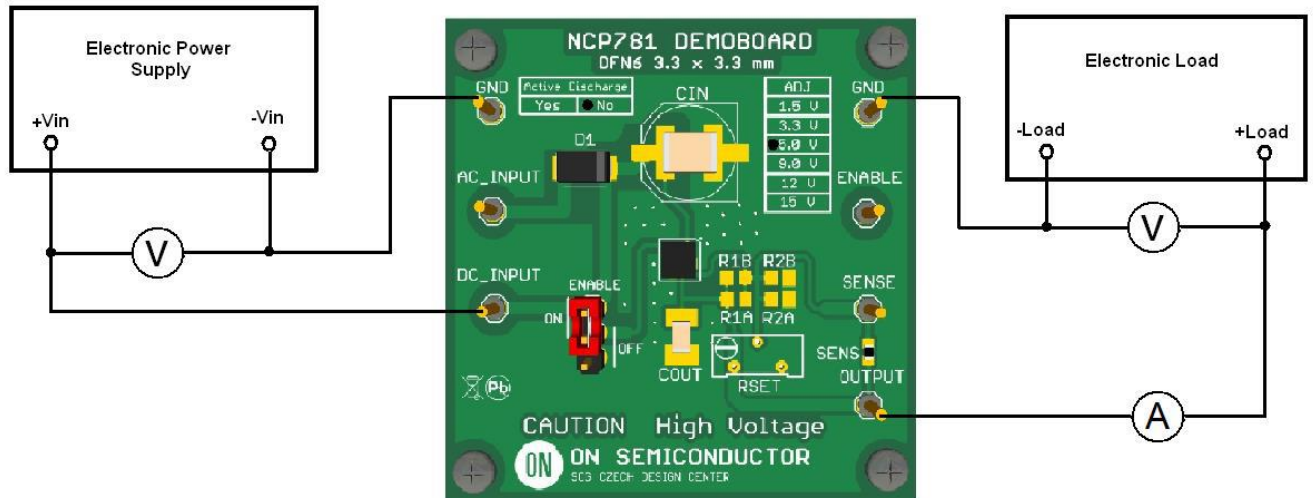




Test Procedure for the NCP781BMN050TAGEVB Evaluation Board



Test procedure:

1. Check the position of jumper and correct it if necessary.
ENABLE - ON
2. Connect the test setup as shown Figure
3. Apply an input voltage **V_{in} = 15 V**
4. Apply **I_{out} = 0mA** load.
5. Check that V_{out} is **V_{out} = 5.0 V**. (Set by Rset trimmer if necessary)
6. Increase the Input Voltage to **V_{in} = 150 V**
7. Check the Output Voltage, V_{out} should be **5.0 V +/- 2.5%**
8. Increase the load up to **I_{out} = 1mA (respect SOA limitation)**
9. Check the Output Voltage, V_{out} should be **5.0 V +/- 2.5%**
10. Decrease the Input Voltage to **V_{in} = 75 V**
11. Increase the load up to **I_{out} = 10mA (respect SOA limitation)**
12. Check the Output Voltage, V_{out} should be **5.0 V +/- 2.5%**
13. Power down the Electronic Load
14. Power down the Electronic Power Supply
15. End of test