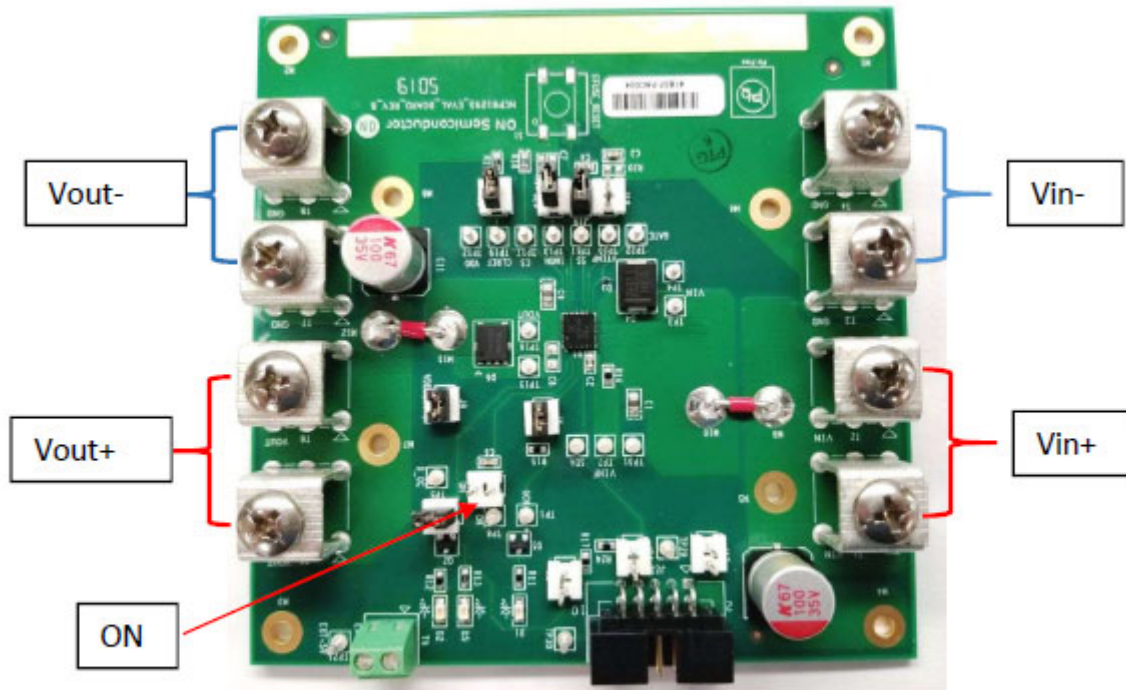




## Test Procedure for the NCP81296GEVB Evaluation Board



(L x W x H) 4" x 4" x 0.063"

### Simple Test Procedure:

1. Make sure the default evaluation board jumper settings are as shown above picture. Attach the positive and negative terminals of the load to the Vout- and Vout+ terminals on demo board, respectively.
2. Preset the power supply output to be 12V, and then turn off the power supply
3. Attach the positive and negative terminals of the external power supply to the Vin- and Vin+ terminals on evaluation board, respectively.
4. Turn on the power supply. Voltage through the output terminals must match Vin and the status LEDs of the board (D1, D2) should light up, indicating normal operation.
5. To use the EN turning ON/OFF function, apply a digital input to the ON header. Drive EN higher than 1.5V to turn ON the NCP81296 or less than 0.8V to turn it OFF.